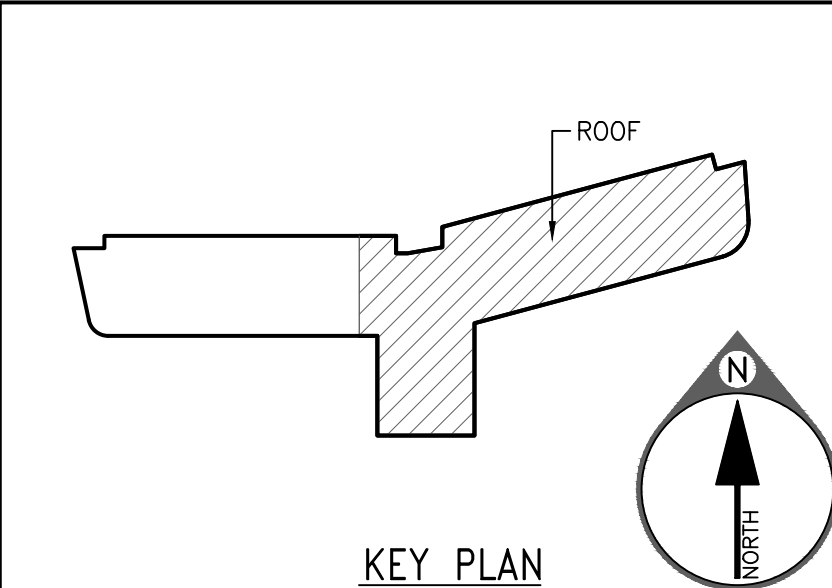


**A5 ENLARGE ROOF PLAN/SAFETY EQUIPMENT LAYOUT @ LVL 9**  
 (REF: A09-104) SCALE: 1/4" = 1'-0"

**A1 COMPOSITE ROOF PLAN/SAFETY EQUIPMENT LAYOUT @ ROOF**  
 (REF: A09-104) SCALE: 1/8" = 1'-0"



**RENTAL POWERED PLATFORMS (REF. ONLY)**

ELECTRICAL POWER OUTLET REQUIREMENTS (SUPPLIED BY OTHERS)	
OUTLET TYPE	WEATHERPROOF POWER OUTLET WITH STRAIN RELIEF EYELET
VOLTAGE	208V
PHASING	SINGLE PHASE
FREQUENCY	60 HZ
AMPERAGE	30A
VOLTAGE DROP	NO MORE THAN 3% DROP IN VOLTAGE AT ANY OUTLET
RECEPTACLE	SAFETY-SHROUD, TWIST-LOCK
RECEPTACLE	HLL2620SW
RECEPTACLE	L6-30R

**NOTE:** POWER OUTLETS MAY BE LOCATED ON GROUND LEVEL / ROOF ON EACH FACE OF THE BUILDING 75 FT. TO 100 FT. APART. PROVIDE 1/2" DIA. STAINLESS STEEL EYE BOLT FOR STRAIN RELIEF ANCHOR AT EACH OUTLET (BY OTHERS)

**GENERAL NOTES:**

- PRO-BEL EQUIPMENT IS DESIGNED TO FEDERAL OSHA: GENERAL INDUSTRY - REGULATION (STANDARDS-29 CFR) UNDER PART 1910: OCCUPATIONAL SAFETY AND HEALTH STANDARDS: -1910 SUBPART D - WALKING WORKING SURFACES-1910.27 -1910.28-DUTY TO HAVE FALL PROTECTION AND FALLING OBJECT PROTECTION. -1910.29-FALL PROTECTION SYSTEMS AND FALLING OBJECT PROTECTION-CRITERIA AND PRACTICES
  - PRO-BEL IS TO BE NOTIFIED OF ALL CHANGES TO AND/OR DEVIATIONS FROM THIS DRAWING.
  - GENERAL CONTRACTOR/ARCHITECT/CONSULTANT/CLIENT TO VERIFY THAT PRO-BEL EQUIPMENT LOCATIONS DO NOT CONFLICT WITH DOWNSHAFTS, ROOF DRAINS, VENT PIPES, MECHANICAL UNITS ETC.
  - THE PORTIONS OF BUILDING STRUCTURE THAT SUPPORT PRO-BEL EQUIPMENT SHALL BE VERIFIED BY THE PROJECT STRUCTURAL ENGINEER/ARCHITECT FOR THE RESULTING FORCES AND MOMENTS DUE TO THE LOADS SHOWN ON PRO-BEL SHOP DRAWINGS(S).
  - REINFORCING OF BUILDING STRUCTURE BY OTHERS AS REQUIRED BY THE PROJECT STRUCTURAL ENGINEER TO RESIST THE LOADS IMPOSED BY PRO-BEL EQUIPMENT. EVERY MAN OR WORKING LEVEL MUST HAVE DIRECT ACCESS TO THE INTERIOR OF THE BUILDING.
  - CLIENT/GENERAL CONTRACTOR TO PROVIDE PAVERS/CONCRETE RUNWAY FOR TRANSPORTATION OF PLATFORMS/DAVITS/OTHER WINDOW WASHING EQUIPMENT AS REQUIRED.
  - FOR GROUND RIGGED APPLICATIONS, CLIENT/GENERAL CONTRACTOR TO ENSURE ACCESS IS AVAILABLE TO TRANSPORT PLATFORMS/DAVITS/OTHER WINDOW WASHING EQUIPMENT (AS REQUIRED) AROUND BUILDING.
  - CLIENT/GENERAL CONTRACTOR TO PROVIDE PAVERS/CONCRETE RUNWAY FOR TRANSPORTATION OF PLATFORMS/DAVITS/OTHER WINDOW WASHING EQUIPMENT AS REQUIRED.
  - FOR GROUND RIGGED APPLICATIONS, CLIENT/GENERAL CONTRACTOR TO ENSURE ACCESS IS AVAILABLE TO TRANSPORT PLATFORMS/DAVITS/OTHER WINDOW WASHING EQUIPMENT (AS REQUIRED) AROUND BUILDING.
  - WEATHERPROOF ELECTRICAL OUTLET 1/4" POWER CORD RESTRAINT ANCHOR AS REQUIRED: BY OTHERS.
  - THE SAFETY ANCHOR HAS BEEN TESTED TO ENSURE THAT FRACTURE OR DETACHMENT DOES NOT OCCUR WITH A 2224 LB (5000 lbs) LOAD.
  - THE WORKING LOAD OF THE SAFETY ANCHORS IS 4.45 kN(1,000lbs).
  - THE FALL ARREST LOAD OF THE HLL ANCHORS IS 2,200 lbs.
  - INSTALLATION OF HORIZONTAL LIFELINES, STATIC LINES AND/OR DOC LINES BETWEEN ANCHORS/DAVITS WITHOUT PRIOR WRITTEN APPROVAL FROM PRO-BEL IS STRICTLY PROHIBITED, AND WILL RESULT IN THE MANUFACTURER'S WARRANTY BECOMING NULL AND VOID AND THE RELEVANT PRODUCT LIABILITY INSURANCE BEING CANCELLED.
  - AREAS FROM WHERE PLATFORM/SINGLE MAN CAGE IS GROUND RIGGED MUST BE FREE OF ANY OBSTRUCTIONS AND LEVELLED (MINIMUM 6'-0" WIDE) BY OTHERS.
  - WEATHERPROOF ELECTRICAL OUTLET 1/4" POWER CORD RESTRAINT ANCHOR AS REQUIRED: BY OTHERS.
  - WEATHERPROOF WATER HOSE BIB AS REQUIRED: BY OTHERS.
  - INTERMEDIATE STABILIZATION ANCHORS/GUIDE TRACKS FOR STABILIZATION OF THE PLATFORM AS REQUIRED: BY OTHERS.
- MATERIAL:**
- ALL STRUCTURAL STEEL IS CONFORMED TO PER AISC SPECIFICATIONS.
  - ALL HOLLOW STRUCTURAL SECTIONS CONFORM TO ASTM A500 OR EQUIVALENT CAN/CSA-G40.20/G40.21.
  - ALL STEEL PLATE AND OTHER SECTIONS CONFORM TO ASTM A36 OR EQUIVALENT CAN/CSA-G40.20/G40.21.
  - STAINLESS STEEL- TYPE 304/316.
  - ALUMINUM SECTIONS-ALLOY 6061-T6; DESIGNED AS PER SPECIFICATIONS FOR ALUMINUM STRUCTURES PUBLISHED BY THE ALUMINUM ASSOCIATION.
- INSTALLATION:**
- EQUIPMENT IS TO BE SUPPLIED BY PRO-BEL AND INSTALLED BY OTHERS.
  - ROOFING IN OF PRO-BEL EQUIPMENT IS TO BE BY OTHERS.
  - CAST-IN BOLTS, CAGES, AND FULLY EMBEDDED EQUIPMENT ARE TO BE SUPPLIED BY PRO-BEL AND INSTALLED BY OTHERS. PRO-BEL IS TO BE NOTIFIED IF THE POSITION OR DETAILS OF THE CAST-IN ITEMS DEVIATE FROM THIS DRAWING.
- INSPECTION:**
- ALL PRO-BEL EQUIPMENT SHOULD BE VISUALLY INSPECTED BEFORE EACH SCHEDULED SERVICE CYCLE AND NOT LESS THAN ONCE A YEAR FOR ANY DAMAGE, DEGRADATION, WEAR, CORROSION OR ANY OTHER VISUAL DEFECT WHICH WOULD COMPROMISE THE INTEGRITY OF THE EQUIPMENT.
  - ANY FALL ARREST ACCIDENT OR INCIDENT (FIRE, LIGHTNING ETC) INVOLVING USE OF PRO-BEL EQUIPMENT OR IN THE NEAR VICINITY OF PRO-BEL EQUIPMENT, SHOULD BE REPORTED TO PRO-BEL, ENABLING PRO-BEL (OR ITS AUTHORIZED REPRESENTATIVE) TO PERFORM A THROUGH INSPECTION.
  - ANY SUSPECTED DAMAGE OR COMPROMISED EQUIPMENT WOULD REQUIRE CORRECTIVE ACTION THAT NEEDS TO BE TAKEN UNDER THE DIRECTION OF PRO-BEL'S PROFESSIONAL ENGINEER OF RECORD.
  - NO ALTERATION OR MODIFICATION OF ANY PRO-BEL EQUIPMENT, ITS CONNECTION OR THE SUPPORTING STRUCTURE IS PERMITTED AS THIS WILL AFFECT THE INTEGRITY / ABILITY OF THE EQUIPMENT TO WITHSTAND THE IMPOSED LOADS. ANY UNAUTHORIZED ALTERATION / MODIFICATION WILL RESULT IN MANUFACTURER'S WARRANTY BECOMING NULL AND VOID AND THE PRODUCT LIABILITY INSURANCE BEING CANCELLED.

- ANY ALTERATION / MODIFICATION OF PRO-BEL'S EQUIPMENT, ITS CONNECTION OR SUPPORTING STRUCTURE SHOULD ONLY BE UNDERTAKEN WITH THE WRITTEN AUTHORIZATION OF PRO-BEL'S PROFESSIONAL ENGINEER OF RECORD.

- TESTING:**
- IT IS RECOMMENDED ALL INITIAL TESTING, AND SUBSEQUENT TESTING FOR RECERTIFICATION, (BASED ON FREQUENCY RECOMMENDED BY PRO-BEL) TO VERIFY THE INTEGRITY OF ALL EQUIPMENT, ITS CONNECTION AND THE SUPPORTING STRUCTURE BE PERFORMED BY PRO-BEL OR ITS AUTHORIZED REPRESENTATIVE. PRO-BEL WILL PROVIDE STAMPED DRAWINGS, TEST REPORTS AND OTHER CERTIFICATIONS BASED ON THESE TESTS AS APPLICABLE.
  - YIELDING OF EQUIPMENT AND / OR SUPPORTING STRUCTURE MAY OCCUR AS A RESULT OF LOAD TESTING WHEN THIS OCCURS, CORRECTIVE ACTION NEEDS TO BE TAKEN BY PRO-BEL FOR ITS EQUIPMENT OR THE BUILDING STRUCTURAL ENGINEER OF RECORD FOR THE SUPPORTING STRUCTURE.
  - IF ANY INITIAL OR SUBSEQUENT TESTING IS PERFORMED BY CLIENT'S REPRESENTATIVE OR ANY THIRD-PARTY CONTRACTOR, THEN THIS THIRD-PARTY ENTITY WOULD BE RESPONSIBLE AND NEED TO PROVIDE STAMPED DRAWINGS, TEST REPORT AND OTHER CERTIFICATION AS APPLICABLE. PRO-BEL'S STAMPED DRAWINGS AND OTHER DOCUMENTS AND ITS MANUFACTURER'S WARRANTY AND PRODUCT LIABILITY INSURANCE WOULD THEN BE CANCELLED AND WOULD BECOME NULL AND VOID.

- USAGES:**
- EQUIPMENT SHOULD NOT BE USED WHEN WIND VELOCITY IS ABOVE 25MPH (40 KM/H) AT GROUND LEVEL.
  - EQUIPMENT SHOULD NOT BE USED DURING ADVERSE WEATHER CONDITIONS THAT WOULD EXPOSE THE OPERATOR OR THE PUBLIC TO ANY INCREASED SAFETY HAZARDS.
  - EQUIPMENT SHOULD BE AT LEAST 10 FT. AWAY FROM HIGH VOLTAGE ELECTRICAL LINES.
  - ALL USERS OF PRO-BEL EQUIPMENT MUST BE PROPERLY TRAINED IN ORDER TO USE THE EQUIPMENT SAFELY. USERS MUST COMPLY WITH ALL APPLICABLE SAFETY CODES AND REGULATIONS WHEN USING THIS SYSTEM.
  - THIS DRAWING MUST BE READ AND USED IN CONJUNCTION WITH THE OPERATING INSTRUCTIONS DESCRIBED IN THE LOG BOOK SUPPLIED BY PRO-BEL.
  - WORKERS MUST HAVE A WORK PLAN PRIOR TO START OF WORK ON THE TOP ROOF AREA AND OTHER AREAS WHERE WINDOW WASHING EQUIPMENT IS TO BE USED AND ALSO DEMONSTRATE HOW TO RIG SAFELY AS PER THE SAFETY REGULATIONS.
  - WORKERS MUST PROTECT LINES FROM CHAFING AT ALL TIMES.
  - PRO-BEL EQUIPMENT SHALL BE RE-CERTIFIED AT PERIODS NOT TO EXCEED 10 YEARS. THE RE-CERTIFICATION RECORD SHALL BE INCLUDED IN THE BUILDING LOGBOOK. IF AN AREA OF SUSPICION IS IDENTIFIED, A TEST PROCEDURE, IF NECESSARY, SHALL BE PERFORMED UNDER THE DIRECTION OF PRO-BEL'S PROFESSIONAL ENGINEER.

- FALL PROTECTION / ARREST NOTES:**
- WORKER MUST BE TIED OFF FOR FALL ARREST PRIOR TO APPROACHING, AND REMAIN CONTINUOUSLY TIED OFF WHEN WORKING WITHIN (6'-0") OF ROOF EDGE WHERE PARAPET HEIGHT IS LESS THAN SAFETY RAILING HEIGHT (42" TALL).
  - WORKERS SHALL ARRANGE THEIR LIFE LINES IN SUCH A WAY TO ENSURE THAT THEY CANNOT FALL MORE THAN (6'-0") VERTICAL FREE FALL OR STRIKE LOWER ROOF LEVELS OR BUILDING WHEN PERFORMING NON-ROUTINE ROOF MAINTENANCE WORK.

- FALL RESTRAINT NOTES:**
- ALL WORKERS MUST SECURE THEMSELVES TO THE HLL LINE USING A LANYARD SHORT ENOUGH TO PREVENT THE PERSON'S CENTER OF GRAVITY FROM REACHING THE FALL HAZARD / EDGE.
  - AUTHORIZED WORKERS ARE PROHIBITED FROM ACCESSING ANY AREA WHERE THEY CANNOT PREVENT THEIR BODY'S CENTER OF GRAVITY FROM REACHING THE FALL HAZARD / EDGE.
  - AUTHORIZED WORKERS SHOULD ENSURE THAT THE LANYARD IS APPROXIMATELY PERPENDICULAR TO THE HLL LINE AT ALL TIMES.
  - HLL SYSTEM CAPACITY - MAXIMUM 4 WORKERS.
  - AUTHORIZED WORKERS MUST USE AN AUXILIARY BYPASS LANYARD TO ALLOW THEMSELVES TO REMAIN CONTINUOUSLY TIED-OFF WHILE BYPASSING AN INTERMEDIATE ANCHOR.
  - WORKERS MUST NOT USE THE HLL LINE TO SECURE PRIMARY RIGGING EQUIPMENT OR FOR DIRECT RIGGING.
  - IF THE SHOCK ABSORBER INDICATES IT HAS BEEN DEPLOYED, A THOROUGH INSPECTION OF PRO-BEL EQUIPMENT AND THE SUPPORTING STRUCTURE IS TO BE CONDUCTED, AND ANY DAMAGED COMPONENT MUST BE REPAIRED OR REPLACED, UNDER THE DIRECTION BY PRO-BEL'S PROFESSIONAL ENGINEER.

- WINDOW CLEANING NOTES:**
- WINDOW CLEANERS (CONTRACTORS) MUST TAKE ADDITIONAL SAFETY MEASURE AND PRECAUTIONS WHILE RIGGING FROM THE BUILDING TO PROTECT THE PUBLIC.
  - BEFORE USING DAVIT ARMS, ALL LOCKS AND PINS MUST BE INSPECTED TO ENSURE THEY ARE IN PLACE, IN GOOD WORKING ORDER, AND PROPERLY ENGAGED.
  - AUTHORIZED WORKERS MUST USE AN AUXILIARY BYPASS LANYARD TO ALLOW THEMSELVES TO REMAIN CONTINUOUSLY TIED-OFF WHILE BYPASSING AN INTERMEDIATE ANCHOR.
  - WORKERS MUST AT ALL TIMES BE TIED OFF TO INDEPENDENT SAFETY ANCHORS WHEN USING A BOSON'S CHAIR, CAGE, OR ANY OTHER MEANS OF SUSPENSION.
  - WORKERS MUST AT ALL TIMES BE TIED OFF TO INDEPENDENT SAFETY ANCHORS WHEN USING A BOSON'S CHAIR, CAGE, OR ANY OTHER MEANS OF SUSPENSION, WHERE 4 POINT SUSPENSION HAS BEEN APPROVED. EACH WORKER'S LANYARD MUST BE SECURED TO THE PLATFORM AS RECOMMENDED BY PRO-BEL.

**LIST OF DRAWING SHEETS**

SHEET NO.	DRAWING SHEET TITLE
1.01	WINDOW CLEANING, FALL PROTECTION, FACADE MAINTENANCE SAFETY EQUIPMENT LAYOUT & GENERAL NOTES
1.02	WINDOW CLEANING, FALL PROTECTION, FACADE MAINTENANCE SAFETY EQUIPMENT LAYOUT
1.03	WINDOW CLEANING, FALL PROTECTION, FACADE MAINTENANCE SAFETY EQUIPMENT LAYOUT
1.04	WINDOW CLEANING, FALL PROTECTION, FACADE MAINTENANCE SAFETY EQUIPMENT LAYOUT
2.01	WINDOW CLEANING, FALL PROTECTION, FACADE MAINTENANCE SAFETY EQUIPMENT SECTIONS
3.01	WINDOW CLEANING, FALL PROTECTION, FACADE MAINTENANCE SAFETY EQUIPMENT DETAILS
3.02	WINDOW CLEANING, FALL PROTECTION, FACADE MAINTENANCE SAFETY EQUIPMENT DETAILS

**PRO-BEL - EQUIPMENT SCHEDULE AND BILL OF MATERIAL**

DETAIL NO./ SHEET NO.	SYMBOL	PRODUCT DESCRIPTION	MODEL NO./PART NO.	QTY
1/5.01	[Symbol]	24" CAST IN EMBED DAVIT BASE	FA-DB6-23208-24	34
2/3.01	[Symbol]	30" CAST IN FULLY EMBEDDED ROOF ANCHOR	FA-PBE74EBD1-3006	176
3/3.01	[Symbol]	12" CAST IN FULLY EMBEDDED SCOTT ANCHOR	FA-PBE74EBD1P-1206	127
4/3.01	[Symbol]	24" CAST IN FULLY EMBEDDED ROOF ANCHOR	FA-PBE74EBD-2406	7
5/3.01	[Symbol]	GROUND RIG DAVIT ARM FULL ASSEMBLY (6'-4" TALL MAST, 4'-0" REACH)	CUSTOM-01	2
6/3.02	[Symbol]	ADAPTOR	FA-ADW622-08	2
7/3.02	[Symbol]	97" CAST IN VERTICAL RIGGING SLEEVE	FA-HLL-0L-PB1	2
		NON HANDS FREE DOUBLE LANYARD	FA-HLL-DL-PB2	12
		5/16" (210) STAINLESS STEEL FLEXIBLE CABLE -SEE CHART	P-HLL-SSC7x19-001	1792 FT
		NYLON ROLLER FOR CORNER	P-HLL-ROLLER-C	2

**HAZARD AREA NOTE:**  
 ACCESS TO ANY AREA WITHIN 6'-0" OF ROOF EDGE WHERE THE PARAPET WALL/RAILING IS LESS THAN 42" TALL IS RESTRICTED. WORKERS MUST BE TIED OFF TO AN ANCHOR OUTSIDE THESE AREAS PRIOR TO APPROACHING AND REMAIN CONTINUOUSLY TIED OFF WHEN WORKING WITHIN THESE AREAS.

**HLL SYSTEM AT ROOF:**  
 FOR HORIZONTAL LIFE LINES (HLL) WHERE THE ANCHORS ARE ALSO TO BE USED AS THE OFF POINTS FOR ROPE DESCENT SYSTEM, THE HLL LINE AND THE ROPE DESCENT SYSTEM SHOULD NOT BE USED CONCURRENTLY. ONLY TWO PERSONS SHOULD BE ON THE HLL AT ANY TIME, EITHER TIED OFF TO THE HLL LINE FOR FALL PROTECTION OR TIED TO THE ANCHOR FOR ROPE DESCENT SYSTEM.

**ACCESS TO EQUIPMENT NOTE:**  
 SAFE ACCESS & EGRESS, SUCH AS DOORS, WINDOWS AND ROOF HATCHES TO BE PROVIDED BY OTHERS, IN ORDER TO USE, INSPECT AND CERTIFY EQUIPMENT.

**PARAPET WALLS, BALINGS AND ROOF EDGES:**  
 SHALL BE DESIGNED TO PERFORM UNDER THE APPLIED MAXIMUM FALL ARREST LOAD OF 1800 LBS OCCURRING HORIZONTALLY AND 1800 LBS VERTICALLY, SUCH THAT THE STRUCTURE IS NOT DAMAGED OR ENDANGERING THE HEALTH AND SAFETY OF THE WORKER AND/OR THE PUBLIC. THIS IS THE RESPONSIBILITY OF THE STRUCTURAL ENGINEER OF RECORD FOR THE OVERALL PROJECT.

**IMPORTANT STRUCTURAL NOTE:**  
 ENGINEER OF RECORD FOR THE OVERALL PROJECT IS RESPONSIBLE FOR DESIGN OF THE BUILDING STRUCTURE, AND LOCAL REINFORCEMENT WHERE REQUIRED, TO WITHSTAND THE APPLIED LOADS OF THE SAFETY EQUIPMENT SUPPLIED BY PRO-BEL.

**NON-STRUCTURAL RIGGING NOTE:**  
 NON-STRUCTURAL PARAPET WALLS, BALINGS AND ROOF EDGES SHALL BE RIGGED IN SUCH A MANNER TO AVOID DAMAGING THE BUILDING OR ENDANGERING THE HEALTH AND SAFETY OF THE WORKER AND/OR THE PUBLIC. PROJECT LINES FROM CHAFING AT ALL TIMES.

**SPECIAL INSPECTION NOTE:**  
 SPECIAL INSPECTION OF ALL CAST IN PLACE AND WELDED CONNECTION ARE RESPONSIBILITY OF OTHERS AND SHOULD BE CONSIDERED. DOCUMENTED EVIDENCE OF SUCH INSPECTION SHALL BE MADE AVAILABLE TO PRO-BEL.

**IMPORTANT NOTE:**  
 WORKERS MUST USE A SHOCK ABSORBING LANYARD RATED FOR 900 LBS. MAXIMUM ARREST FORCE.

NO.	REVISION	BY	CHKD	MM/DD/YYYY

THESE DRAWINGS HAVE BEEN PREPARED BASED ON INFORMATION FOUND IN THE FOLLOWING:

REFERENCES	STRUCTURAL
ARCHITECTURAL	STRUCTURAL

PERKINS & WILL 11/03/2021 A04.10A WALTER P. MOORE 11/03/2021 S2.00A

THE ENGINEER'S SEAL INDICATES ONLY THAT THE DRAWING IS THE PROPERTY OF PRO-BEL. DRAWING SHALL NOT BE USED FOR ANY OTHER PROJECT WITHOUT THE WRITTEN CONSENT OF PRO-BEL. THE CONTRACTOR MUST VERIFY ALL DIMENSIONS.

ANY DEVIATION FROM THIS DRAWING MUST BE REPORTED TO PRO-BEL. ENTERPRISES LIMITED

THIS DRAWING MUST NOT BE USED FOR CONSTRUCTION UNLESS IT IS APPROVED.

**PRO-BEL ENTERPRISES LIMITED**  
 765 HESNEY ROAD SOUTH  
 AUM, ONTARIO, CANADA L1S 6M1  
 1(800) 427-9161, FAX (905) 427-2545  
 Toll Free 1 (800) 461-0575  
 E-Mail: info@pro-bel.ca  
 Web: www.pro-belgroup.com

CLIENT: **BRASFIELD & GORRIE, LLC**

PROJECT: **NGMC GAINESVILLE CLINICAL EXPANSION (FORMERLY) NGHS NORTH TOWER 2 743 SPRING ST NE GAINESVILLE, GA 30501**

PROJECT SCOPE: SUPPLY & INSTALL (CABLE ONLY) w/ SITE LOAD TESTING

MM/DD/YYYY: 10/12/2022	TECH. REVIEW
SCALE: AS INDICATED	SALES
DRAWN BY: BEN	MG
	CD

TITLE: **WINDOW CLEANING, FALL PROTECTION, FACADE MAINT. SAFETY EQUIPMENT LAYOUT & GENERAL NOTES**

NO. 101

REVISION

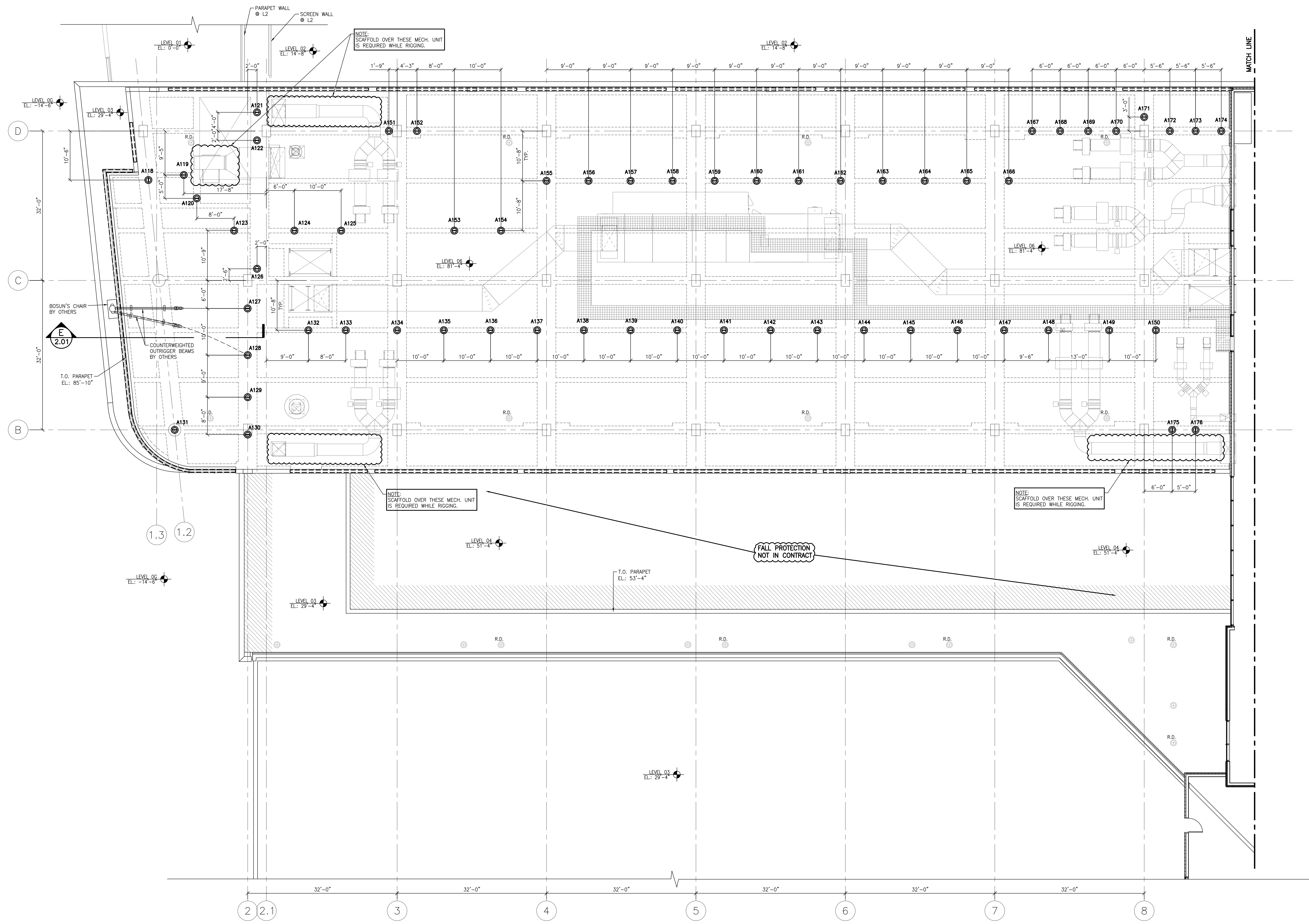
BY CHHD MM/DD/YYYY

1N1-2022-40059

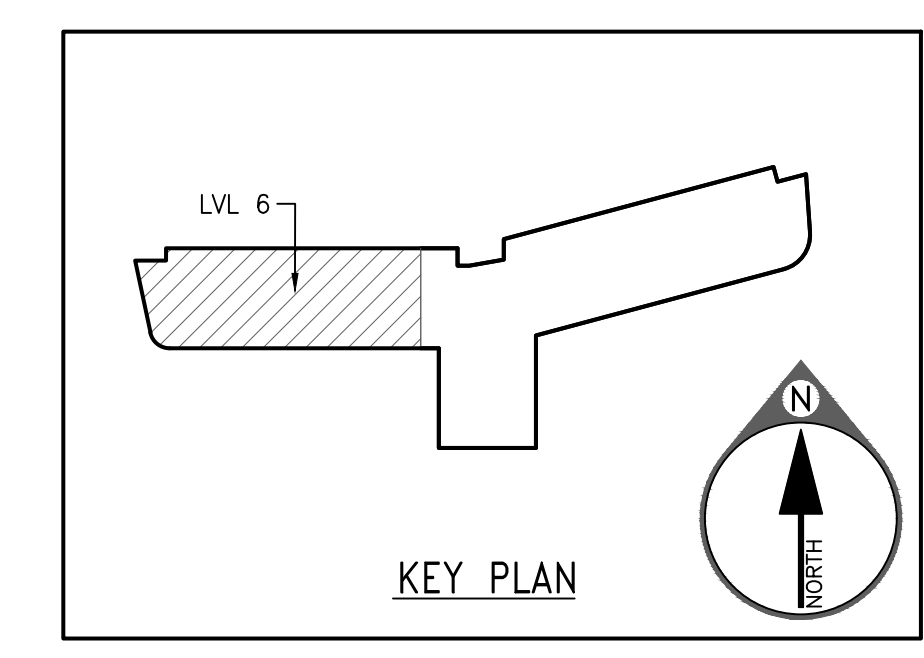
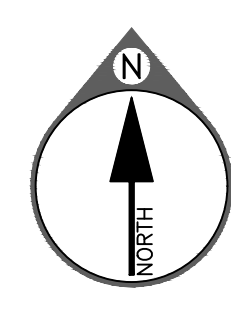
SHEET NO. 1.01

REV. NO. 0





**A2** PARTIAL ROOF PLAN/SAFETY EQUIPMENT LAYOUT @ LEVEL 6  
(REF: A09-09A/52.068) SCALE: 1/8" = 1'-0"



**IMPORTANT STRUCTURAL NOTE:**  
 ENGINEER OF RECORD FOR THE OVERALL PROJECT IS RESPONSIBLE FOR DESIGN OF THE BUILDING STRUCTURE, AND LOCAL REINFORCEMENT WHERE REQUIRED, TO WITHSTAND THE APPLIED LOADS OF THE SAFETY EQUIPMENT SUPPLIED BY PRO-BEL.

**SPECIAL INSPECTION NOTE:**  
 SPECIAL INSPECTION OF ALL CAST IN PLACE AND WELDED CONNECTION ARE RESPONSIBILITY OF OTHERS AND SHOULD BE CONSIDERED. DOCUMENTED EVIDENCE OF SUCH INSPECTION SHALL BE MADE AVAILABLE TO PRO-BEL.

NO.	REVISION	BY	CHKD	MM/DD/YYYY	REV. NO.
1					0

GENERAL NOTES - SEE SHEET 1.01

THE ENGINEER'S SEAL INDICATES ONLY THAT THE STRUCTURAL COMPONENTS SUPPLIED BY PRO-BEL:

- WILL RESIST THE LOADS INDICATED ON THIS DRAWING WHEN PROVIDED BY QUALIFIED STRUCTURAL ENGINEERS, OR
- HAVE BEEN LAB TESTED FOR THE LOADS INDICATED.

THIS DRAWING IS ON LOAN ONLY AND THE EQUIPMENT IS CONSIDERED CERTIFIED PROVIDED ANNUAL INSPECTIONS ARE PERFORMED IN ACCORDANCE WITH PRO-BEL LOG BOOK REQUIREMENTS.

THE CONTRACTOR MUST VERIFY ALL DIMENSIONS. ANY DEVIATION FROM THIS DRAWING MUST BE REPORTED TO PRO-BEL ENTERPRISES LIMITED.

THIS DRAWING MUST NOT BE USED FOR CONSTRUCTION UNLESS IT IS APPROVED.

PRO-BEL ENTERPRISES LIMITED  
 765 WESTNEY ROAD SOUTH  
 AUM, ONTARIO, CANADA L1S 6M1  
 Tel: (905) 427-0616, Fax: (905) 427-2545  
 Toll Free: 1 (800) 461-0575  
 Web: www.pro-belgroup.com  
 E-Mail: info@pro-bel.ca

CLIENT: BRASFIELD & GORRIE, LLC  
 PROJECT: NGMC GAINSVILLE CLINICAL EXPANSION (FORMERLY) NGHS NORTH TOWER 2  
 743 SPRING ST NE  
 GAINSVILLE, GA 30501

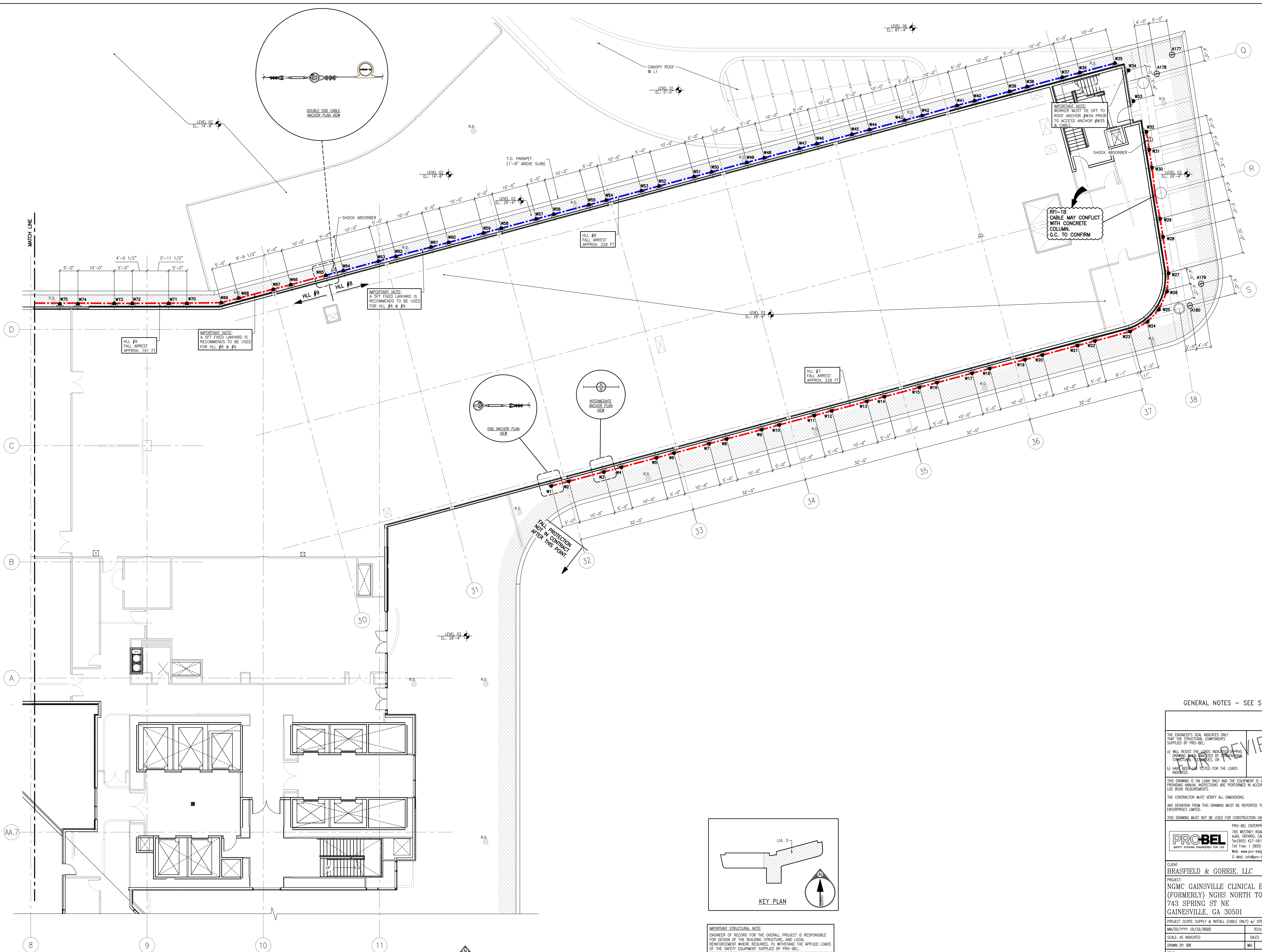
PROJECT SCOPE: SUPPLY & INSTALL (CABLE ONLY) w/ SITE LOAD TESTING

MM/DD/YYYY: 10/12/2022	TECH. REVIEW	
SCALE: AS INDICATED	SALES	PM
DRAWN BY: BEN	MG	CD

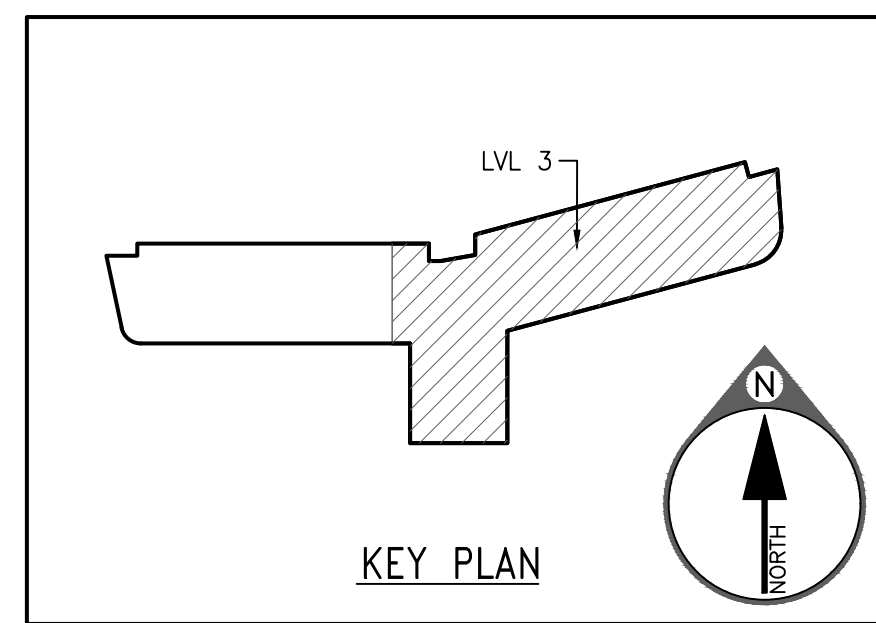
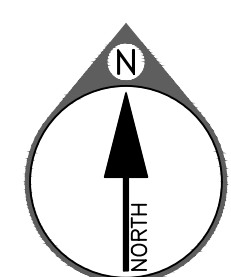
TITLE: WINDOW CLEANING, FALL PROTECTION, FACADE MAINT. SAFETY EQUIPMENT LAYOUT

JOB NO: 1N1-2022-40059 SHEET NO: 1.02 REV. NO: 0





**A.3** PARTIAL ROOF PLAN/SAFETY EQUIPMENT LAYOUT @ LEVEL 3  
 (REF: A09-034) SCALE: 1/8" = 1'-0"



**IMPORTANT STRUCTURAL NOTE:**  
 ENGINEER OF RECORD FOR THE OVERALL PROJECT IS RESPONSIBLE FOR DESIGN OF THE BUILDING STRUCTURE, AND LOCAL REINFORCEMENT WHERE REQUIRED, TO WITHSTAND THE APPLIED LOADS OF THE SAFETY EQUIPMENT SUPPLIED BY PRO-BEL.

**SPECIAL INSPECTION NOTE:**  
 SPECIAL INSPECTION OF ALL CAST IN PLACE AND WELDED CONNECTION ARE RESPONSIBILITY OF OTHERS AND SHOULD BE CONSIDERED. DOCUMENTED EVIDENCE OF SUCH INSPECTION SHALL BE MADE AVAILABLE TO PRO-BEL.

**GENERAL NOTES - SEE SHEET 1.01**

THE ENGINEER'S SEAL INDICATES ONLY THAT THE STRUCTURAL COMPONENTS SUPPLIED BY PRO-BEL:  
 1) WILL RESIST THE LOADS INDICATED ON THIS DRAWING WHEN INSTALLED BY QUALIFIED STRUCTURAL TECHNICIANS, OR  
 2) HAVE BEEN LAB TESTED FOR THE LOADS INDICATED.

THIS DRAWING IS ON LOAN ONLY AND THE EQUIPMENT IS CONSIDERED CERTIFIED PROVIDED ANNUAL INSPECTIONS ARE PERFORMED IN ACCORDANCE WITH PRO-BEL LOG BOOK REQUIREMENTS.

THE CONTRACTOR MUST VERIFY ALL DIMENSIONS. ANY DEVIATION FROM THIS DRAWING MUST BE REPORTED TO PRO-BEL ENTERPRISES LIMITED.

THIS DRAWING MUST NOT BE USED FOR CONSTRUCTION UNTIL IT IS APPROVED.

PRO-BEL ENTERPRISES LIMITED  
 765 WESLEY ROAD SOUTH  
 ALMA, ONTARIO, CANADA L1S 6M1  
 Tel: (905) 427-0616, Fax: (905) 427-2545  
 Toll Free: 1 (800) 461-0575  
 Web: www.pro-belgroup.com  
 E-Mail: info@pro-bel.ca

CLIENT: BRASFIELD & GORRIE, LLC  
 PROJECT: NGMC GAINESVILLE CLINICAL EXPANSION (FORMERLY) NGHS NORTH TOWER 2  
 743 SPRING ST NE  
 GAINESVILLE, GA 30501

PROJECT SCOPE: SUPPLY & INSTALL (CABLE ONLY) w/ SITE LOAD TESTING

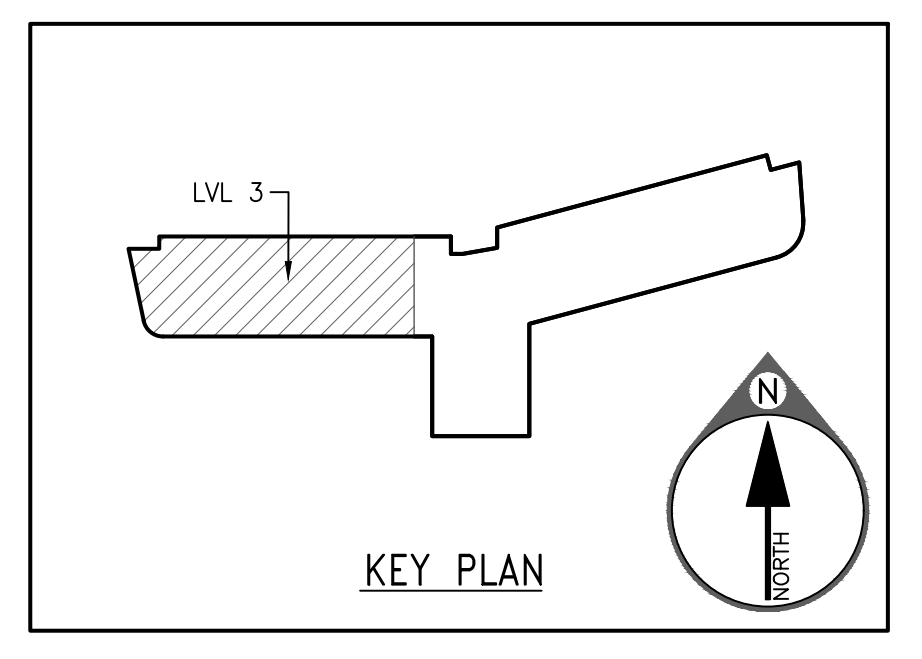
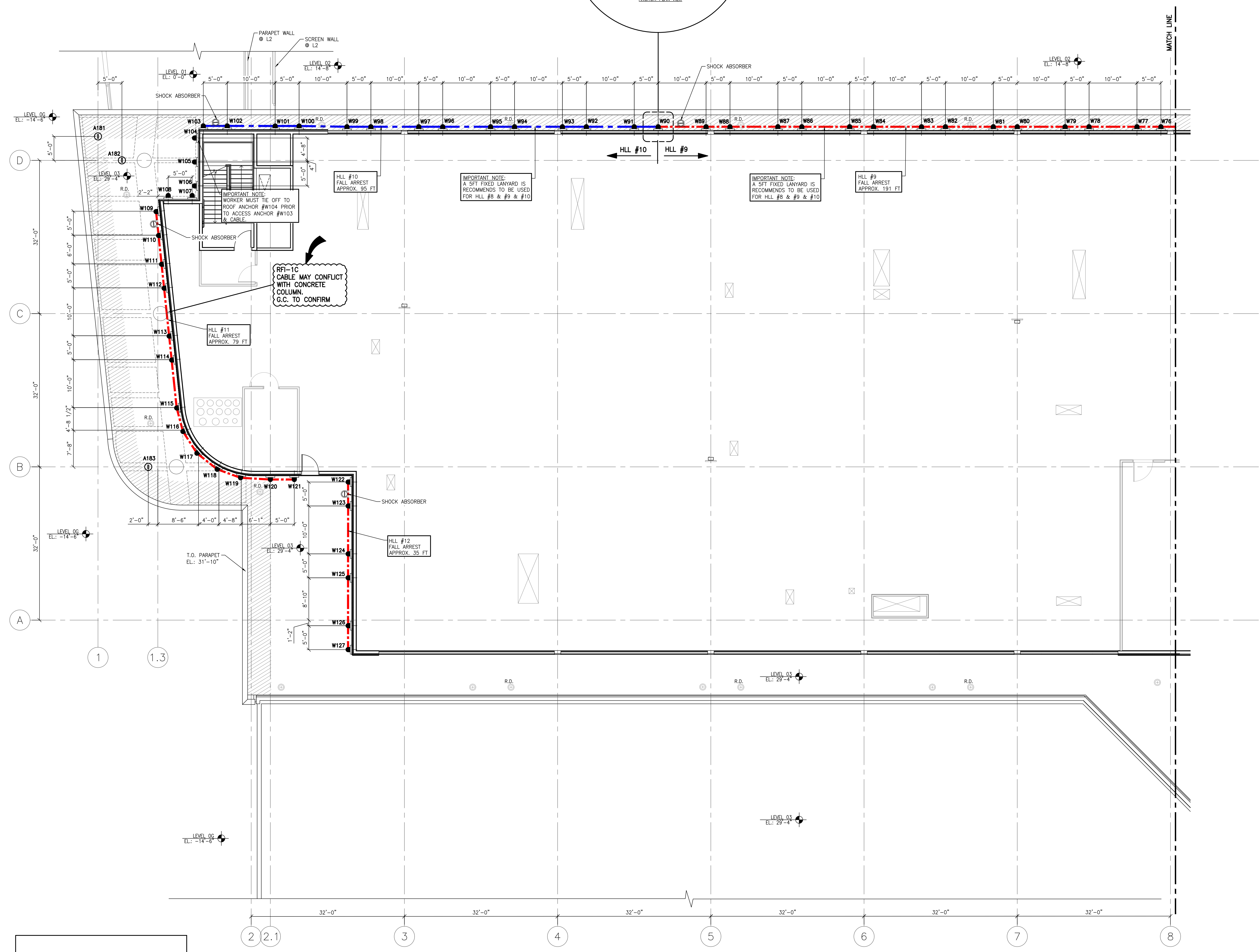
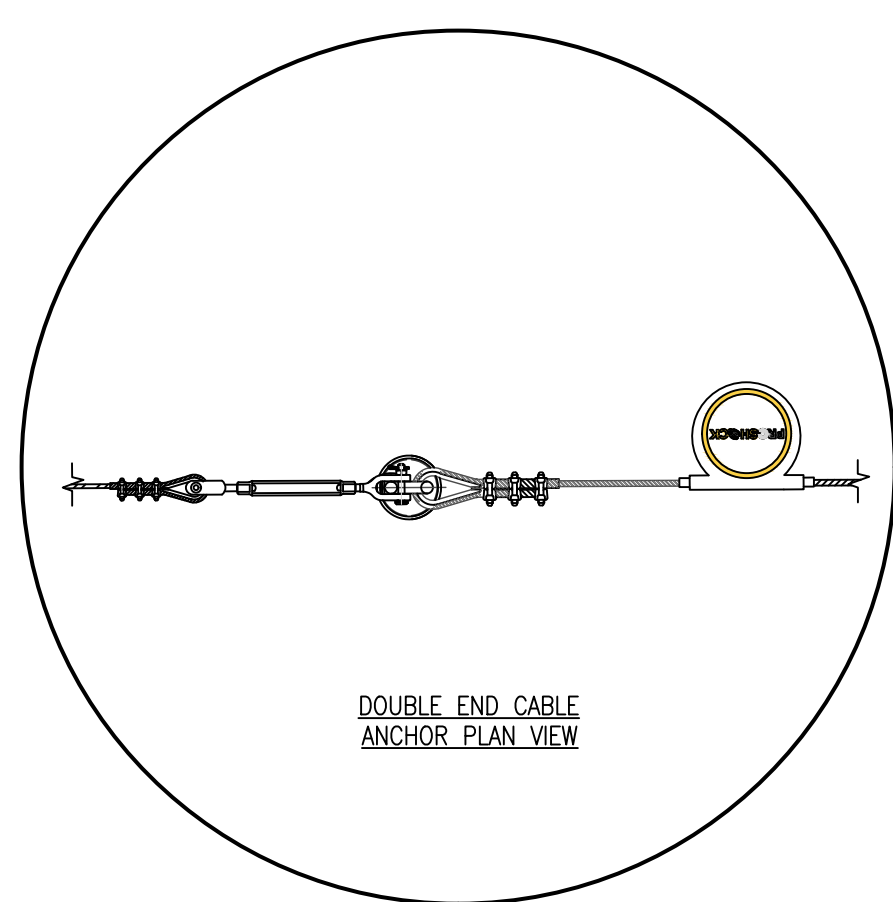
MM/DD/YYYY: 10/12/2022	TECH. REVIEW	
SCALE: AS INDICATED	SALES	PM
DRAWN BY: BEN	MG	CD

TITLE: WINDOW CLEANING, FALL PROTECTION, FACADE MAINT. SAFETY EQUIPMENT LAYOUT

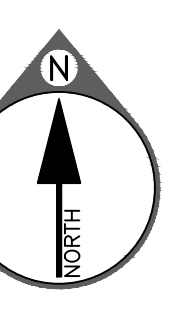
JOB NO.	SHEET NO.	REV. NO.
1N1-2022-40059	1.03	0

NO.	REVISION	BY	CHKD	MM/DD/YYYY





**A4 1.04** PARTIAL ROOF PLAN/SAFETY EQUIPMENT LAYOUT @ LEVEL 3  
 (REF.: A09-038) SCALE: 1/8" = 1'-0"



GENERAL NOTES - SEE SHEET 1.01

THE ENGINEER'S SEAL INDICATES ONLY THAT THE STRUCTURAL COMPONENTS SUPPLIED BY PRO-BEL:

1) WILL RESIST THE LOADS INDICATED ON THIS DRAWING AS APPROVED BY AN INDEPENDENT STRUCTURAL ENGINEER, OR

2) HAVE BEEN LAB TESTED FOR THE LOADS INDICATED.

THIS DRAWING IS ON LOAN ONLY AND THE EQUIPMENT IS CONSIDERED CERTIFIED PROVIDED ANNUAL INSPECTIONS ARE PERFORMED IN ACCORDANCE WITH PRO-BEL LOG BOOK REQUIREMENTS.

THE CONTRACTOR MUST VERIFY ALL DIMENSIONS. ANY DEVIATION FROM THIS DRAWING MUST BE REPORTED TO PRO-BEL ENTERPRISES LIMITED.

THIS DRAWING MUST NOT BE USED FOR CONSTRUCTION UNTIL IT IS APPROVED.

PRO-BEL ENTERPRISES LIMITED  
**PROBEL**  
 765 WESLEY ROAD SOUTH  
 ALMA, ONTARIO, CANADA L1S 6M1  
 Tel: (905) 427-0616, Fax: (905) 427-2545  
 Toll Free: 1 (800) 461-0575  
 Web: www.pro-belgroup.com  
 E-Mail: info@pro-bel.ca

CLIENT: BRASFIELD & GORRIE, LLC  
 PROJECT: NCMC GAINESVILLE CLINICAL EXPANSION (FORMERLY) NGH5 NORTH TOWER 2  
 743 SPRING ST NE  
 GAINESVILLE, GA 30501  
 PROJECT SCOPE: SUPPLY & INSTALL (CABLE ONLY) w/ SITE LOAD TESTING

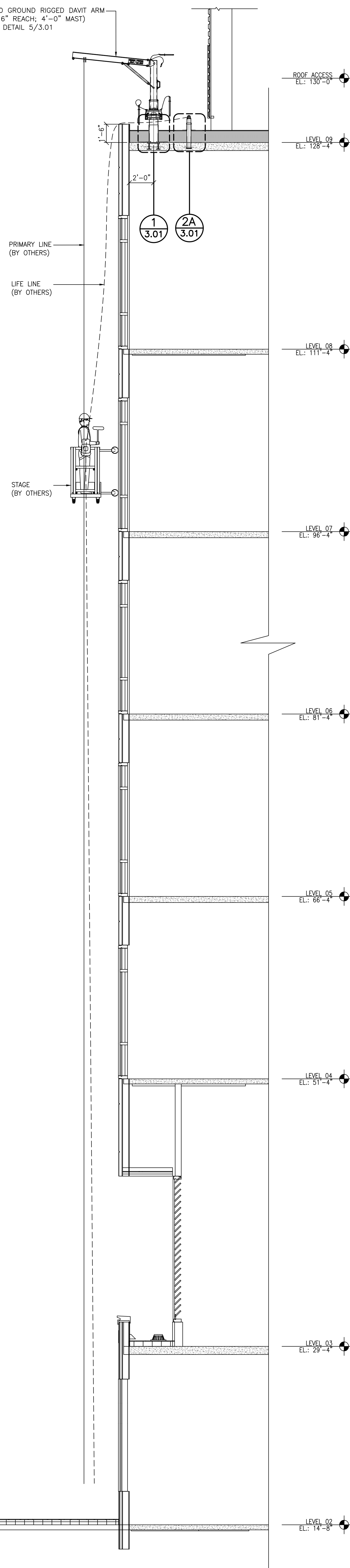
MM/DD/YYYY: 10/12/2022	TECH. REVIEW		
SCALE: AS INDICATED	SALES	PM	ENG/SLP
DRAWN BY: BEN	MG	CD	
TITLE: WINDOW CLEANING, FALL PROTECTION, FACADE MAINT. SAFETY EQUIPMENT LAYOUT			
JOB NO. 1N1-2022-40059	SHEET NO. 1.04	REV. NO. 0	

**IMPORTANT STRUCTURAL NOTE:**  
 ENGINEER OF RECORD FOR THE OVERALL PROJECT IS RESPONSIBLE FOR DESIGN OF THE BUILDING STRUCTURE, AND LOCAL REINFORCEMENT WHERE REQUIRED, TO WITHSTAND THE APPLIED LOADS OF THE SAFETY EQUIPMENT SUPPLIED BY PRO-BEL.

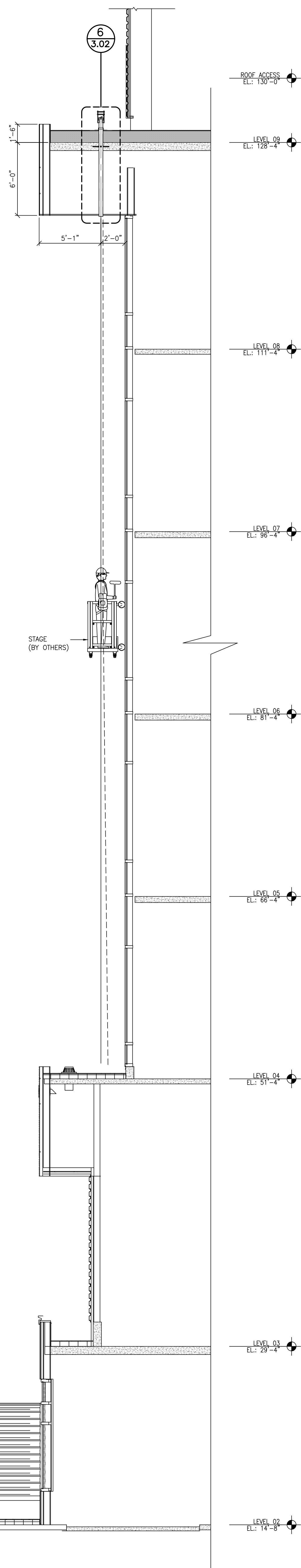
**SPECIAL INSPECTION NOTE:**  
 SPECIAL INSPECTION OF ALL CAST IN PLACE AND WELDED CONNECTION ARE RESPONSIBILITY OF OTHERS AND SHOULD BE CONSIDERED. DOCUMENTED EVIDENCE OF SUCH INSPECTION SHALL BE MADE AVAILABLE TO PRO-BEL.

NO.	REVISION	BY	CHKD	MM/DD/YYYY

A100 GROUND RIGGED DAVIT ARM  
(6'-6" REACH, 4'-0" MAIST)  
SEE DETAIL 5/3.01



**B** 2.01 TYPICAL WALL SECTION  
(REF.: 2/A31-002) SCALE: 1/4"=1'



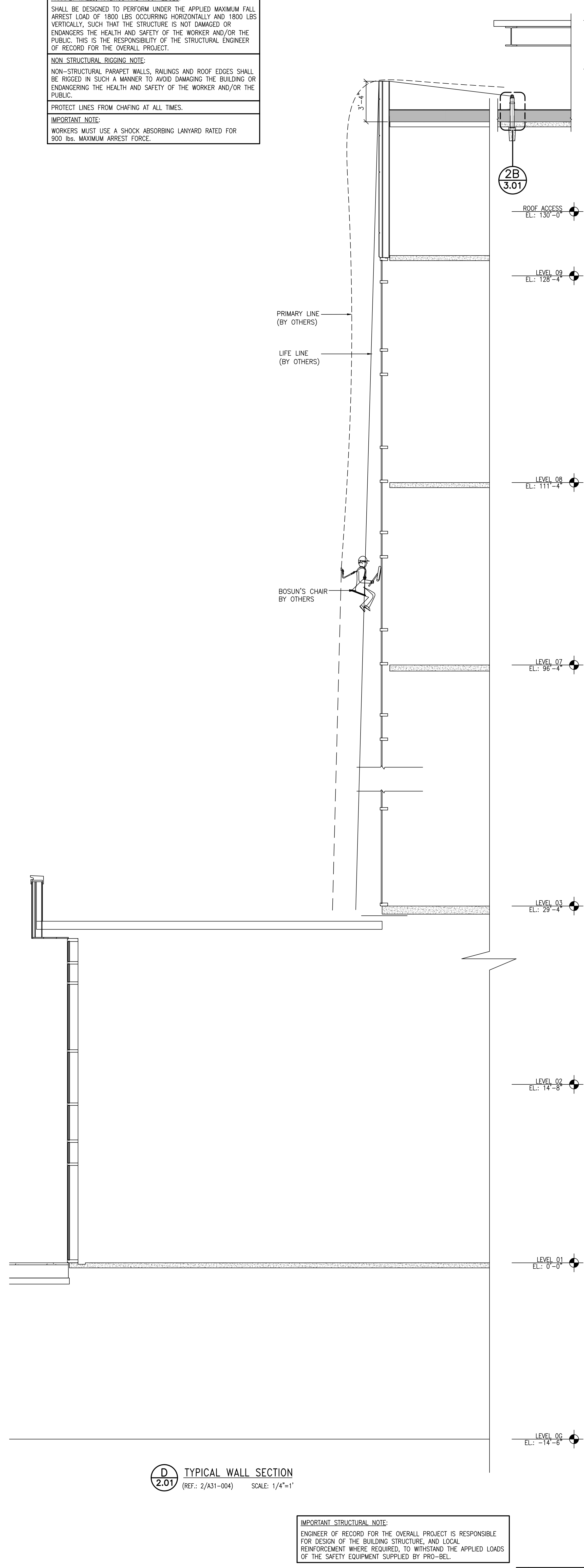
**C** 2.01 TYPICAL WALL SECTION  
(REF.: 1/A31-002) SCALE: 1/4"=1'

**PARAMET. WALLS, RAILINGS AND ROOF EDGES:**  
SHALL BE DESIGNED TO PERFORM UNDER THE APPLIED MAXIMUM FALL ARREST LOAD OF 1800 LBS OCCURRING HORIZONTALLY AND 1800 LBS VERTICALLY, SUCH THAT THE STRUCTURE IS NOT DAMAGED OR ENDANGERS THE HEALTH AND SAFETY OF THE WORKER AND/OR THE PUBLIC. THIS IS THE RESPONSIBILITY OF THE STRUCTURAL ENGINEER OF RECORD FOR THE OVERALL PROJECT.

**NON-STRUCTURAL RIGGING NOTE:**  
NON-STRUCTURAL PARAMET. WALLS, RAILINGS AND ROOF EDGES SHALL BE RIGGED IN SUCH A MANNER TO AVOID DAMAGING THE BUILDING OR ENDANGERING THE HEALTH AND SAFETY OF THE WORKER AND/OR THE PUBLIC.

**PROTECT LINES FROM CHAFING AT ALL TIMES.**

**IMPORTANT NOTE:**  
WORKERS MUST USE A SHOCK ABSORBING LANYARD RATED FOR 900 LBS. MAXIMUM ARREST FORCE.



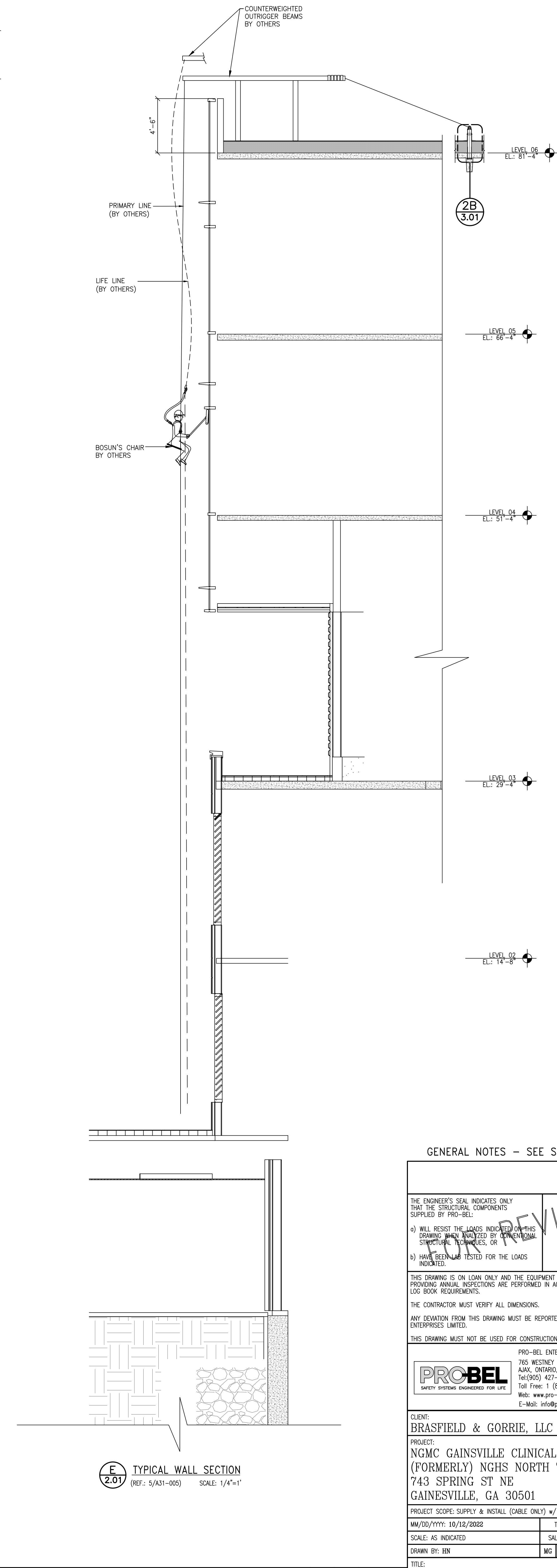
**D** 2.01 TYPICAL WALL SECTION  
(REF.: 2/A31-004) SCALE: 1/4"=1'

**IMPORTANT STRUCTURAL NOTE:**  
ENGINEER OF RECORD FOR THE OVERALL PROJECT IS RESPONSIBLE FOR DESIGN OF THE BUILDING STRUCTURE, AND LOCAL REINFORCEMENT WHERE REQUIRED, TO WITHSTAND THE APPLIED LOADS OF THE SAFETY EQUIPMENT SUPPLIED BY PRO-BEL.

**SPECIAL INSPECTION NOTE:**  
SPECIAL INSPECTION OF ALL CAST IN PLACE AND WELDED CONNECTION ARE RESPONSIBILITY OF OTHERS AND SHOULD BE CONSIDERED. DOCUMENTED EVIDENCE OF SUCH INSPECTION SHALL BE MADE AVAILABLE TO PRO-BEL.



**E** 2.01 TYPICAL WALL SECTION  
(REF.: 5/A31-005) SCALE: 1/4"=1'



GENERAL NOTES - SEE SHEET 1.01

THE ENGINEER'S SEAL INDICATES ONLY THAT THE STRUCTURAL COMPONENTS SUPPLIED BY PRO-BEL:

- WILL RESIST THE LOADS INDICATED ON THIS DRAWING SHALL BE PROVIDED BY OTHERS. STRUCTURAL TECHNIQUES, OR
- HAVE BEEN LAB TESTED FOR THE LOADS INDICATED.

THIS DRAWING IS ON LOAN ONLY AND THE EQUIPMENT IS CONSIDERED CERTIFIED PROVIDED ANNUAL INSPECTIONS ARE PERFORMED IN ACCORDANCE WITH PRO-BEL LOG BOOK REQUIREMENTS.

THE CONTRACTOR MUST VERIFY ALL DIMENSIONS. ANY DEVIATION FROM THIS DRAWING MUST BE REPORTED TO PRO-BEL ENTERPRISES LIMITED.

THIS DRAWING MUST NOT BE USED FOR CONSTRUCTION UNTIL IT IS APPROVED.

PRO-BEL ENTERPRISES LIMITED  
765 WESLEY ROAD SOUTH  
ALMA, ONTARIO, CANADA L1S 6M1  
Tel: (905) 427-0616, Fax: (905) 427-2545  
Toll Free: 1 (800) 461-0575  
Web: www.pro-belgroup.com  
E-Mail: info@pro-bel.ca

CLIENT: BRASFIELD & GORRIE, LLC  
PROJECT: NGMC GAINESVILLE CLINICAL EXPANSION (FORMERLY) NGHS NORTH TOWER 2  
743 SPRING ST NE  
GAINESVILLE, GA 30501

PROJECT SCOPE: SUPPLY & INSTALL (CABLE ONLY) w/ SITE LOAD TESTING

MM/DD/YYYY: 10/12/2022	TECH. REVIEW	-
SCALE: AS INDICATED	SALES	PM
DRAWN BY: BEN	MG	CD

TITLE: WINDOW CLEANING, FALL PROTECTION, FACADE MAINT. SAFETY EQUIPMENT SECTIONS

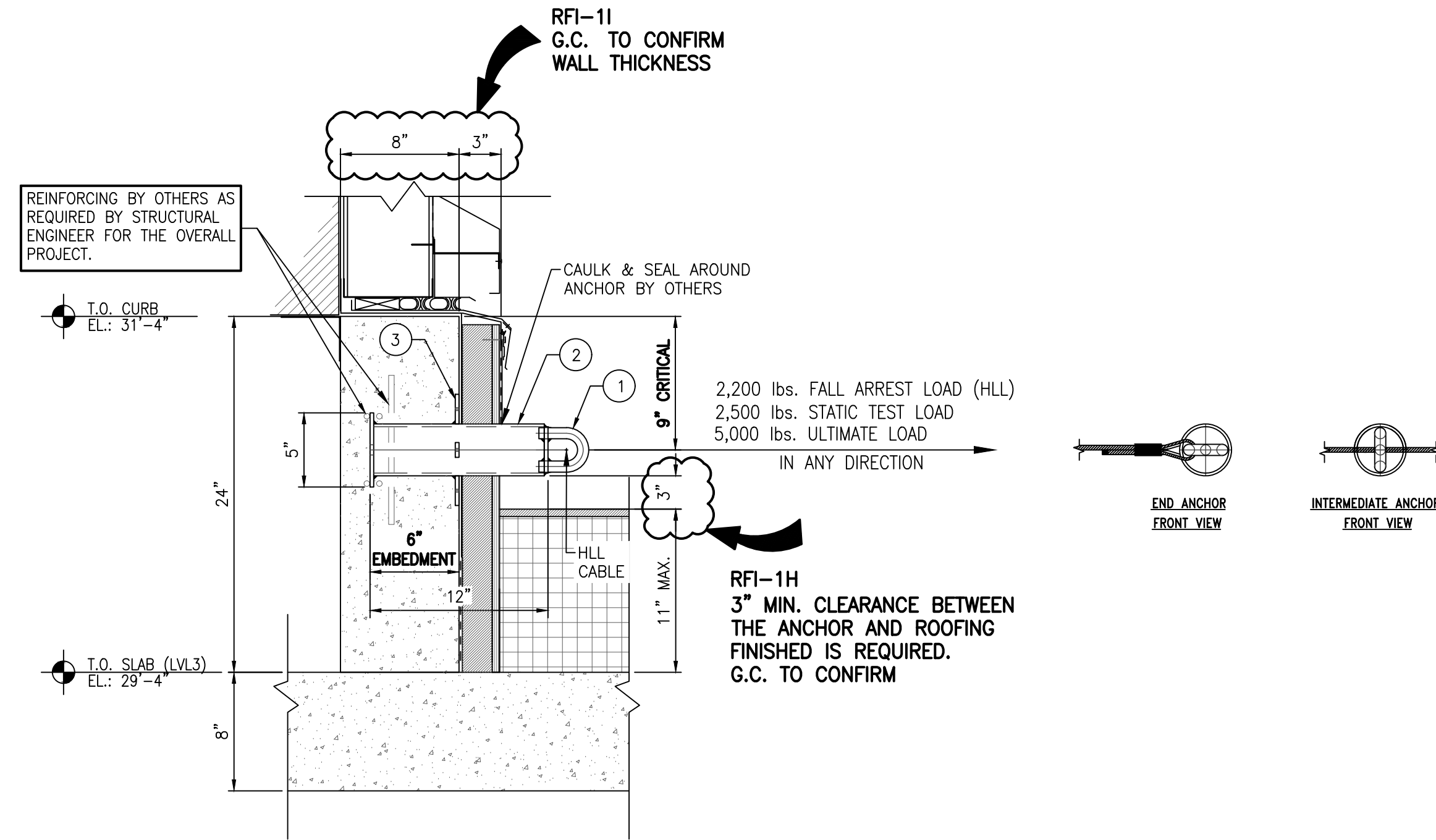
2.01 SHEET NO. 2.01 REV. NO. 0

NO.	REVISION	BY	CHKD	MM/DD/YYYY
1				



PRO-BEL FULL ASSEMBLY MODEL #FA-PBE74E80NP-1206

- 3/4" STAINLESS STEEL U-BAR.
- 3 1/2" O.D. GALVANIZED STEEL PIER WITH 5" x 5" BASE PLATE.
- GALVANIZED STEEL NAILING PLATES (4x).

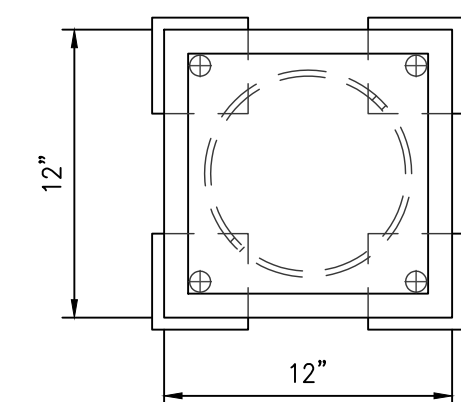


ALL ANCHORS MAY BE SUBJECTED TO STATIC LOAD TEST, BASED ON SITE CONDITIONS, APPROPRIATE TESTING METHODS AND TEST LOADS WILL BE USED TO IMPOSE EQUIVALENT LOADS AND MOMENTS ON THE STRUCTURE AND ITS CONNECTION AS GENERATED BY A 2500LBS STATIC LOAD AT MAXIMUM HEIGHT. ENSURE THE STRUCTURE IS DESIGNED TO RESIST THE ULTIMATE LOAD AND DOES NOT SHOW DISTRESS AND PERMANENT DEFORMATION AT TEST LOADS.

3 3.01 12" CAST IN FULLY EMBEDDED SOFFIT ANCHOR DETAIL (REF: 6/A61-010) SCALE: 1 1/2"=1'-0"

PRO-BEL FULL ASSEMBLY MODEL #FA-DB6-23208-24

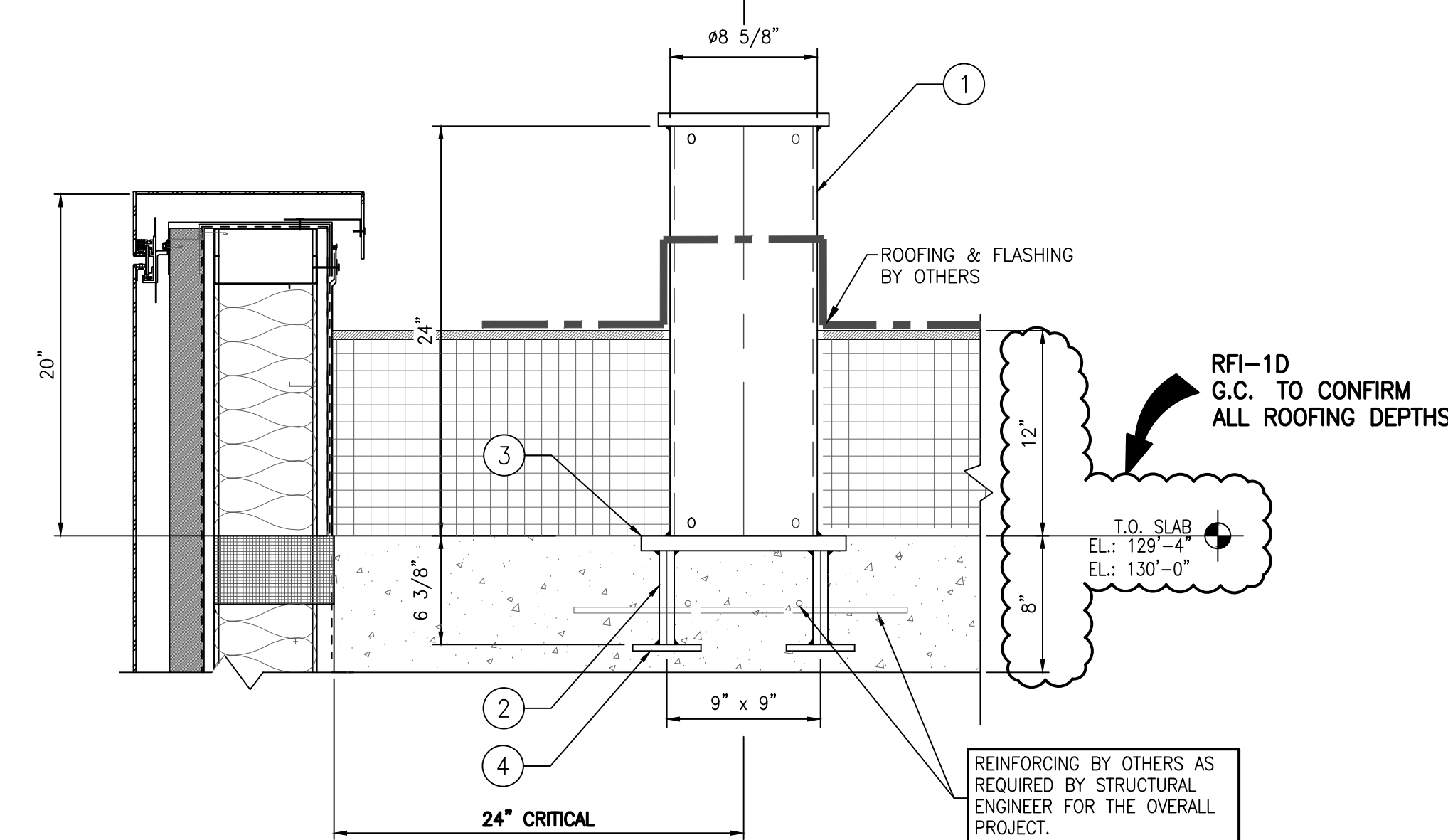
- 8 5/8" O.D. GALVANIZED STEEL HSS w/ 10" x 10" GALVANIZED STEEL TOP PLATE.
- SUB-ASSEMBLY MODEL #SA-MB014024-EM638
- 7/8" GALVANIZED STEEL RODS (4x).
- 12" x 12" GALVANIZED STEEL PLATE.
- 4" x 4" GALVANIZED STEEL BACK PLATES (4x).



TOP VIEW

8'-6" MAX. DAVIT REACH

STATIC TEST LOAD [2,000 lbs.]  
WORKING LOAD [1,000 lbs.]  
FACTORED LOAD [4,000 lbs.]



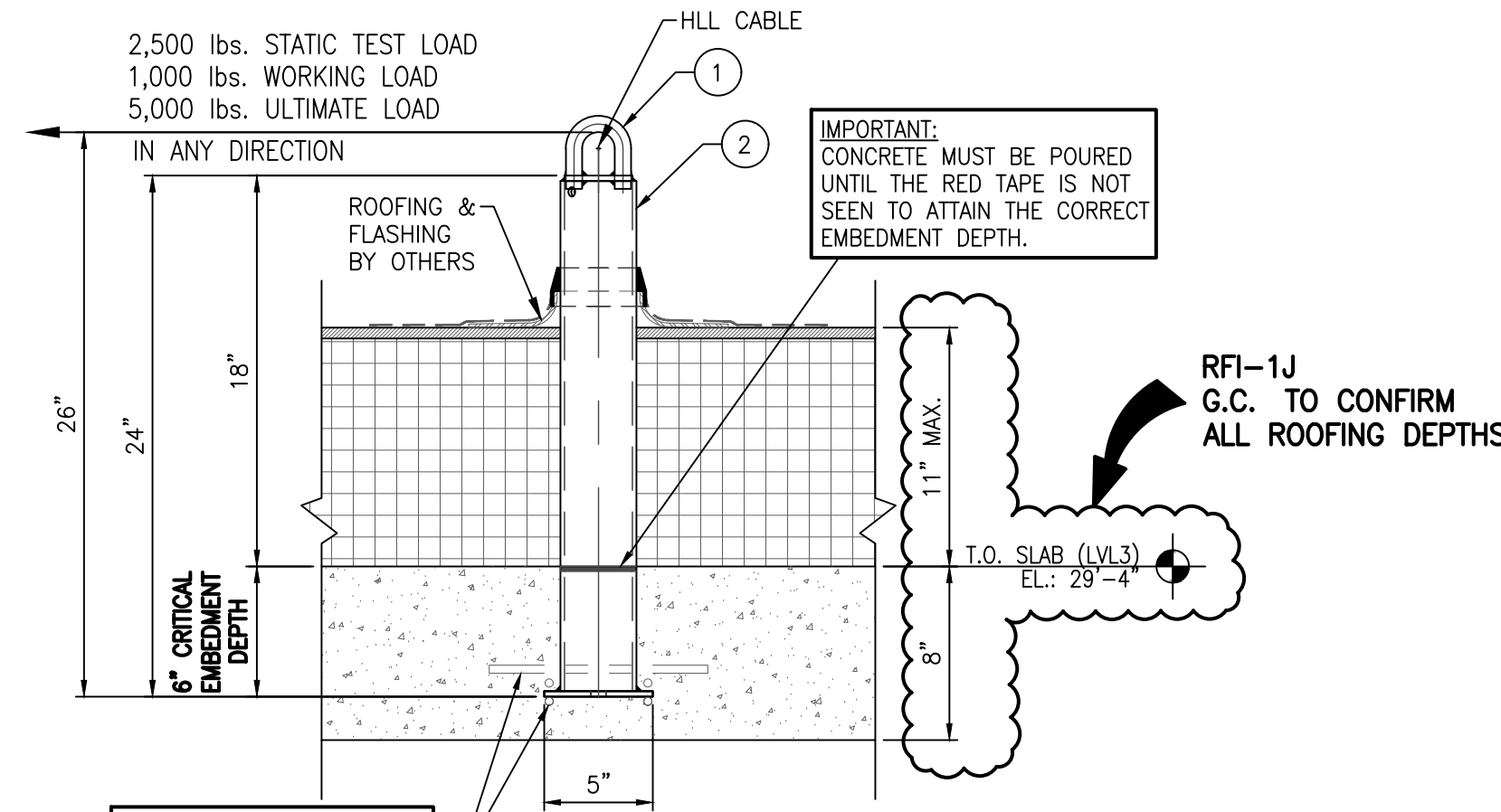
NOTE:  
1. SEE ROOF PLAN FOR THE ORIENTATION OF DAVIT BASE.  
2. DIRECTION OF ARROW ON ROOF PLAN INDICATES ORIENTATION OF FRONT OF DAVIT BASE.

ALL DAVIT SYSTEMS MAY BE SUBJECTED TO STATIC LOAD TEST, BASED ON SITE CONDITIONS, APPROPRIATE TESTING METHODS AND TEST LOADS WILL BE USED TO IMPOSE EQUIVALENT LOADS AND MOMENTS ON THE STRUCTURE AND ITS CONNECTION AS GENERATED BY A 2500LBS STATIC LOAD AT MAXIMUM HEIGHT. ENSURE THE STRUCTURE IS DESIGNED TO RESIST THE ULTIMATE LOAD AND DOES NOT SHOW DISTRESS AND PERMANENT DEFORMATION AT TEST LOADS.

1 3.01 24" CAST-IN EMBED DAVIT BASE DETAIL (REF: 6/A61-011) SCALE: 1 1/2"=1'-0"

PRO-BEL FULL ASSEMBLY MODEL #FA-PBE74E80-2406

- 3/4" STAINLESS STEEL U-BAR.
- 3 1/2" O.D. GALVANIZED STEEL PIER WITH 5" x 5" BASE PLATE.



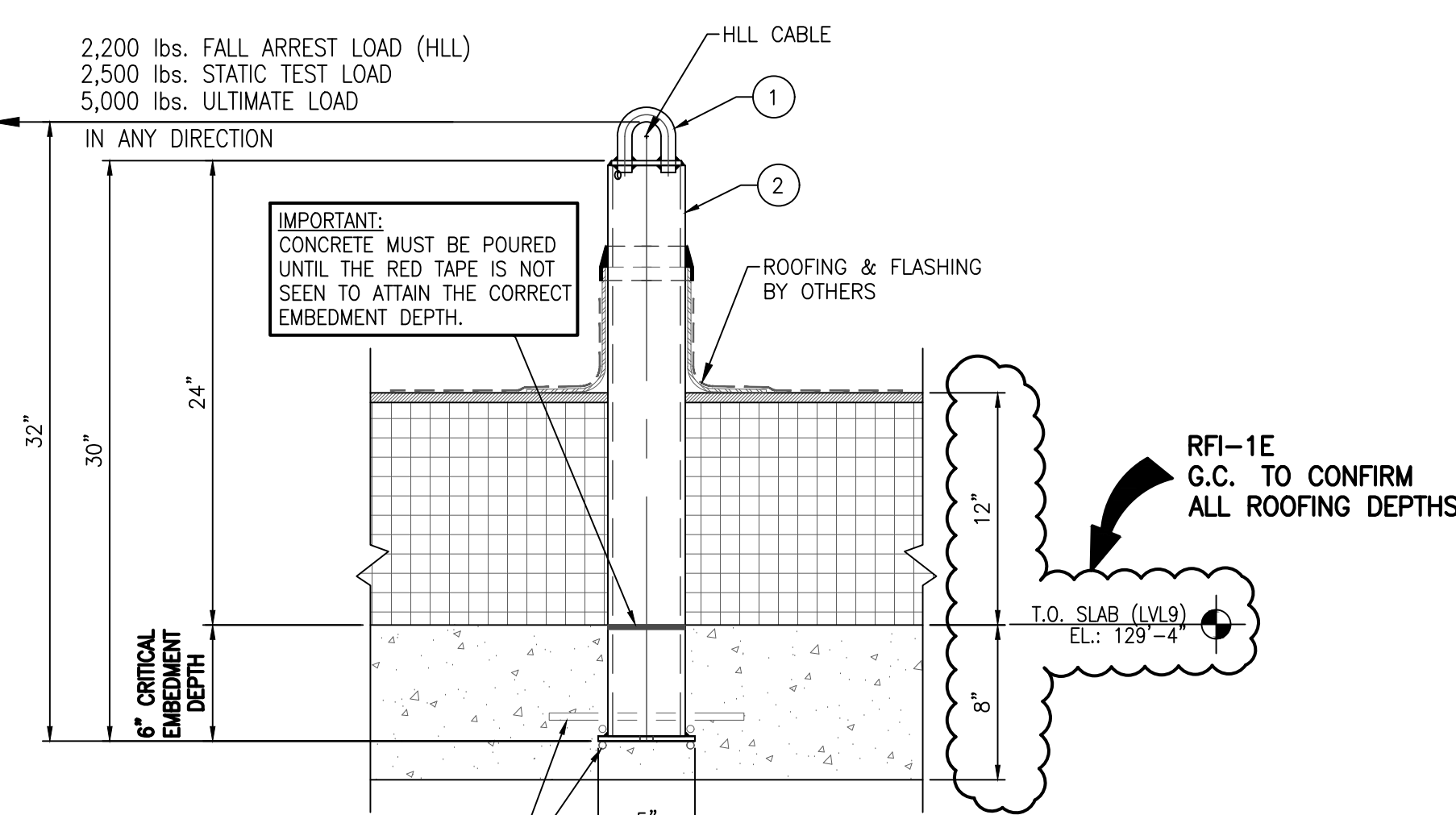
REINFORCING BY OTHERS AS REQUIRED BY STRUCTURAL ENGINEER FOR THE OVERALL PROJECT.

ALL ANCHORS MAY BE SUBJECTED TO STATIC LOAD TEST, BASED ON SITE CONDITIONS, APPROPRIATE TESTING METHODS AND TEST LOADS WILL BE USED TO IMPOSE EQUIVALENT LOADS AND MOMENTS ON THE STRUCTURE AND ITS CONNECTION AS GENERATED BY A 2500LBS STATIC LOAD AT MAXIMUM HEIGHT. ENSURE THE STRUCTURE IS DESIGNED TO RESIST THE ULTIMATE LOAD AND DOES NOT SHOW DISTRESS AND PERMANENT DEFORMATION AT TEST LOADS.

4 3.01 24" CAST IN FULLY EMBEDDED ROOF ANCHOR DETAIL @ LVL3 (REF: 6/A61-010) SCALE: 1 1/2"=1'-0"

PRO-BEL FULL ASSEMBLY MODEL #FA-PBE74E80B1-3006

- 3/4" STAINLESS STEEL U-BAR.
- 4" O.D. GALVANIZED STEEL PIER WITH 5" x 5" BASE PLATE.



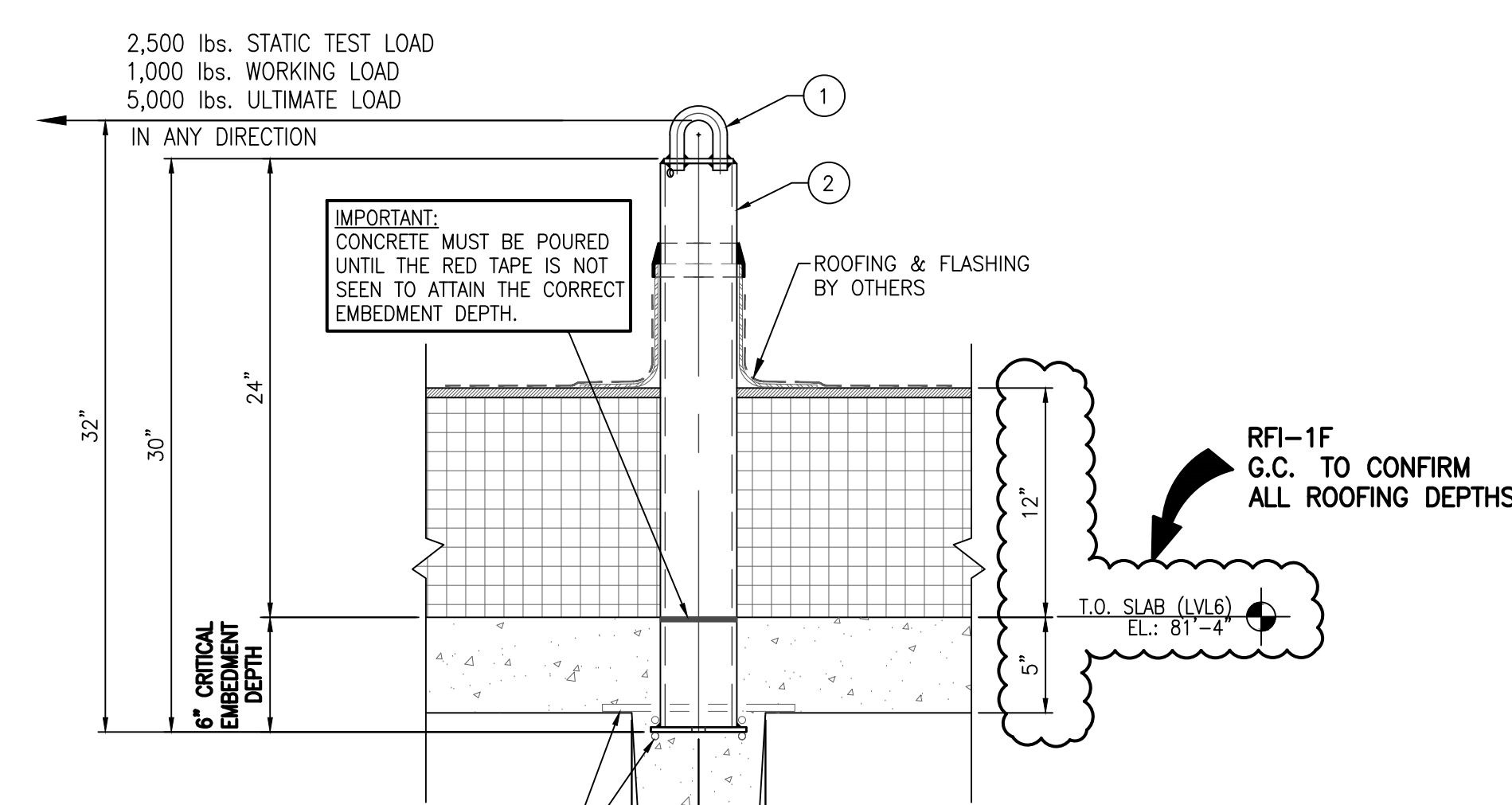
REINFORCING BY OTHERS AS REQUIRED BY STRUCTURAL ENGINEER FOR THE OVERALL PROJECT.

ALL ANCHORS MAY BE SUBJECTED TO STATIC LOAD TEST, BASED ON SITE CONDITIONS, APPROPRIATE TESTING METHODS AND TEST LOADS WILL BE USED TO IMPOSE EQUIVALENT LOADS AND MOMENTS ON THE STRUCTURE AND ITS CONNECTION AS GENERATED BY A 2500LBS STATIC LOAD AT MAXIMUM HEIGHT. ENSURE THE STRUCTURE IS DESIGNED TO RESIST THE ULTIMATE LOAD AND DOES NOT SHOW DISTRESS AND PERMANENT DEFORMATION AT TEST LOADS.

2A 3.01 30" CAST IN FULLY EMBEDDED ROOF ANCHOR DETAIL (REF: 9/A61-011) SCALE: 1 1/2"=1'-0"

PRO-BEL FULL ASSEMBLY MODEL #FA-PBE74E80B1-3006

- 3/4" STAINLESS STEEL U-BAR.
- 4" O.D. GALVANIZED STEEL PIER WITH 5" x 5" BASE PLATE.



REINFORCING BY OTHERS AS REQUIRED BY STRUCTURAL ENGINEER FOR THE OVERALL PROJECT.

ALL ANCHORS MAY BE SUBJECTED TO STATIC LOAD TEST, BASED ON SITE CONDITIONS, APPROPRIATE TESTING METHODS AND TEST LOADS WILL BE USED TO IMPOSE EQUIVALENT LOADS AND MOMENTS ON THE STRUCTURE AND ITS CONNECTION AS GENERATED BY A 2500LBS STATIC LOAD AT MAXIMUM HEIGHT. ENSURE THE STRUCTURE IS DESIGNED TO RESIST THE ULTIMATE LOAD AND DOES NOT SHOW DISTRESS AND PERMANENT DEFORMATION AT TEST LOADS.

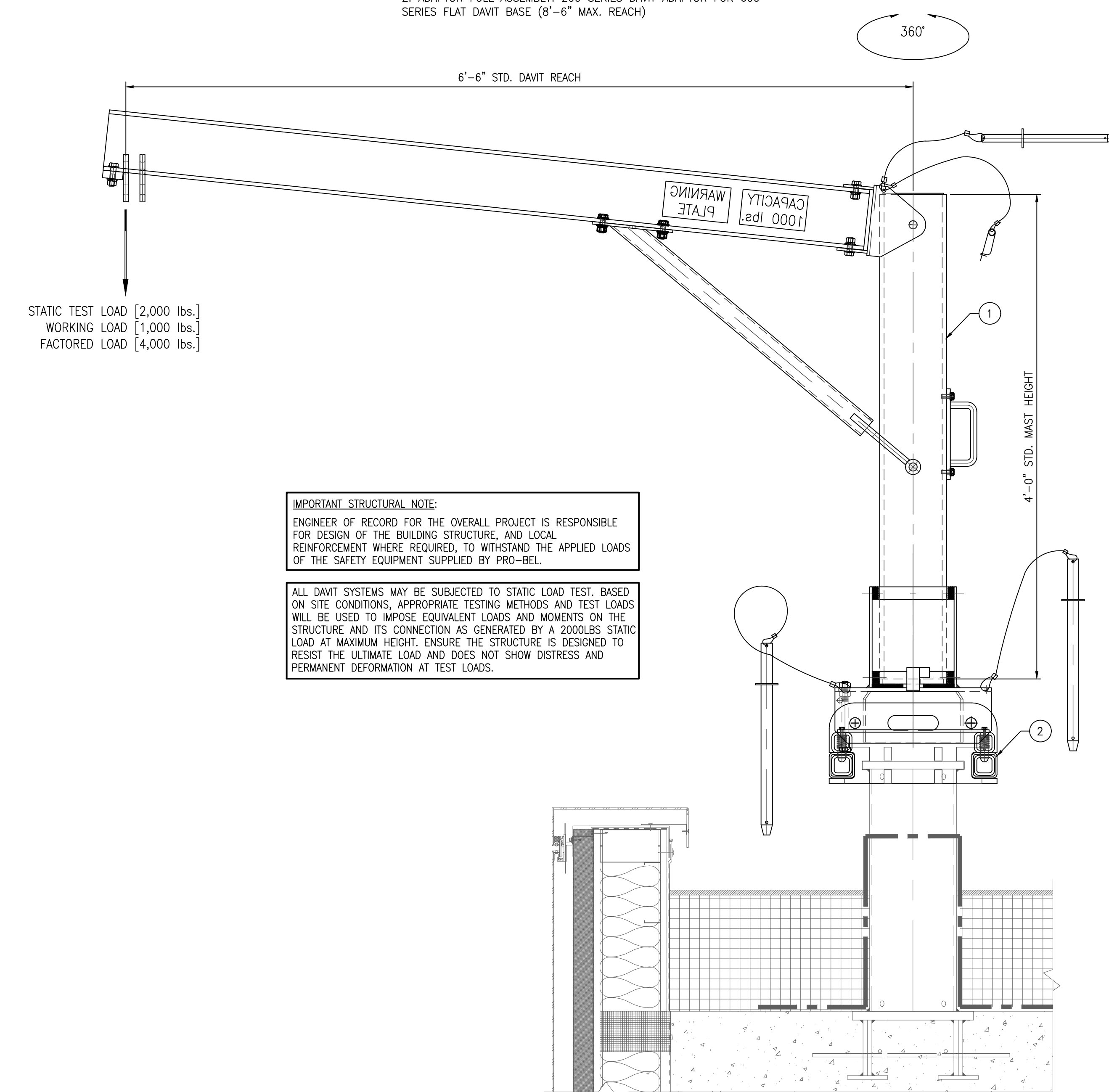
2B 3.01 30" CAST IN FULLY EMBEDDED ROOF ANCHOR DETAIL (REF: 9/A61-011) SCALE: 1 1/2"=1'-0"

PRO-BEL DAVIT ARM FULL ASSEMBLY MODEL #CUSTOM-1

- A100 - BOTTOM ROTATING ALUMINUM DAVIT ARM [4'-0" TALL (6 5/8" O.D. MAST), 6'-6" REACH (1 634 B00M)] c/w SOCKET & DOUBLE FRICTION TROLLEYS.

PRO-BEL SUB ASSEMBLY MODEL #FA-4DW622-08

- ADAPTOR FULL ASSEMBLY: 200 SERIES DAVIT ADAPTOR FOR 600 SERIES FLAT DAVIT BASE (8'-6" MAX. REACH)



IMPORTANT STRUCTURAL NOTE:

ENGINEER OF RECORD FOR THE OVERALL PROJECT IS RESPONSIBLE FOR DESIGN OF THE BUILDING STRUCTURE, AND LOCAL REINFORCEMENT WHERE REQUIRED, TO WITHSTAND THE APPLIED LOADS OF THE SAFETY EQUIPMENT SUPPLIED BY PRO-BEL.

ALL DAVIT SYSTEMS MAY BE SUBJECTED TO STATIC LOAD TEST, BASED ON SITE CONDITIONS, APPROPRIATE TESTING METHODS AND TEST LOADS WILL BE USED TO IMPOSE EQUIVALENT LOADS AND MOMENTS ON THE STRUCTURE AND ITS CONNECTION AS GENERATED BY A 2500LBS STATIC LOAD AT MAXIMUM HEIGHT. ENSURE THE STRUCTURE IS DESIGNED TO RESIST THE ULTIMATE LOAD AND DOES NOT SHOW DISTRESS AND PERMANENT DEFORMATION AT TEST LOADS.

5 3.01 A100 DAVIT ARM DETAIL (REF: 3) SCALE: 1 1/2"=1'-0" 4'-0" TALL MAST & 6'-6" REACH

GENERAL NOTES - SEE SHEET 1.01

THE ENGINEER'S SEAL INDICATES ONLY THAT THE STRUCTURAL COMPONENTS SUPPLIED BY PRO-BEL:  
a) WILL RESIST THE LOADS INDICATED ON THIS DRAWING AND MODELED BY STRUCTURAL ANALYSIS, OR  
b) HAVE BEEN LAB TESTED FOR THE LOADS INDICATED.

THIS DRAWING IS ON LOAN ONLY AND THE EQUIPMENT IS CONSIDERED CERTIFIED PROVIDED ANNUAL INSPECTIONS ARE PERFORMED IN ACCORDANCE WITH PRO-BEL LOG BOOK REQUIREMENTS.

THE CONTRACTOR MUST VERIFY ALL DIMENSIONS.

ANY DEVIATION FROM THIS DRAWING MUST BE REPORTED TO PRO-BEL ENTERPRISES LIMITED.

THIS DRAWING MUST NOT BE USED FOR CONSTRUCTION UNTIL IT IS APPROVED.

PRO-BEL ENTERPRISES LIMITED  
765 WESLEY ROAD SOUTH  
AUX. ONTARIO, CANADA L1S 6M1  
(416) 953-427-9016, Fax (905) 427-2545  
Toll Free 1 (800) 461-0575  
Web: www.pro-belgroup.com  
E-Mail: info@pro-bel.ca

CLIENT: BRASFIELD & GORRIE, LLC  
PROJECT: NGMC GAINESVILLE CLINICAL EXPANSION (FORMERLY) NGHS NORTH TOWER 2  
743 SPRING ST NE  
GAINESVILLE, GA 30501

PROJECT SCOPE: SUPPLY & INSTALL (CABLE ONLY) w/ SITE LOAD TESTING

MM/DD/YYYY: 10/12/2022	TECH. REVIEW		
SCALE: AS INDICATED	SALES	PM	ENG/SLP
DRAWN BY: BEN	MG	CD	

TITLE: WINDOW CLEANING, FALL PROTECTION, FACADE MAINT. SAFETY EQUIPMENT DETAILS

SHEET NO. 3.01 REV. NO. 0

IMPORTANT STRUCTURAL NOTE:  
ENGINEER OF RECORD FOR THE OVERALL PROJECT IS RESPONSIBLE FOR DESIGN OF THE BUILDING STRUCTURE, AND LOCAL REINFORCEMENT WHERE REQUIRED, TO WITHSTAND THE APPLIED LOADS OF THE SAFETY EQUIPMENT SUPPLIED BY PRO-BEL.

SPECIAL INSPECTION NOTE:  
SPECIAL INSPECTION OF ALL CAST IN PLACE AND WELDED CONNECTION ARE RESPONSIBILITY OF OTHERS AND SHOULD BE CONSIDERED.  
DOCUMENTED EVIDENCE OF SUCH INSPECTION SHALL BE MADE AVAILABLE TO PRO-BEL.

NO.	REVISION	BY	CHKD	MM/DD/YYYY
1				



**PRO-BEL HLL NON-HANDS FREE (DOUBLE LANYARD) SYSTEM  
MODEL #FA-HLL-DL-FBI**

**PRO-BEL HLL END CONNECTION (FIELD APPLIED)  
MODEL #FA-HLL-END-2**

- PART MODEL #P-THIMBLE-SS**  
1. STAINLESS STEEL THIMBLE (1X)
- PART MODEL #P-OVAL-SLWDS**  
2. ALUMINUM SPACER OVAL SLEEVE - LOOSE (1X)
- PART MODEL #P-FGRIP-N**  
3. GALVANIZED STEEL FIST GRIP CLIP (3X)
- PART MODEL #P-HS-HLL**  
4. 1 1/2" LG. HEAT SHRINK (1X)
- PART MODEL #P-PR-N-SH-N**  
5. "PRO-SHOCK" - PRO-BEL IN LINE SHOCK ABSORBER (1X)

**PRO-BEL HLL END CONNECTION (FACTORY APPLIED & TESTED)  
MODEL #FA-HLL-END-1**

- PART MODEL #P-THIMBLE-SS**  
1. STAINLESS STEEL THIMBLE (1X)
- PART MODEL #P-TURNBUCKLE-SS**  
6. STAINLESS STEEL 5/8" JAW TURNBUCKLE (1X)
- PART MODEL #P-NICO-DI**  
7. NICO SWEDGE (1X)
- PART MODEL #P-HLL-CPI2200-N**  
8. HLL CAPACITY PLATE PUNCHED WITH CURRENT DATE, 2 USERS MAXIMUM CAPACITY AND PROJECT #. (1X)

**ADDITIONAL HLL COMPONENTS**

- PART MODEL #P-HSSC7X19-001** - SEE CHART  
9. 5/16" (7X19) STAINLESS STEEL FLEXIBLE CABLE.

**FALL ARREST - INSTRUCTION FOR SAFE USE OF HLL SYSTEM**

- AUTHORIZED WORKERS SHOULD ENSURE THAT THE LANYARD IS APPROXIMATELY PERPENDICULAR TO THE HLL LINE AT ALL TIMES.
- CAPACITY - MAXIMUM 2 WORKERS.
- AUTHORIZED WORKERS MUST USE AN AUXILIARY BYPASS LANYARD TO ALLOW THEMSELVES TO REMAIN CONTINUOUSLY TIED-OFF WHILE BYPASSING AN INTERMEDIATE ANCHOR.
- AUTHORIZED WORKERS MUST NOT USE THE HLL LINE TO SECURE PRIMARY RIGGING EQUIPMENT OR FOR DIRECT RIGGING.
- AUTHORIZED WORKERS SHALL ARRANGE THEIR LIFELINES IN SUCH A WAY TO ENSURE THAT THEY CANNOT FALL MORE THAN 6'-0" VERTICAL FREE FALL, OR STRIKE LOWER ROOF LEVELS OR BUILDING WHEN USING HLL SYSTEM.
- YIELDING OF THE EQUIPMENT AND/OR SUPPORTING STRUCTURE MAY OCCUR IN THE EVENT OF A FALL ARREST INCIDENT. WHEN THE EQUIPMENT HAS BEEN IMPACTED BY FALL ARREST LOADING OR IF THE SHOCK ABSORBER INDICATES IT HAS BEEN DEPLOYED, A THOROUGH INSPECTION OF PRO-BEL EQUIPMENT AND THE SUPPORTING STRUCTURE IS TO BE CONDUCTED, AND ANY DAMAGED COMPONENT MUST BE REPAIRED OR REPLACED, UNDER THE DIRECTION BY PRO-BEL'S PROFESSIONAL ENGINEER.

**IMPORTANT NOTE:**

END ANCHORS MUST BE INSTALLED WITH 1/2" BAR POSITIONED PARALLEL TO CABLE DIRECTION. (TYPICAL)

**IMPORTANT NOTE:**

INTERMEDIATE ANCHORS MUST BE INSTALLED WITH 1/2" BAR POSITIONED PERPENDICULAR TO CABLE DIRECTION. (TYPICAL)

**IMPORTANT NOTE:**

CORNER ANCHORS MUST BE INSTALLED WITH 1/2" BAR POSITIONED PERPENDICULAR TO CABLE DIRECTION. (TYPICAL)

**HLL CABLE LENGTH CHART**

HLL #	ACTUAL LENGTH	ORDER LENGTH (+15 FT EACH)
#1	68 FT	83 FT
#2	40 FT	55 FT
#3	188 FT	203 FT
#4	181 FT	196 FT
#5	167 FT	182 FT
#6	116 FT	131 FT
#7	226 FT	241 FT
#8	226 FT	241 FT
#9	191 FT	206 FT
#10	95 FT	110 FT
#11	79 FT	94 FT
#12	35 FT	50 FT
TOTAL CABLE LENGTH		1792 FT

**IMPORTANT NOTE:**

WORKERS MUST USE A SHOCK ABSORBING LANYARD RATED FOR 900 lbs. MAXIMUM ARREST FORCE.

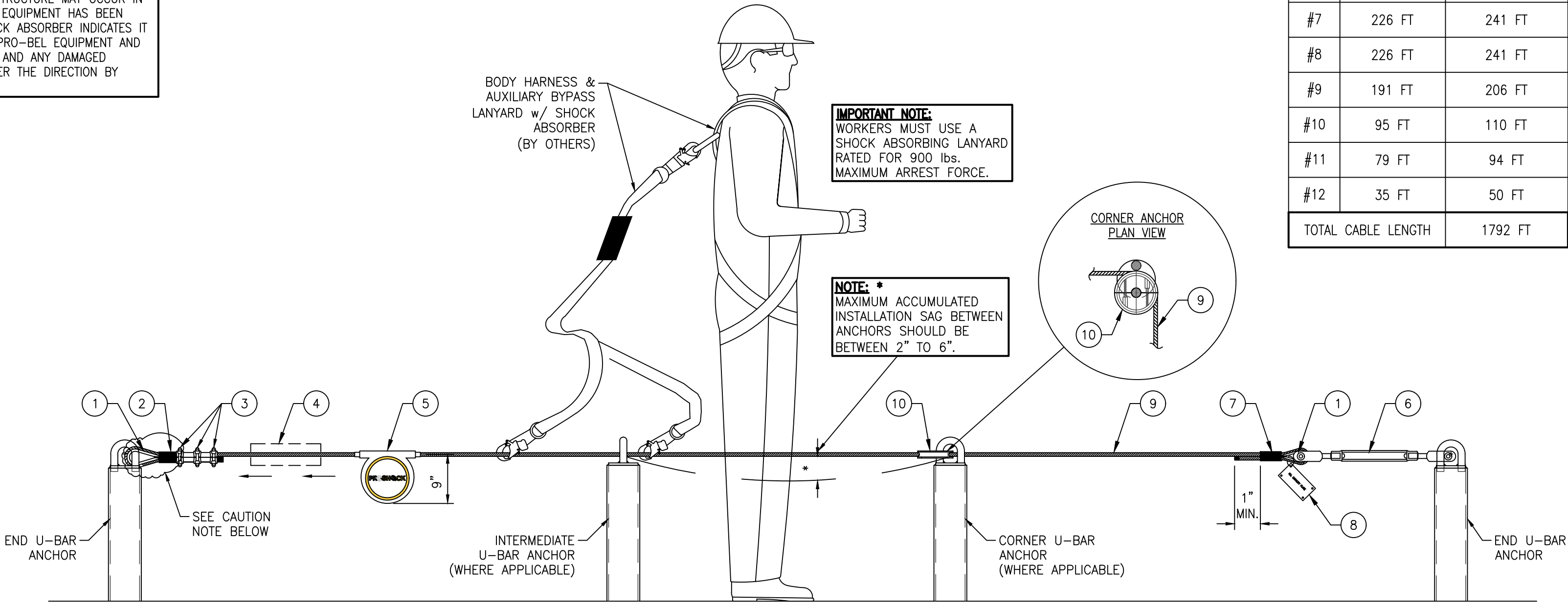
**NOTE:**

MAXIMUM ACCUMULATED INSTALLATION SAG BETWEEN ANCHORS SHOULD BE BETWEEN 2" TO 6".

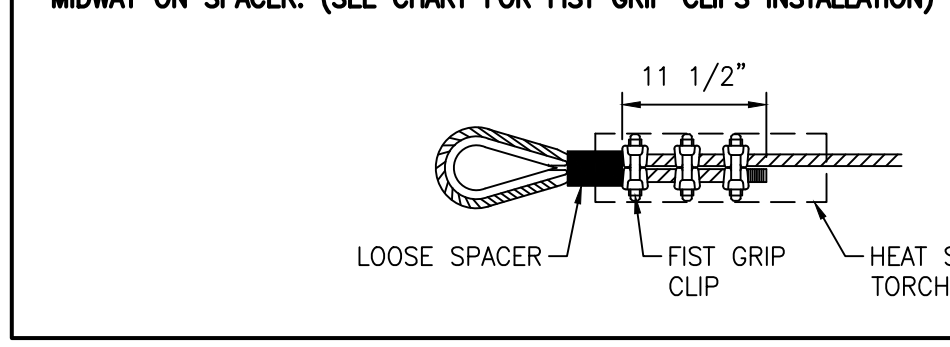
**NOTED:** S.S. TURNBUCKLE TO BE INSTALLED IN THE FIELD.

**CAUTION:** THIS HLL END CONNECTION NEEDS TO BE FACTORY TESTED. NICO SWEDGE TO BE TESTED TO 5,000 LBS.

**HLL END CONNECTION #1 (FACTORY APPLIED & TESTED)**



**CAUTION:** INSTALL FIRST FIST GRIP CLIP UP HAND AGAINST LOOSE SPACER TO ALLOW FOR HEAT SHRINK TO SIT MIDWAY ON SPACER. (SEE CHART FOR FIST GRIP CLIPS INSTALLATION)

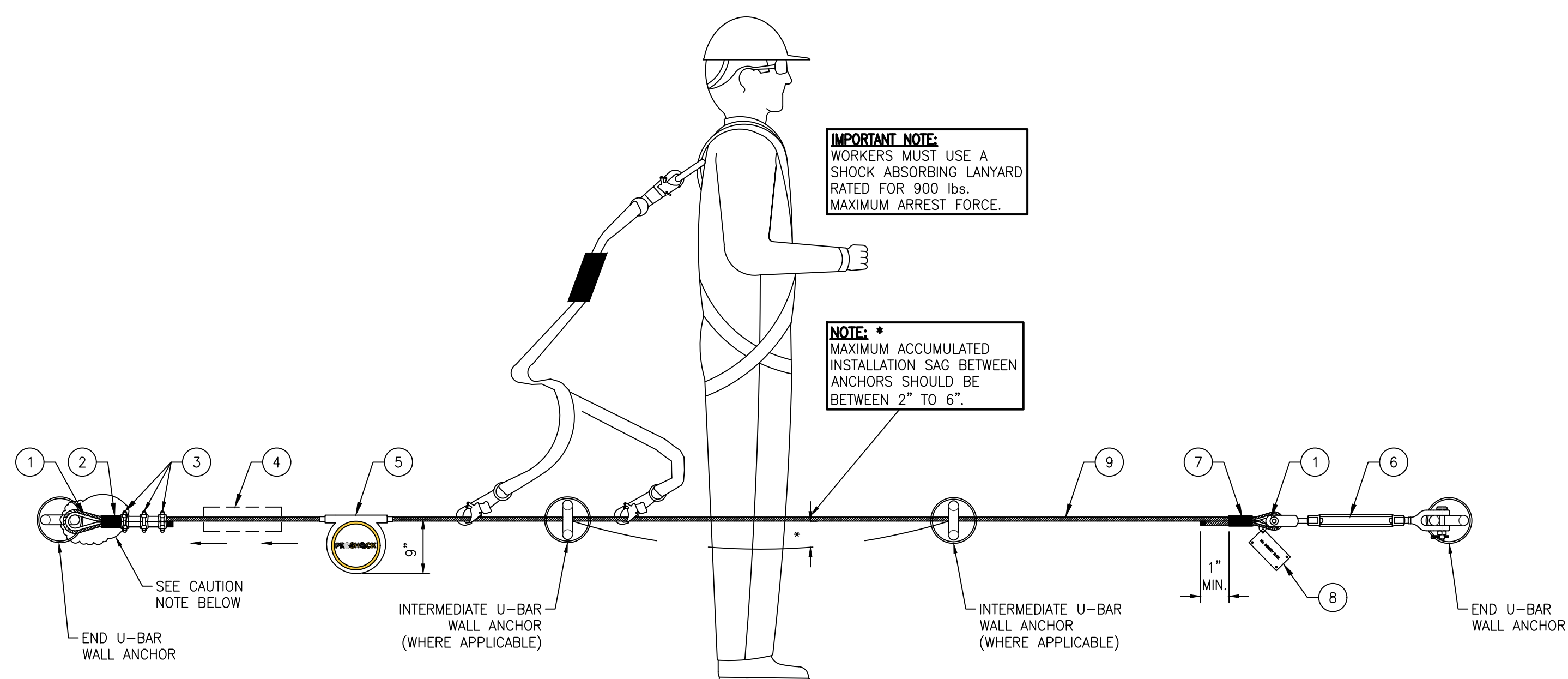


**HLL END CONNECTION #2 (FIELD APPLIED)**

3.02

**NON-HANDS FREE (DOUBLE LANYARD) HLL SYSTEM - FALL ARREST SYSTEM**  
SCALE: N.T.S.

**NOTE:** APPLY GREASE ON THE CABLE BEFORE INSERTING IT THROUGH THE SHOCK ABSORBER DURING INSTALLATION ON SITE.



**IMPORTANT NOTE:**

WORKERS MUST USE A SHOCK ABSORBING LANYARD RATED FOR 900 lbs. MAXIMUM ARREST FORCE.

**NOTE:**

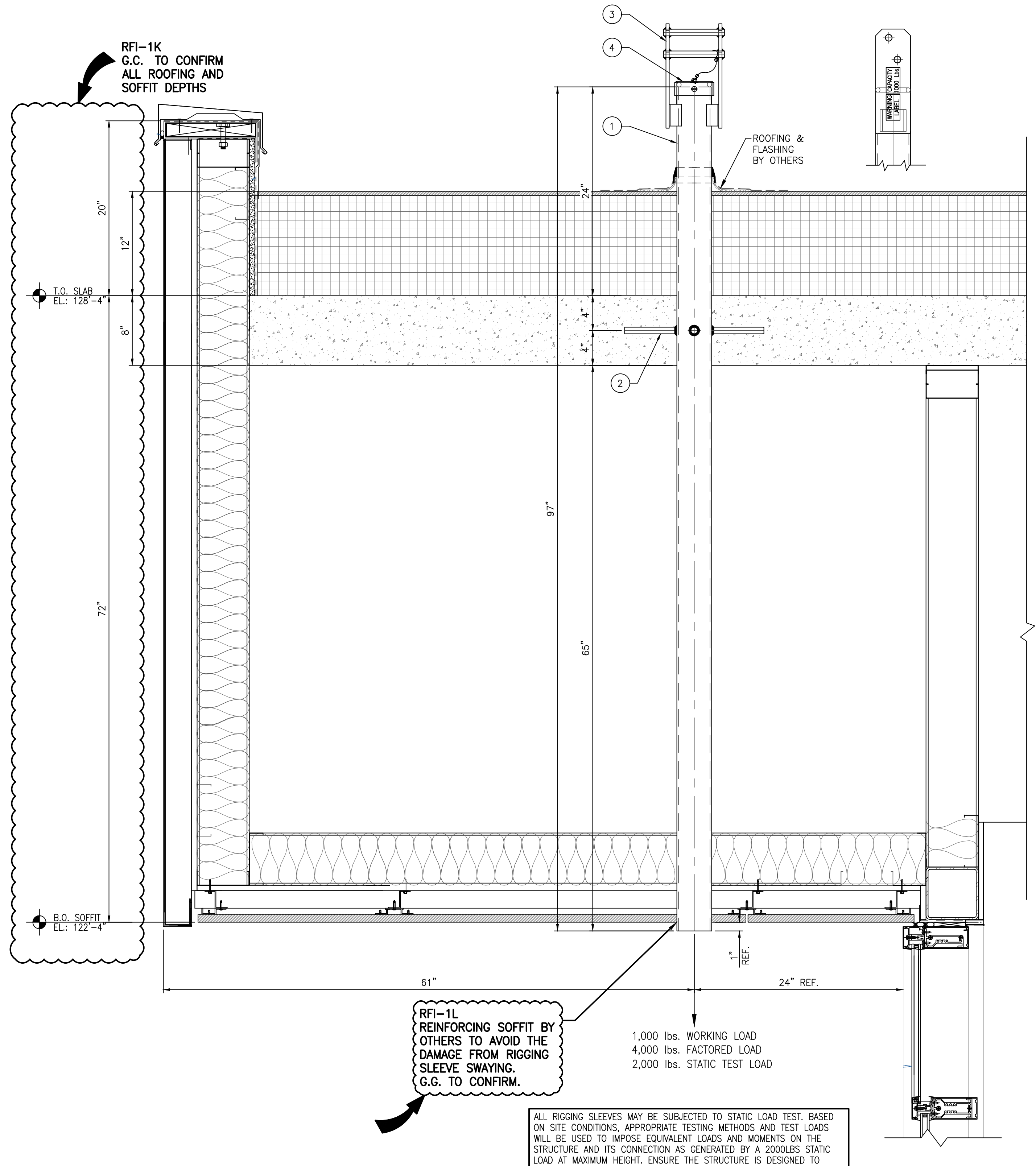
MAXIMUM ACCUMULATED INSTALLATION SAG BETWEEN ANCHORS SHOULD BE BETWEEN 2" TO 6".

**IMPORTANT STRUCTURAL NOTE:**  
ENGINEER OF RECORD FOR THE OVERALL PROJECT IS RESPONSIBLE FOR DESIGN OF THE BUILDING STRUCTURE, AND LOCAL REINFORCEMENT WHERE REQUIRED, TO WITHSTAND THE APPLIED LOADS OF THE SAFETY EQUIPMENT SUPPLIED BY PRO-BEL.

**SPECIAL INSPECTION NOTE:**  
SPECIAL INSPECTION OF ALL CAST IN PLACE AND WELDED CONNECTION ARE RESPONSIBILITY OF OTHERS AND SHOULD BE CONSIDERED. DOCUMENTED EVIDENCE OF SUCH INSPECTION SHALL BE MADE AVAILABLE TO PRO-BEL.

**PRO-BEL FULL ASSEMBLY MODEL #CUSTOM-2**

- 4" GALVANIZED STEEL HSS.
- GALVANIZED STEEL CASTING LUGS (4x).
- RIGGING SLEEVE HEAD W/ 2- 3/4" STAINLESS STEEL ROUND BARS.
- END CAP 1/4" TETHER.



**RFI-1L REINFORCING SLEEVE BY OTHERS TO AVOID DAMAGE FROM RIGGING SLEEVE SWAYING. G.G. TO CONFIRM.**

1,000 lbs. WORKING LOAD  
4,000 lbs. FACTORED LOAD  
2,000 lbs. STATIC TEST LOAD

ALL RIGGING SLEEVES MAY BE SUBJECTED TO STATIC LOAD TEST, BASED ON SITE CONDITIONS, APPROPRIATE TESTING METHODS AND TEST LOADS WILL BE USED TO IMPOSE EQUIVALENT LOADS AND MOMENTS ON THE STRUCTURE AND ITS CONNECTION AS GENERATED BY A 2000LBS STATIC LOAD AT MAXIMUM HEIGHT. ENSURE THE STRUCTURE IS DESIGNED TO RESIST THE ULTIMATE LOAD AND DOES NOT SHOW DISTRESS AND PERMANENT DEFORMATION AT TEST LOADS.

3.02

**97" CAST IN VERTICAL RIGGING SLEEVE DETAIL**  
SCALE: 1 1/2"=1'-0"

**GENERAL NOTES - SEE SHEET 1.01**

THE ENGINEER'S SEAL INDICATES ONLY THAT THE STRUCTURE COMPONENTS SUPPLIED BY PRO-BEL:

- WILL RESIST THE LOADS INDICATED ON THIS DRAWING WHEN INSTALLED BY QUALIFIED STRUCTURAL TECHNICIANS, OR
- HAVE BEEN LAB TESTED FOR THE LOADS INDICATED.

THIS DRAWING IS ON LOAN ONLY AND THE EQUIPMENT IS CONSIDERED CERTIFIED PROVIDING ANNUAL INSPECTIONS ARE PERFORMED IN ACCORDANCE WITH PRO-BEL LOG BOOK REQUIREMENTS.

THE CONTRACTOR MUST VERIFY ALL DIMENSIONS.

ANY DEVIATION FROM THIS DRAWING MUST BE REPORTED TO PRO-BEL ENTERPRISES LIMITED.

THIS DRAWING MUST NOT BE USED FOR CONSTRUCTION UNTIL IT IS APPROVED.

PRO-BEL ENTERPRISES LIMITED  
765 WESTNEY ROAD SOUTH  
AURORA, ONTARIO, CANADA L1S 6M1  
Tel: (905) 427-0616, Fax: (905) 427-2545  
Toll Free: 1 (800) 461-0575  
Web: www.pro-belgroup.com  
E-Mail: info@pro-bel.ca

CLIENT: BRASFIELD & GORRIE, LLC  
PROJECT: NGMC GAINESVILLE CLINICAL EXPANSION (FORMERLY) NGHS NORTH TOWER 2  
743 SPRING ST NE  
GAINESVILLE, GA 30501

PROJECT SCOPE: SUPPLY & INSTALL (CABLE ONLY) w/ SITE LOAD TESTING

MM/DD/YYYY: 10/12/2022	TECH. REVIEW	
SCALE: AS INDICATED	SALES	PM
DRAWN BY: EN	MG	CD

TITLE: WINDOW CLEANING, FALL PROTECTION, FACADE MAINT. SAFETY EQUIPMENT DETAILS

PROJ. NO. 1N1-2022-40059 SHEET NO. 3.02 REV. NO. 0

NO.	REVISION	BY	CHKD	MM/DD/YYYY