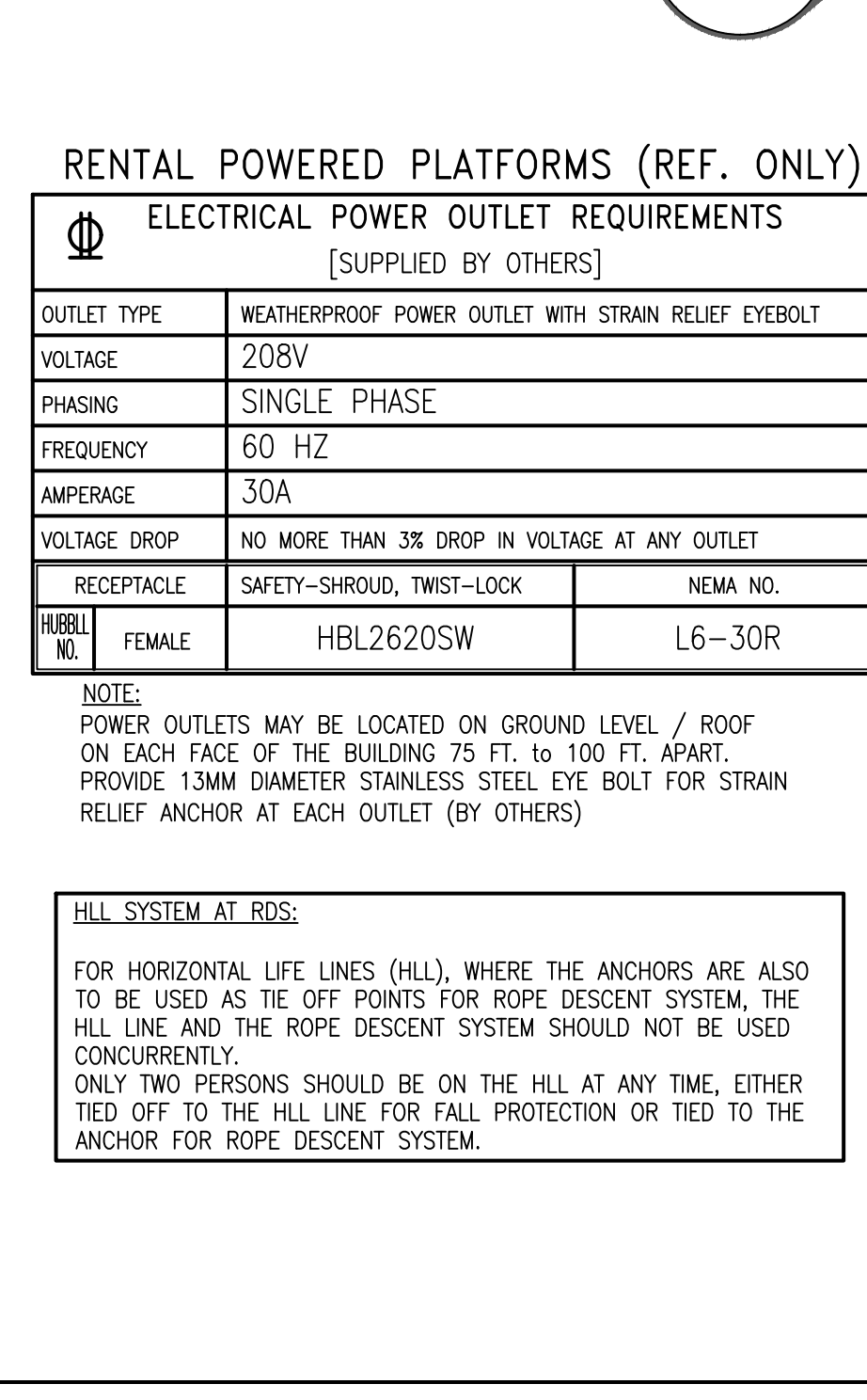


- GENERAL NOTES:**
- PRO-BEL EQUIPMENT IS DESIGNED TO FEDERAL OSHA - GENERAL INDUSTRY - REGULATION (STANDARDS-29 CFR) UNDER PART 1910; OCCUPATIONAL SAFETY AND HEALTH STANDARDS:
 - 1910.28-DUTY TO HAVE FALL PROTECTION AND FALLING OBJECT PROTECTION.
 - 1910.29-FALL PROTECTION SYSTEMS AND FALLING OBJECT PROTECTION-CRITERIA AND PRACTICES
 - 1910 SUBPART I - PERSONAL PROTECTIVE EQUIPMENT
 - 1910.140 - PERSONAL FALL PROTECTION SYSTEMS
 - PRO-BEL IS TO BE NOTIFIED OF ALL CHANGES TO AND/OR DEVIATIONS FROM THIS DRAWING.
 - GENERAL CONTRACTOR/ARCHITECT/CONSULTANT/CLIENT TO VERIFY THAT PRO-BEL EQUIPMENT LOCATIONS DO NOT CONFLICT WITH DOORWAYS, ROOF DRAINS, VENT PIPES, MECHANICAL UNITS ETC. THE PORTIONS OF BUILDING STRUCTURE THAT SUPPORT PRO-BEL EQUIPMENT SHALL BE VERIFIED BY THE PROJECT STRUCTURAL ENGINEER/ARCHITECT FOR THE RESULTING FORCES AND MOMENTS DUE TO THE LOADS SHOWN ON PRO-BEL SHOP DRAWINGS.
 - REINFORCING OF BUILDING STRUCTURE BY OTHERS AS REQUIRED BY PRO-BEL EQUIPMENT.
 - EVERY MAN OR WORKING ROOF LEVEL MUST HAVE DIRECT ACCESS TO THE INTERIOR OF THE BUILDING.
 - CLIENT/GENERAL CONTRACTOR TO PROVIDE PAVERS/CONCRETE RUNWAY FOR TRANSPORTATION OF PLATFORMS/DAVITS/OTHER WINDOW WASHING EQUIPMENT AS REQUIRED.
 - FOR GROUND RIGGED APPLICATIONS, CLIENT/GENERAL CONTRACTOR TO PROVIDE ACCESS TO TRANSPORT PLATFORMS/DAVITS/OTHER WINDOW WASHING EQUIPMENT (AS REQUIRED) AROUND BUILDING.
 - LIGHTNING RODS ON PARAPETS MUST BE OF TIP-OVER (FLEXIBLE) TYPE SECURED WITH TETHERS.
 - THE SAFETY ANCHOR HAS BEEN TESTED TO ENSURE THAT FRACTURE OR DETACHMENT DOES NOT OCCUR WITH A 2.22 kN (500 LB) LOAD.
 - THE WORKING LOAD OF THE SAFETY ANCHORS IS 4.45 kN (1,000 LB).
 - THE FALL ARREST LOAD OF THE HLL ANCHORS IS 2,200 LB.

- INSTALLATION OF HORIZONTAL LIFELINES, STATIC LINES AND/OR DOG LINES BETWEEN ANCHORS/DAVITS WITHOUT PRIOR WRITTEN APPROVAL FROM PRO-BEL IS STRICTLY PROHIBITED AND WILL RESULT IN THE MANUFACTURER'S WARRANTY BECOMING NULL AND VOID AND THE RELIANT PRODUCT LIABILITY INSURANCE BEING CANCELLED.
 - AREAS FROM WHERE PLATFORM/SINGLE MAN CAGE IS ORIGINALLY RIGGED MUST BE FREE OF ANY OBSTRUCTIONS AND LEVELLED (MINIMUM 6'-0" WIDE). BY OTHERS.
 - WEATHERPROOF ELECTRICAL OUTLET (1/4" POWER CORD RESTRAINT ANCHOR AS REQUIRED; BY OTHERS).
 - WEATHERPROOF WATER HOSE SIB AS REQUIRED; BY OTHERS.
 - INTERMITTENT STABILIZATION ANCHORS/SQUIDE TRACKS FOR STABILIZATION OF THE PLATFORM AS REQUIRED; BY OTHERS.
- MATERIALS:**
- ALL STRUCTURAL STEEL IS DESIGNED AS PER AISC SPECIFICATIONS.
 - ALL HOLLOW STRUCTURAL SECTIONS CONFORM TO ASTM A500 OR EQUIVALENT CAN/CSA-G40.20/G40.21.
 - ALL STEEL PLATE AND OTHER SECTIONS CONFORM TO ASTM A36 OR EQUIVALENT CAN/CSA-G40.20/G40.21.
 - STAINLESS STEEL - TYPE 304/316.
 - ALUMINUM SECTIONS - ALLOY 6061-T6, DESIGNED AS PER SPECIFICATIONS FOR ALUMINUM STRUCTURES PUBLISHED BY THE ALUMINUM ASSOCIATION.
- INSTALLATION:**
- EQUIPMENT IS TO BE SUPPLIED BY PRO-BEL AND INSTALLED BY OTHERS.
 - ROOFING IN OF PRO-BEL EQUIPMENT IS TO BE BY OTHERS.
 - CAST-IN BOLTS, CAGES, AND FULLY EMBEDDED EQUIPMENT ARE TO BE SUPPLIED BY OTHERS AND INSTALLED BY OTHERS. PRO-BEL IS TO BE NOTIFIED IF THE POSITION OR DETAILS OF THE CAST-IN ITEMS DEVIATE FROM THIS DRAWING.
 - STABILIZATION BUTTONS ARE TO BE SUPPLIED BY PRO-BEL AND INSTALLED BY OTHERS. PRO-BEL IS TO BE NOTIFIED IF THE POSITION OR DETAILS OF THE STABILIZATION BUTTONS DEVIATE FROM THIS DRAWING.
- INSPECTIONS:**
- PRO-BEL EQUIPMENT SHOULD BE VISUALLY INSPECTED BEFORE EACH SCHEDULED SERVICE CYCLE AND NOT LESS THAN ONCE A YEAR FOR ANY OR DETACHMENT FROM THE BUILDING OR ANY OTHER VISUAL DEFECT WHICH WOULD COMPROMISE THE INTEGRITY OF THE EQUIPMENT.
 - ANY FALL ARREST INCIDENT OR INCIDENT (FIRE, LIGHTNING ETC) INVOLVING USE OF PRO-BEL EQUIPMENT OR IN THE NEAR VICINITY OF PRO-BEL EQUIPMENT, SHOULD BE REPORTED TO PRO-BEL, ENABLING

- PRO-BEL OR ITS AUTHORIZED REPRESENTATIVE TO PERFORM A THROUGH INSPECTION.
 - ANY SUSPECTED DAMAGE OR COMPROMISED EQUIPMENT WOULD REQUIRE CORRECTIVE ACTION THAT NEEDS TO BE TAKEN UNDER THE DIRECTION OF PRO-BEL'S PROFESSIONAL ENGINEER OF RECORD.
 - NO ALTERATION OR MODIFICATION OF ANY PRO-BEL EQUIPMENT, ITS CONNECTION OR THE SUPPORTING STRUCTURE IS PERMITTED AS THIS WILL AFFECT THE INTEGRITY / ABILITY OF THE EQUIPMENT TO WITHSTAND THE IMPOSED LOADS. ANY UNAUTHORIZED ALTERATION / MODIFICATION WILL RESULT IN MANUFACTURER'S WARRANTY BECOMING NULL AND VOID AND THE PRODUCT LIABILITY INSURANCE BEING CANCELLED.
 - ANY ALTERATION / MODIFICATION OF PRO-BEL'S EQUIPMENT, ITS CONNECTION OR SUPPORTING STRUCTURE SHOULD ONLY BE UNDERTAKEN WITH THE WRITTEN AUTHORIZATION OF PRO-BEL'S PROFESSIONAL ENGINEER OF RECORD.
- TESTING:**
- IT IS RECOMMENDED ALL INITIAL TESTING AND SUBSEQUENT TESTING FOR RECERTIFICATION, (BASED ON FREQUENCY RECOMMENDED BY PRO-BEL) TO VERIFY THE INTEGRITY OF ALL EQUIPMENT, ITS CONNECTION AND THE SUPPORTING STRUCTURE BE PERFORMED BY PRO-BEL OR ITS AUTHORIZED REPRESENTATIVE.
 - PRO-BEL WILL PROVIDE STAMPED DRAWINGS, TEST REPORTS AND OTHER CERTIFICATIONS BASED ON THESE TESTS AS APPLICABLE.
 - YIELDING OF EQUIPMENT AND / OR SUPPORTING STRUCTURE MAY OCCUR AS A RESULT OF LOAD TESTING. WHEN THIS OCCURS, CORRECTIVE ACTION NEEDS TO BE TAKEN BY PRO-BEL FOR ITS EQUIPMENT OR THE BUILDING STRUCTURAL ENGINEER OF RECORD FOR THE SUPPORTING STRUCTURE.
 - IF ANY INITIAL OR SUBSEQUENT TESTING IS PERFORMED BY CLIENT'S REPRESENTATIVE OR ANY THIRD-PARTY CONTRACTOR, THEN THIS THIRD-PARTY ENTITY WILL BE RESPONSIBLE AND NEED TO PROVIDE STAMPED DRAWINGS, TEST REPORT AND OTHER CERTIFICATIONS AS APPLICABLE.
 - PRO-BEL'S STAMPED DRAWINGS AND OTHER DOCUMENTS WOULD THEN BE CANCELLED AND WOULD BECOME NULL AND VOID.
- USAGE:**
- EQUIPMENT SHOULD NOT BE USED WHEN WIND VELOCITY IS ABOVE 25MPH (40 KM/H) AT GROUND LEVEL.
 - EQUIPMENT SHOULD NOT BE USED DURING ADVERSE WEATHER CONDITIONS THAT WOULD EXPOSE THE OPERATOR OR THE PUBLIC TO ANY INCREASED SAFETY HAZARDS.
 - EQUIPMENT SHOULD BE AT LEAST 10 FT. AWAY FROM HIGH VOLTAGE ELECTRICAL LINES.
 - ALL USERS OF PRO-BEL EQUIPMENT MUST BE PROPERLY TRAINED AND IN POSSESSION OF THE EQUIPMENT SAFETY. USERS MUST COMPLY WITH ALL APPLICABLE SAFETY CODES AND REGULATIONS WHEN USING THIS SYSTEM.

- THIS DRAWING MUST BE READ AND USED IN CONJUNCTION WITH THE OPERATING INSTRUCTIONS DESCRIBED IN THE LOG BOOK SUPPLIED BY PRO-BEL.
 - WORKERS MUST HAVE A WORK PLAN PRIOR TO START OF WORK ON THE TOP ROOF AREA AND OTHER AREAS WHERE WINDOW WASHING EQUIPMENT IS TO BE USED AND ALSO DEMONSTRATE HOW TO RIG SAFELY AS PER THE SAFETY REGULATIONS.
 - WORKERS MUST PROTECT LINES FROM CHAFING AT ALL TIMES.
 - PRO-BEL EQUIPMENT SHALL BE RE-CERTIFIED AT PERIODS NOT TO EXCEED 10 YEARS. THE RE-CERTIFICATION RECORD SHALL BE INCLUDED IN THE BUILDING LOGBOOK. IF AN AREA OF SUSPICION IS IDENTIFIED, A TEST PROCEDURE, IF NECESSARY, SHALL BE PERFORMED UNDER THE DIRECTION OF PRO-BEL'S PROFESSIONAL ENGINEER.
- FALL PROTECTION / ARREST NOTES:**
- WORKERS MUST BE TIED OFF FOR FALL ARREST PRIOR TO APPROACHING, AND REMAIN CONTINUOUSLY TIED OFF WHEN WORKING WITHIN (6'-0") OF ROOF EDGE WHERE PARAPET HEIGHT IS LESS THAN SAFETY RAILING HEIGHT (42" TALL).
 - WORKERS SHALL ARRANGE THEIR LIFE LINES IN SUCH A WAY TO ENSURE THAT THEY CANNOT FALL MORE THAN (6'-0") VERTICAL FREE FALL, OR STRIKE LOWER ROOF LEVELS OR BUILDING WHEN PERFORMING NON-ROUTINE ROOF MAINTENANCE WORK.
- WINDOW CLEANING NOTES:**
- WINDOW CLEANERS (CONTRACTORS) MUST TAKE ADDITIONAL SAFETY MEASURE AND PRECAUTIONS WHILE RIGGING FROM THE BUILDING TO PROTECT THE PUBLIC.
 - BEFORE USING DAVIT ARMS, ALL LOCKS AND PINS MUST BE INSPECTED TO ENSURE THEY ARE IN PLACE, IN GOOD WORKING ORDER, AND PROPERLY ENGAGED.
 - WORKERS MUST AT ALL TIMES BE TIED OFF TO AN ANCHOR OUTSIDE THESE AREAS PRIOR TO APPROACHING AND REMAIN CONTINUOUSLY TIED OFF WHEN WORKING WITHIN THESE AREAS.



PARAPET WALLS, RAILINGS AND ROOF EDGES:

SHALL BE DESIGNED TO PERFORM UNDER THE APPLIED MAXIMUM FALL ARREST LOAD OF 1800 LBS OCCURRING HORIZONTALLY AND 1800 LBS VERTICALLY, SUCH THAT THE STRUCTURE IS NOT DAMAGED OR ENDANGERS THE HEALTH AND SAFETY OF THE WORKER AND/OR THE PUBLIC. THIS IS THE RESPONSIBILITY OF THE STRUCTURAL ENGINEER OF RECORD FOR THE OVERALL PROJECT.

NON-STRUCTURAL RIGGING NOTE:

NON-STRUCTURAL PARAPET WALLS, RAILINGS AND ROOF EDGES SHALL BE RIGGED IN SUCH A MANNER TO AVOID DAMAGING THE BUILDING OR ENDANGERING THE HEALTH AND SAFETY OF THE WORKER AND/OR THE PUBLIC.

PROTECT LINES FROM CHAFING AT ALL TIMES.

IMPORTANT NOTE:

WORKERS MUST USE A SHOCK ABSORBING LANYARD RATED FOR 900 LBS. MAXIMUM ARREST FORCE.

HAZARDOUS AREA NOTE:

ACCESS TO ANY AREA WITHIN 6'-0" OF ROOF EDGE WHERE THE PARAPET WALL/RAILING IS LESS THAN 42" TALL IS RESTRICTED. WORKERS MUST BE TIED OFF TO AN ANCHOR OUTSIDE THESE AREAS PRIOR TO APPROACHING AND REMAIN CONTINUOUSLY TIED OFF WHEN WORKING WITHIN THESE AREAS.

ACCESS TO EQUIPMENT NOTE:

SAFE ACCESS & EGRESS, SUCH AS DOORS, WINDOWS AND ROOF HATCHES TO BE PROVIDED BY OTHERS, IN ORDER TO USE, INSPECT AND CERTIFY EQUIPMENT.

IMPORTANT STRUCTURAL NOTE:

ENGINEER OF RECORD FOR THE OVERALL PROJECT IS RESPONSIBLE FOR DESIGN OF THE BUILDING STRUCTURE, AND LOCAL REINFORCEMENT WHERE REQUIRED, TO WITHSTAND THE APPLIED LOADS OF THE SAFETY EQUIPMENT SUPPLIED BY PRO-BEL.

SPECIAL INSPECTION NOTE:

SPECIAL INSPECTION OF ALL CAST IN PLACE AND WELDED CONNECTION ARE RESPONSIBILITY OF OTHERS AND SHOULD BE CONSIDERED. DOCUMENTED EVIDENCE OF SUCH INSPECTION SHALL BE MADE AVAILABLE TO PRO-BEL.

LIST OF DRAWING SHEETS

SHEET NO.	DRAWING SHEET TITLE
1.01	WINDOW CLEANING SAFETY EQUIPMENT LAYOUT & GENERAL NOTES
2.01	WINDOW CLEANING SAFETY EQUIPMENT ELEVATIONS
3.01	WINDOW CLEANING SAFETY EQUIPMENT DETAILS
3.02	WINDOW CLEANING SAFETY EQUIPMENT DETAILS
3.03	WINDOW CLEANING SAFETY EQUIPMENT DETAILS

PRO-BEL - EQUIPMENT SCHEDULE AND BILL OF MATERIAL

DETAIL NO./ SHEET NO.	SYMBOL	PRODUCT DESCRIPTION	MODEL NO./PART NO.	QTY
1/3.01	ⓐ	CAST-IN RECESSED WALL ANCHOR	FA-PB685-15	18
2/3.01	ⓑ	24" CAST IN FULLY EMBEDDED ROOF ANCHOR	FA-PB27450-2406	34
3A & 3B/3.01	ⓐ	CAST IN EXTENSION STABILIZATION BUTTON	FA-STB-RDX1312-06	380
4/3.01	ⓐ	NON HANDS FREE DOUBLE LANYARD HORIZONTAL LIFE LINE SYSTEM	FA-HLL-DL-PB	1
5/3.01	ⓐ	5/16" (7/16) STAINLESS STEEL FLEXIBLE CABLE -SEE CHART	P-HLL-SS27x19-001	51 FT
5/3.01	ⓐ	CAST IN PLACE RECESSED ROOF ANCHOR	FA-PB70R-06S	7
6/3.01	ⓐ	CAST IN PLACE SOFFIT ANCHOR	FA-PB70ES-06S	7
7A & 7B/3.02	ⓐ	16" CAST-IN EMBED DAVIT BASE W/ U-SBAR	FA-DBE-23208-15	3
8/3.02	ⓐ	20" CAST-IN EMBED DAVIT BASE W/ U-SBAR	FA-DBE-23218-20	3
9/3.02	ⓐ	14" CAST-IN WALL HORIZONTAL RIGGING SLEEVE	CUSTOM-1	7
10A & 10B /3.02	ⓐ	INNER RIGGING SLEEVE	FA-RSH3554-040S	2
		GROUND RIG DAVIT ARM FULL ASSEMBLY (6'-8" TALL MAST, 6'-0" REACH)	CUSTOM-2	2
		ADAPTOR	FA-ADK22-08	2

THESE DRAWINGS HAVE BEEN PREPARED BASED ON INFORMATION FOUND IN THE FOLLOWING:

ARCHITECTURAL	STRUCTURAL
NICHOLS BROOKS WURST WOLFE & ASSOCIATES, INC. 07/26/2021 A416/4417	BUES & WHITMAN, INC. 07/26/2021 S511

THE ENGINEER'S SEAL INDICATES ONLY THAT THE STRUCTURAL COMPONENTS SUPPLIED BY PRO-BEL.

PRO-BEL USA INC.
785 WESTNEY ROAD SOUTH
ALMA, ONTARIO, CANADA L1S 6R1
Tel: (905) 427-9816, Fax: (905) 427-2545
Toll Free: 1 (800) 461-6575
Web: www.pro-belgroup.com
E-Mail: info@pro-bel.com

CLIENT: HILL CREEK RESIDENTIAL TRUST S. FLORIDA CONS., LLC

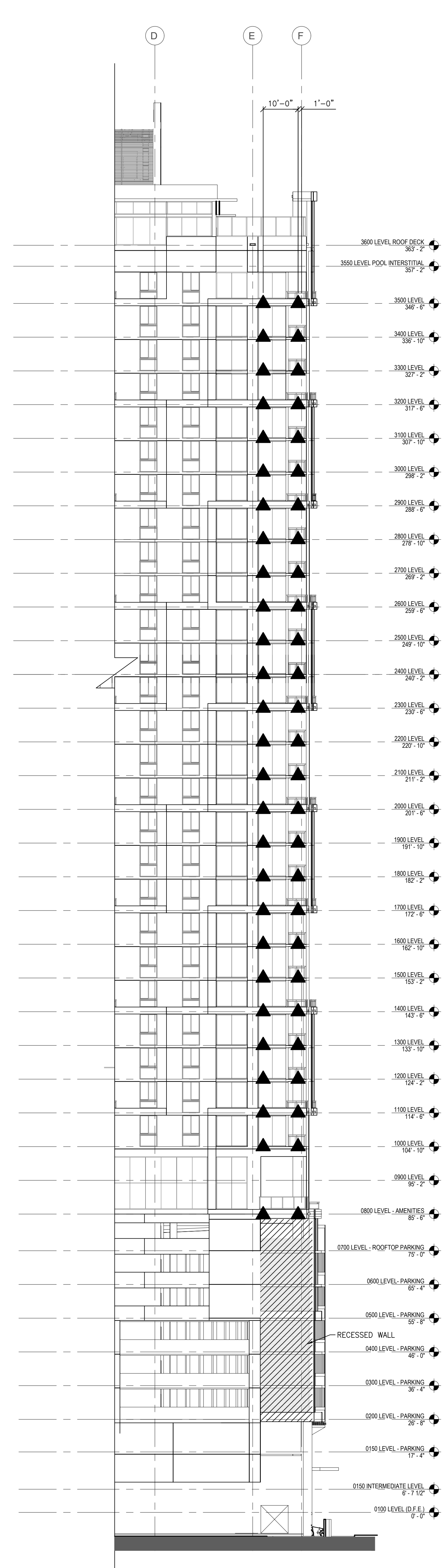
PROJECT: MODERA RIVERSIDE
230 SW 3 ST
MIAMI, FL 33034

PROJECT SCOPE: SUPPLY ONLY w/ SITE LOAD TESTING

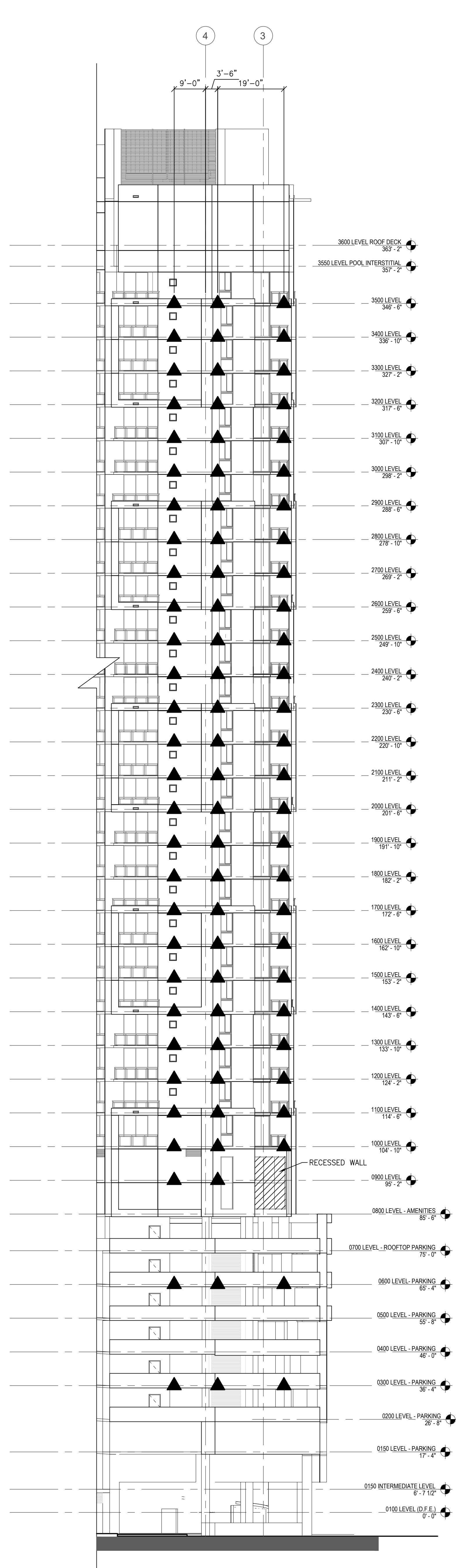
NO.	REVISION	BY	CHKD	MM/DD/YYYY	TECH. REVIEW	DATE

TITLE: WINDOW CLEANING SAFETY EQUIPMENT LAYOUT & GENERAL NOTES

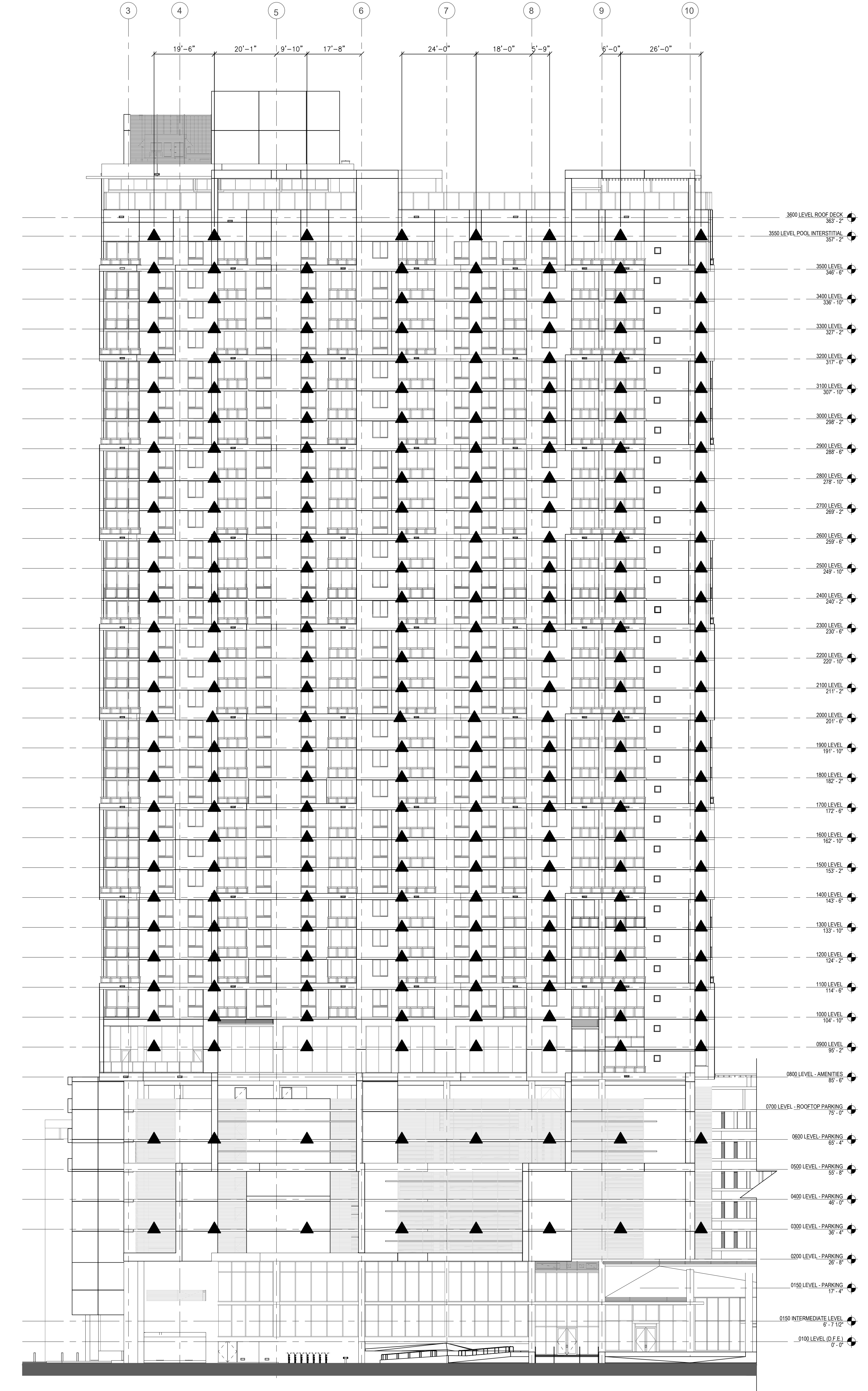
SHEET NO. 1.01 REV. NO. 0



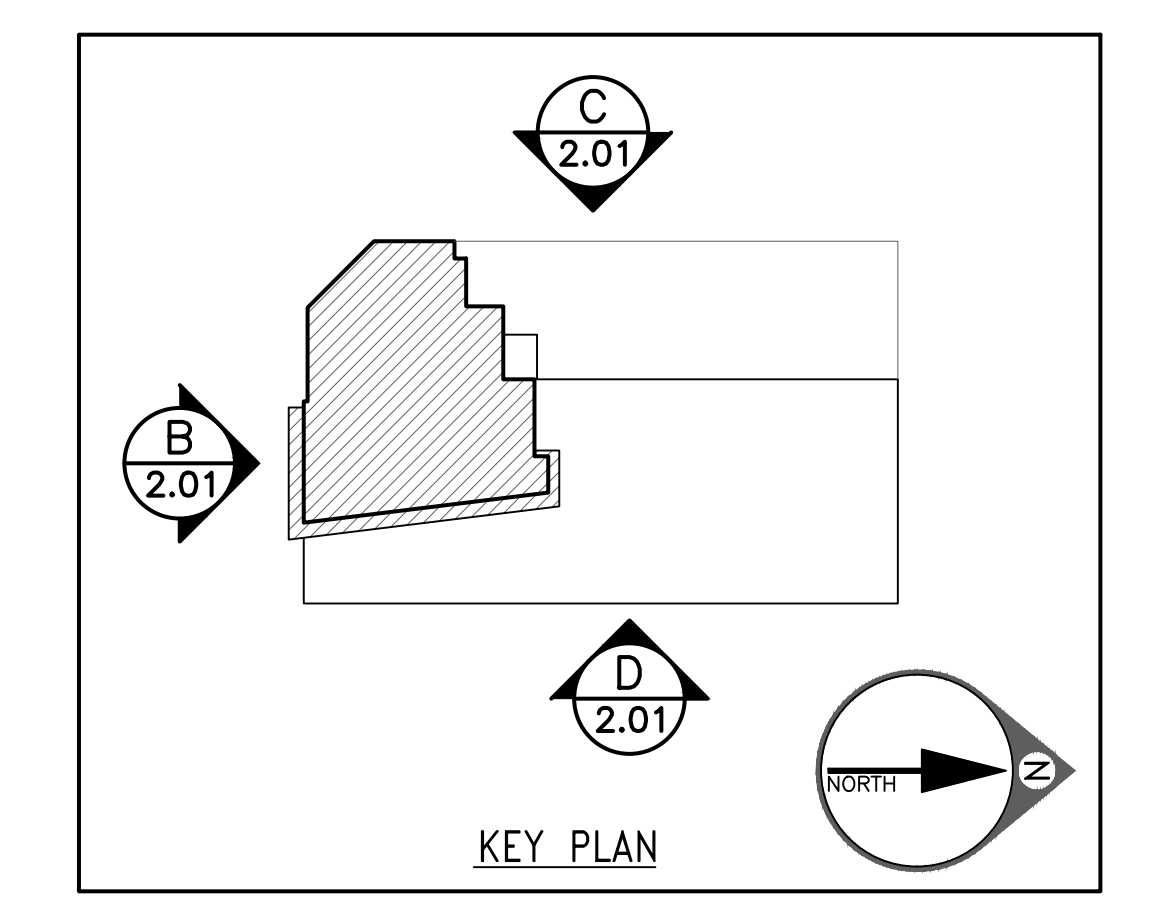
B
2.01 SOUTH ELEVATION STABILIZATION LAYOUT
SCALE: 1/16" = 1'-0"
(REF: A001)



C
2.01 WEST ELEVATION STABILIZATION LAYOUT
SCALE: 1/16" = 1'-0"
(REF: A004/A005)



D
2.01 EAST ELEVATION STABILIZATION LAYOUT
SCALE: 1/16" = 1'-0"
(REF: A002/A003)



GENERAL NOTES - SEE SHEET 1.01

THE ENGINEER'S SEAL INDICATES ONLY THAT THE STRUCTURAL COMPONENTS SUPPLIED BY PRO-BEL.

1) WILL RESIST THE LOADS INDICATED ON THIS DRAWING WHEN ANALYZED BY CONVENTIONAL STRUCTURAL TECHNIQUES OR

2) HAVE BEEN REQUESTED FOR THE LOADS INDICATED.

THIS DRAWING IS ON LOAN ONLY AND THE EQUIPMENT IS CONSIDERED CERTIFIED. PROVISIONS FOR ANNUAL INSPECTIONS ARE PERFORMED IN ACCORDANCE WITH PRO-BEL LOG BOOK REQUIREMENTS.

THE CONTRACTOR MUST VERIFY ALL DIMENSIONS.

ANY DEVIATION FROM THIS DRAWING MUST BE REPORTED TO PRO-BEL ENTERPRISES LIMITED.

THIS DRAWING MUST NOT BE USED FOR CONSTRUCTION UNLESS IT IS APPROVED.

PRO-BEL USA INC.
725 WESLEY ROAD SOUTH
AUXA, ONTARIO, CANADA L1S 6R1
Tel: (905) 427-0816, Fax: (905) 427-2545
Toll Free: 1 (800) 461-6275
Web: www.pro-belgroup.com
E-Mail: info@pro-bel.ca

CLIENT:
WILL CREEK RESIDENTIAL TRUST S. FLORIDA CONS., LLC

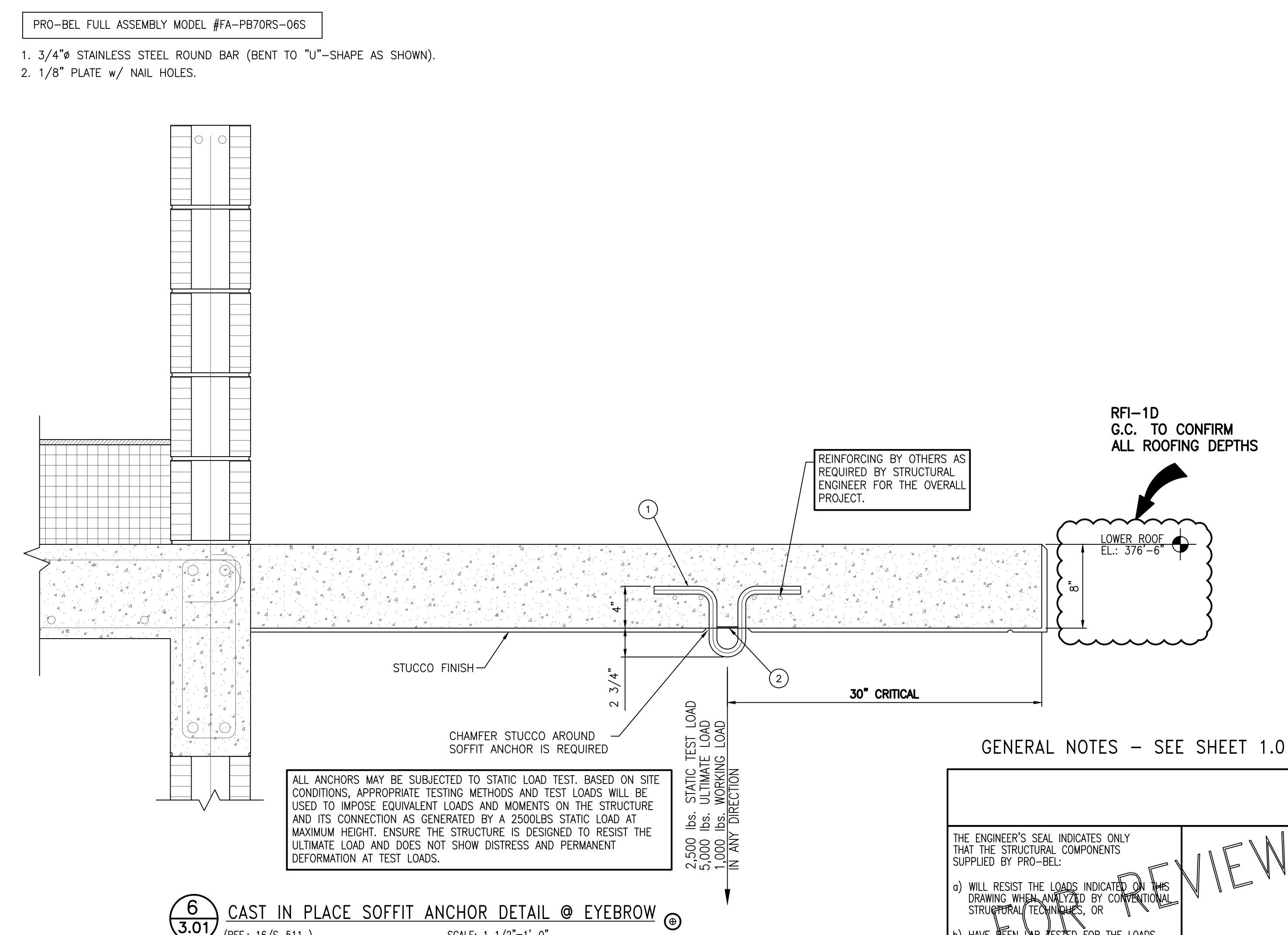
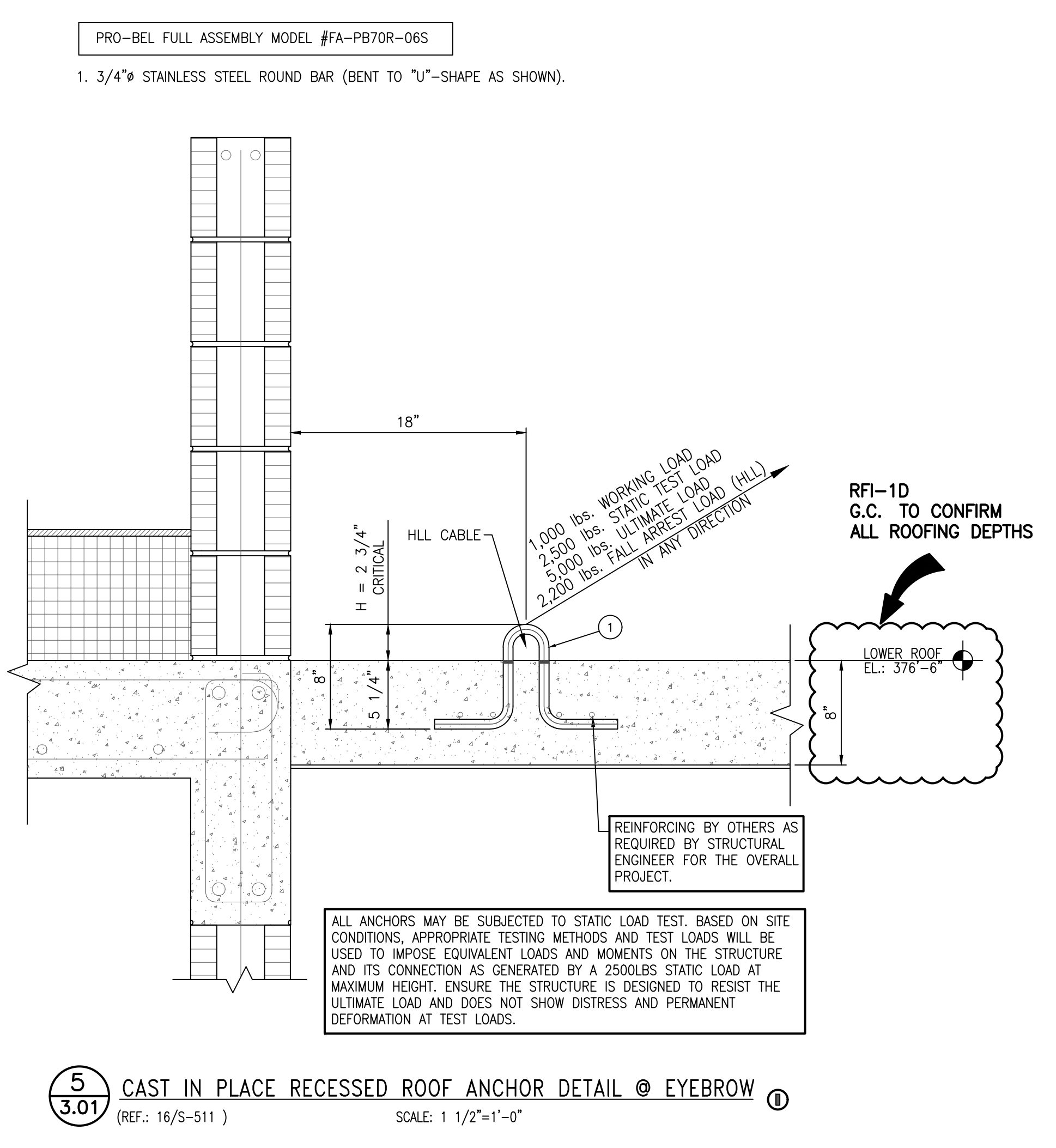
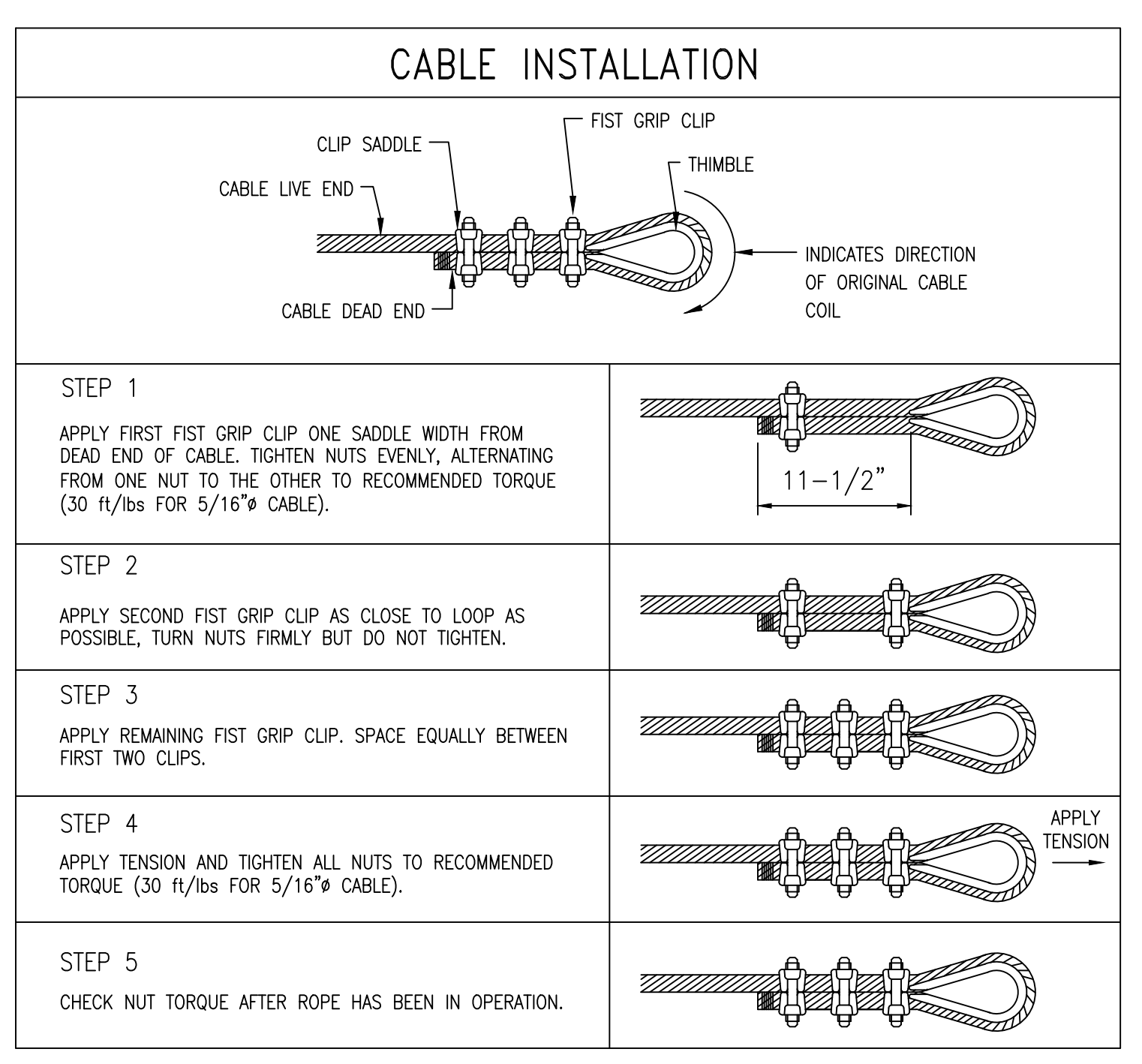
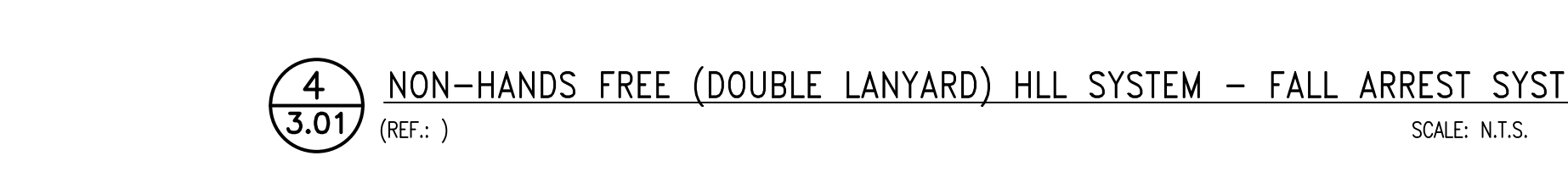
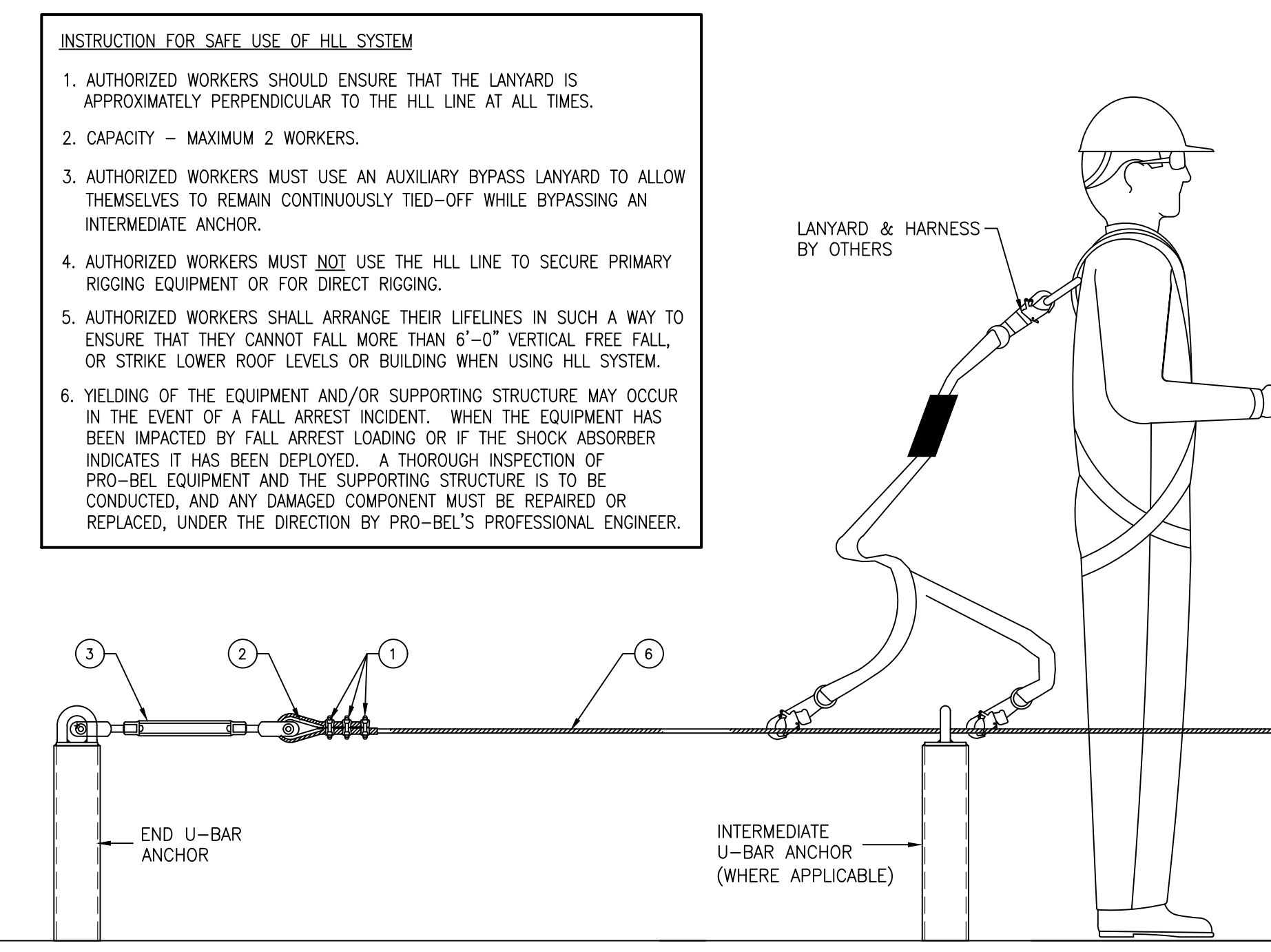
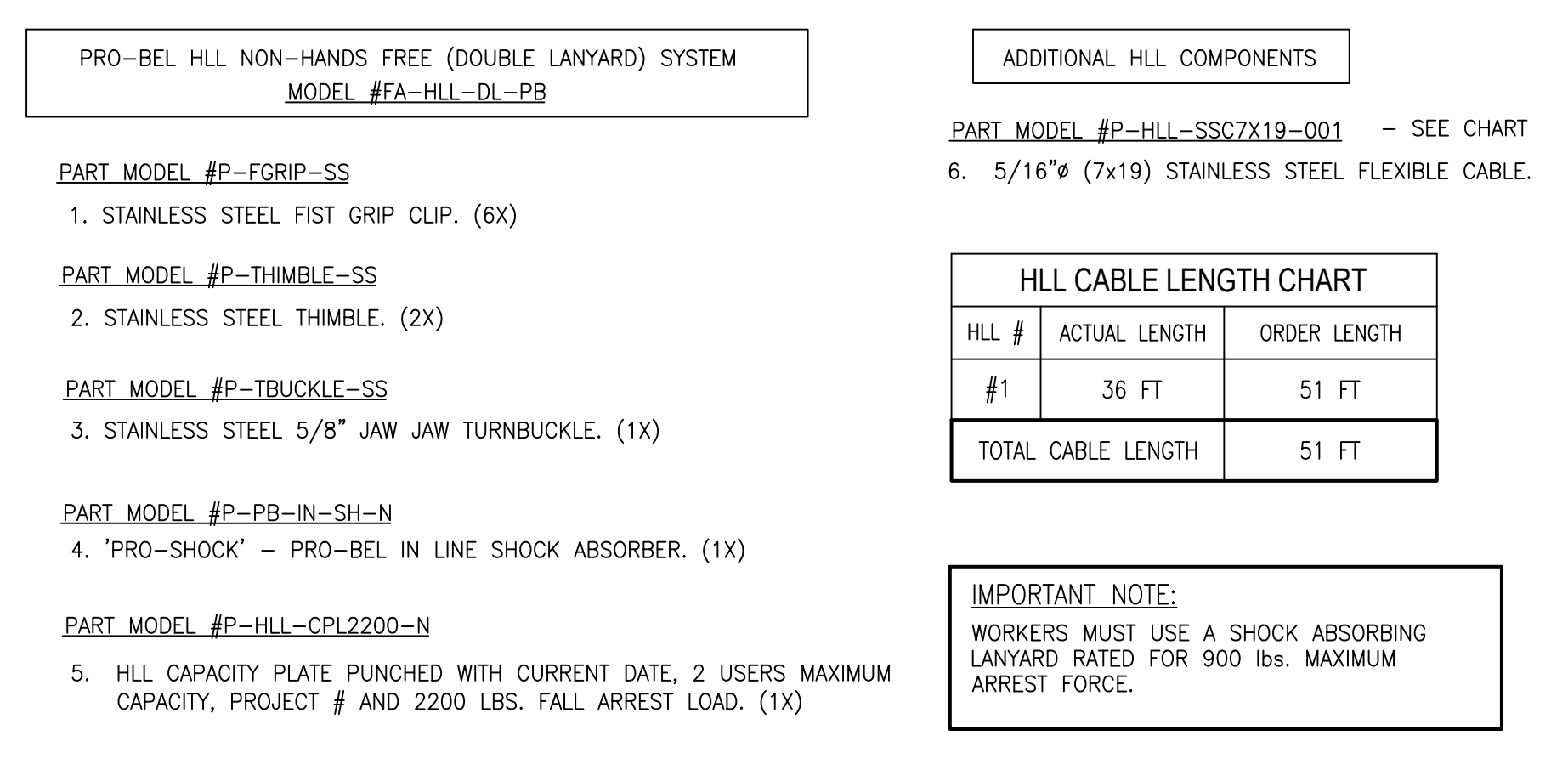
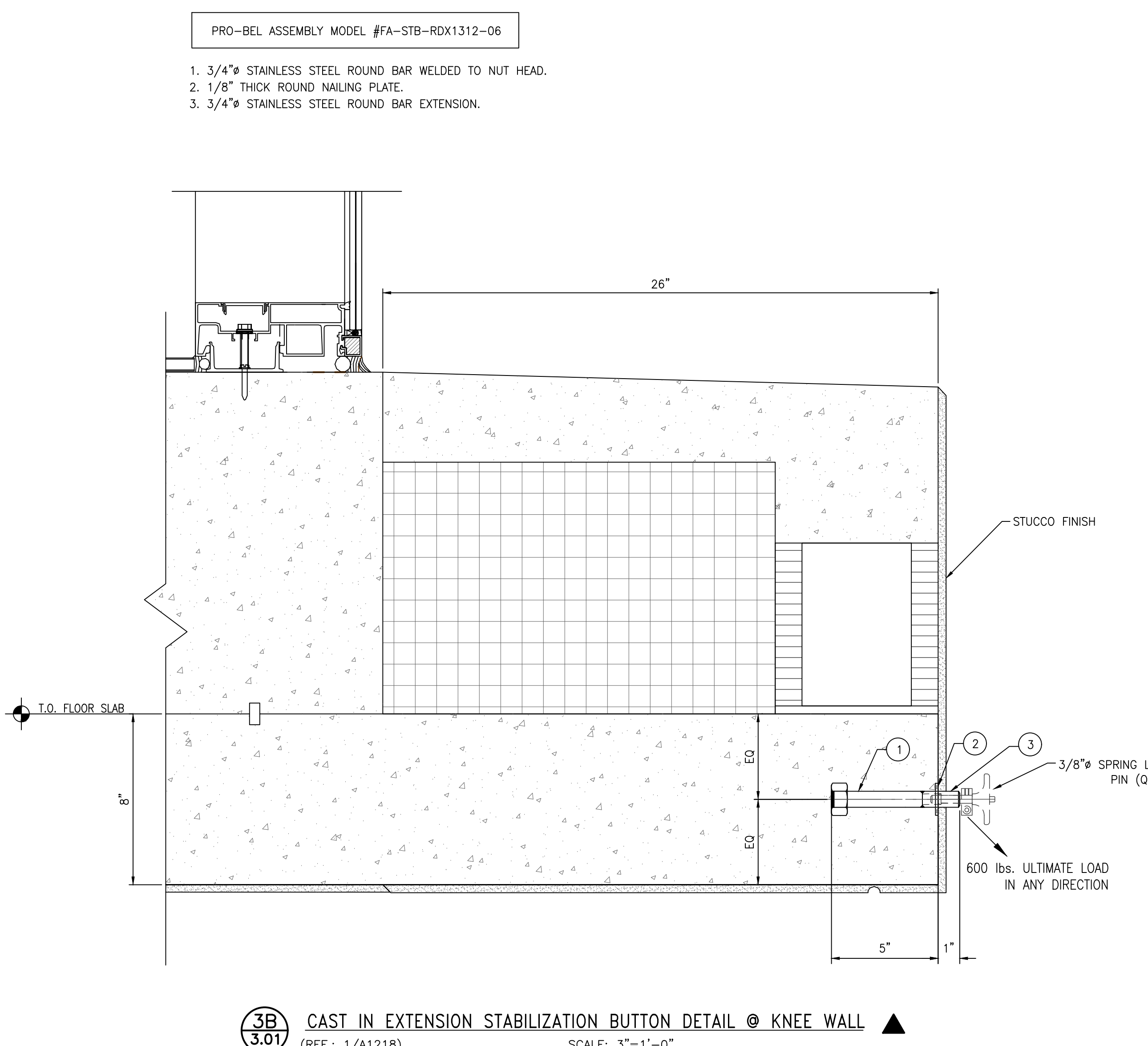
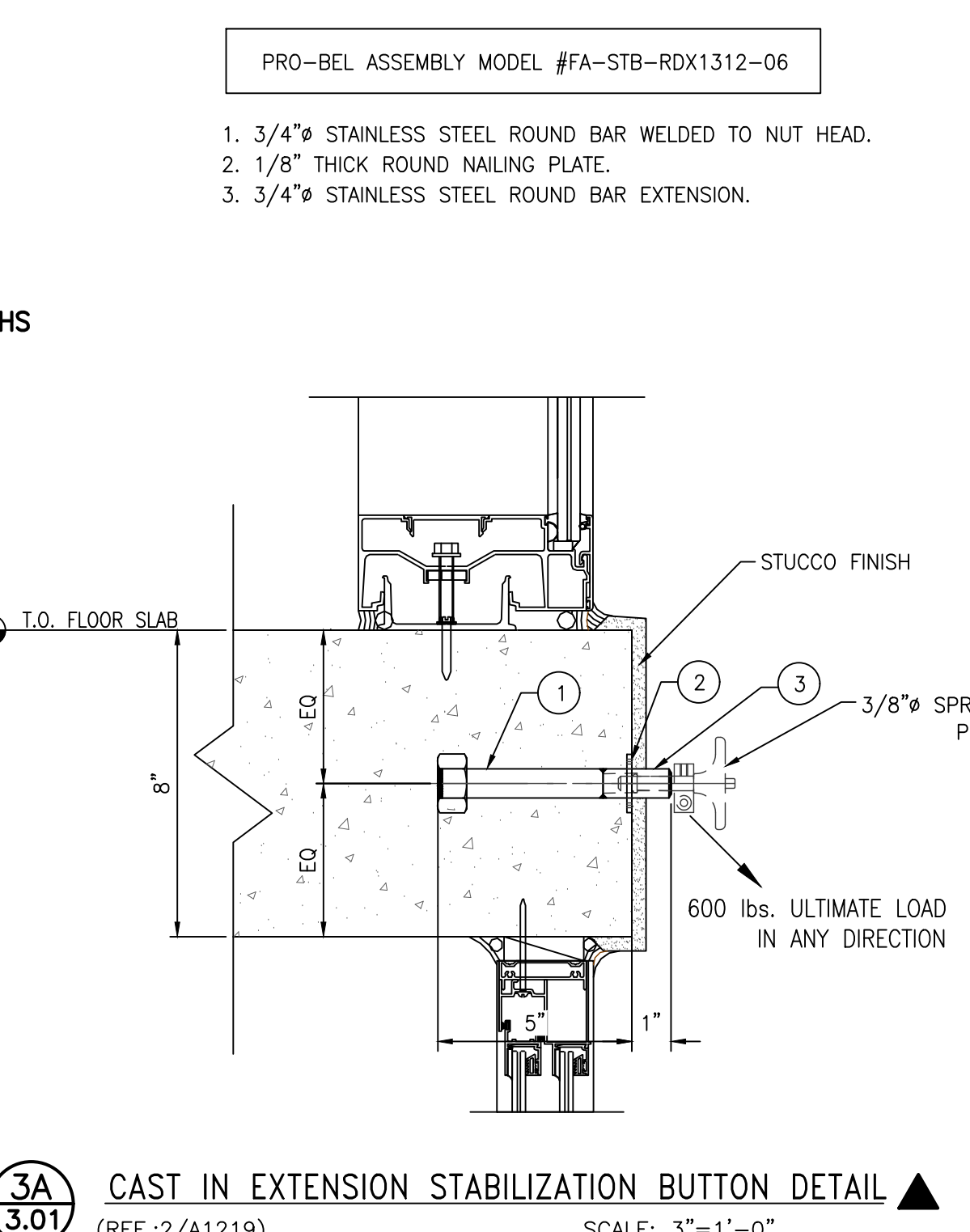
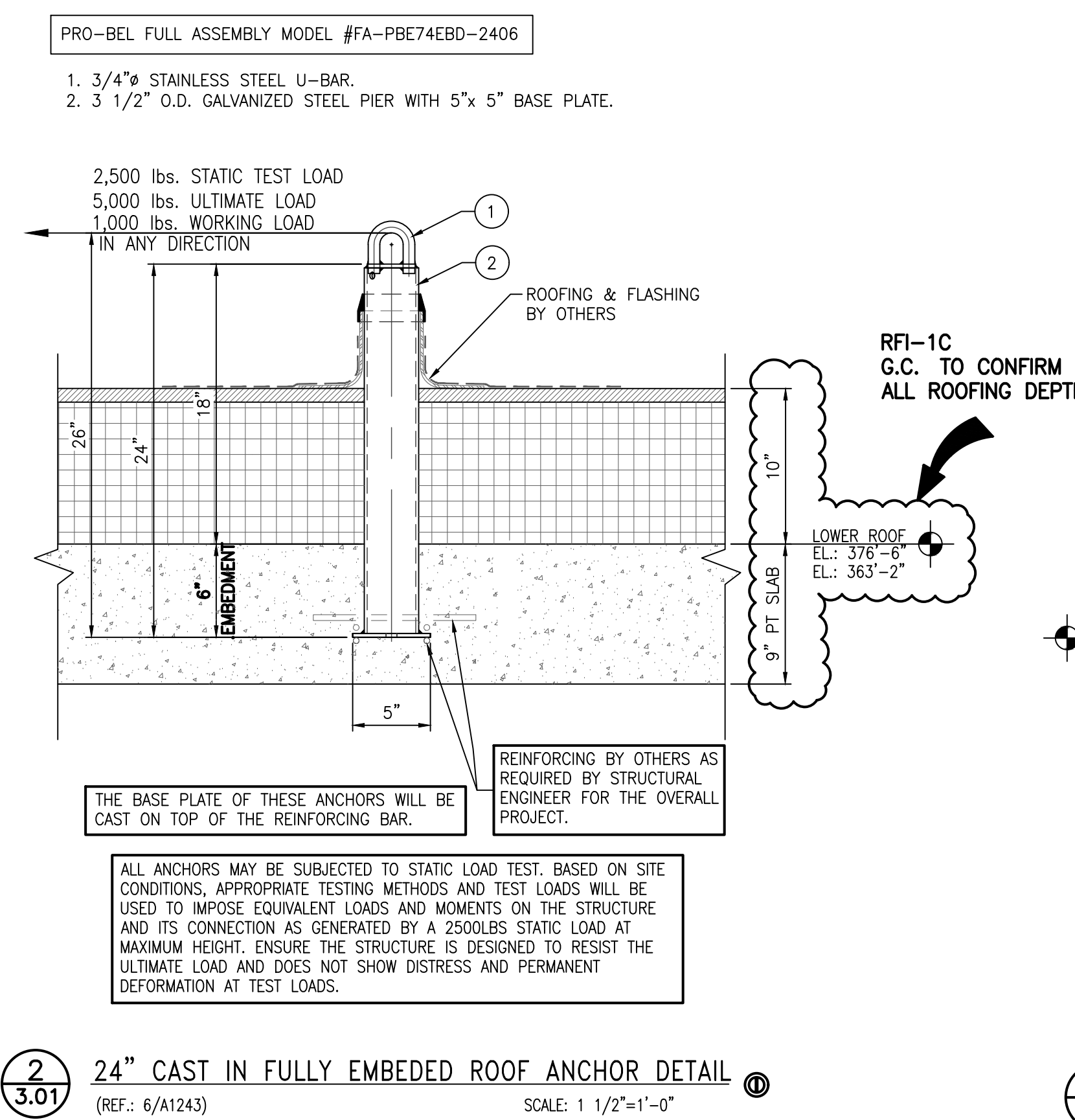
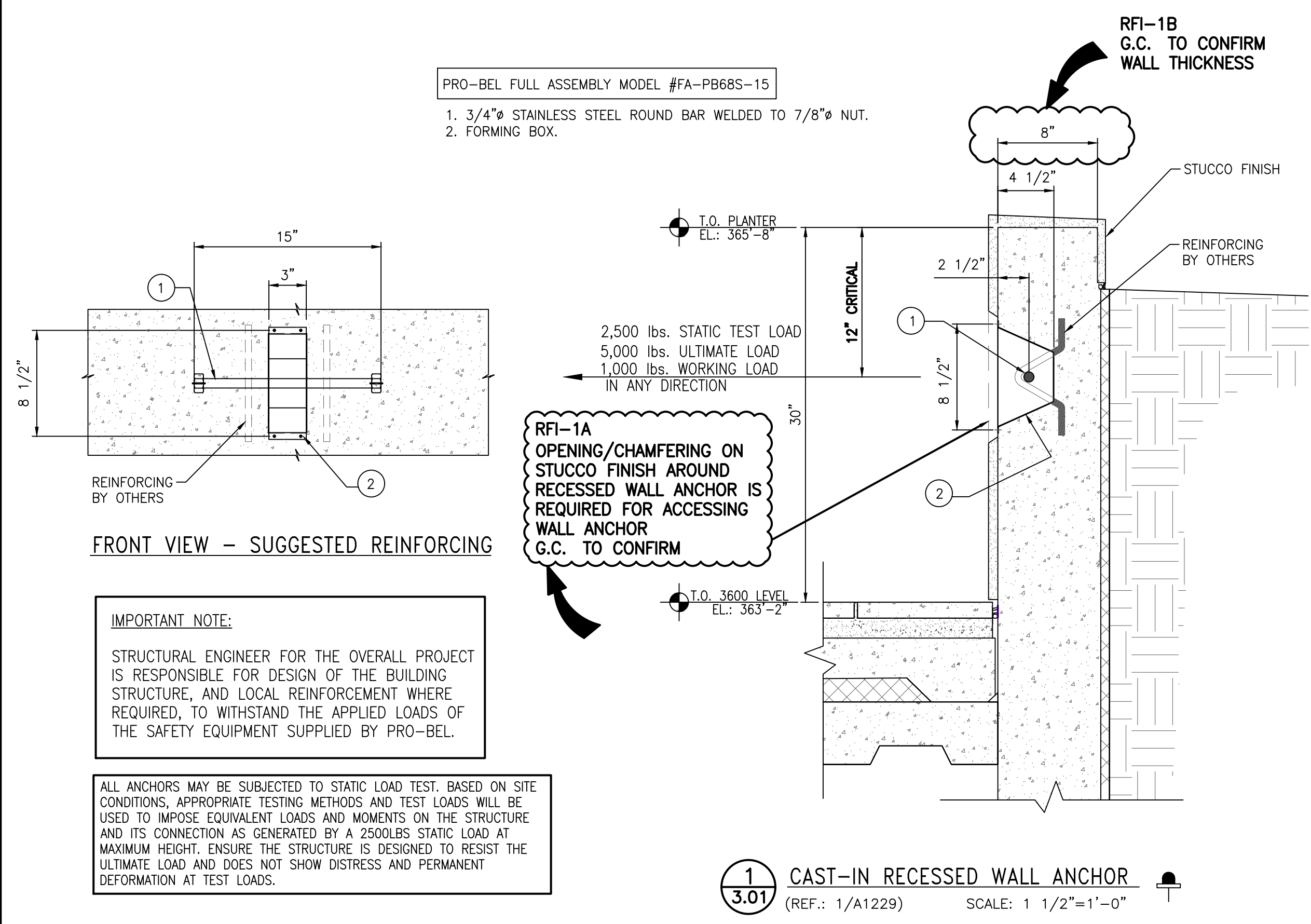
PROJECT:
**MODERA RIVERSIDE
230 SW 3 ST
MIAMI, FL 33034**

PROJECT SCOPE: SUPPLY ONLY w/ SITE LOAD TESTING			
MM/DD/YYYY: 09/13/2022	TECH. REVIEW		
SCALE: AS INDICATED	SALES	PM	ENG/SUP
DRAWN BY: BEN	MG	JT	
TITLE: WINDOW CLEANING SAFETY EQUIPMENT ELEVATIONS			SHEET NO. 2.01
JOB NO. 6N1-2022-39310			REV. NO. 0

IMPORTANT STRUCTURAL NOTE:
ENGINEER OF RECORD FOR THE OVERALL PROJECT IS RESPONSIBLE FOR DESIGN OF THE BUILDING STRUCTURE, AND LOCAL REINFORCEMENT WHERE REQUIRED, TO WITHSTAND THE APPLIED LOADS OF THE SAFETY EQUIPMENT SUPPLIED BY PRO-BEL.

SPECIAL INSPECTION NOTE:
SPECIAL INSPECTION OF ALL CAST IN PLACE AND WELDED CONNECTION ARE RESPONSIBILITY OF OTHERS AND SHOULD BE CONSIDERED. DOCUMENTED EVIDENCE OF SUCH INSPECTION SHALL BE MADE AVAILABLE TO PRO-BEL.

NO.	REVISION	BY	CHKD	MM/DD/YYYY



IMPORTANT STRUCTURAL NOTE:
 ENGINEER OF RECORD FOR THE OVERALL PROJECT IS RESPONSIBLE FOR DESIGN OF THE BUILDING STRUCTURE, AND LOCAL REINFORCEMENT WHERE REQUIRED, TO WITHSTAND THE APPLIED LOADS OF THE SAFETY EQUIPMENT SUPPLIED BY PRO-BEL.

SPECIAL INSPECTION NOTE:
 SPECIAL INSPECTION OF ALL CAST IN PLACE AND WELDED CONNECTION ARE RESPONSIBILITY OF OTHERS AND SHOULD BE CONSIDERED. DOCUMENTED EVIDENCE OF SUCH INSPECTION SHALL BE MADE AVAILABLE TO PRO-BEL.

NO.	REVISION	BY	CHKD	MM/DD/YYYY

GENERAL NOTES - SEE SHEET 1.01

THE ENGINEER'S SEAL INDICATES ONLY THAT THE STRUCTURAL COMPONENTS SUPPLIED BY PRO-BEL.

3) WILL RESIST THE LOADS INDICATED ON THIS DRAWING WHEN ANALYZED BY COMPETENT STRUCTURAL ENGINEER.

4) HAVE BEEN REQUESTED FOR THE LOADS INDICATED.

THIS DRAWING IS ON LOAN ONLY AND THE EQUIPMENT IS CONSIDERED CERTIFIED. PROMISING ANNUAL INSPECTIONS ARE PERFORMED IN ACCORDANCE WITH PRO-BEL LOG BOOK REQUIREMENTS.

THE CONTRACTOR MUST VERIFY ALL DIMENSIONS.

ANY DEVIATION FROM THIS DRAWING MUST BE REPORTED TO PRO-BEL ENTERPRISES LIMITED.

THIS DRAWING MUST NOT BE USED FOR CONSTRUCTION UNTIL IT IS APPROVED.

PRO-BEL USA INC.
 765 WESLEY ROAD SOUTH
 AURORA, ONTARIO, CANADA L1S 6R1
 Tel: (905) 427-9816, Fax: (905) 427-2545
 Toll Free: 1 (800) 461-6575
 Web: www.pro-belgroup.com
 E-Mail: info@pro-bel.ca

CLIENT:
 HILL CREEK RESIDENTIAL TRUST S. FLORIDA CONS., LLC

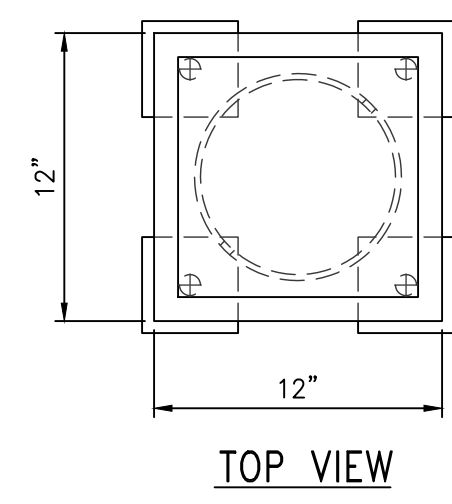
PROJECT:
 MODERA RIVERSIDE
 230 SW 3 ST
 MIAMI, FL 33034

PROJECT SCOPE: SUPPLY ONLY w/ SITE LOAD TESTING

MM/DD/YYYY: 09/13/2022	TECH. REVIEW	
SCALE: AS INDICATED	SALES	PM
DRAWN BY: BEN	MG	JT

TITLE:
 WINDOW CLEANING SAFETY EQUIPMENT DETAILS

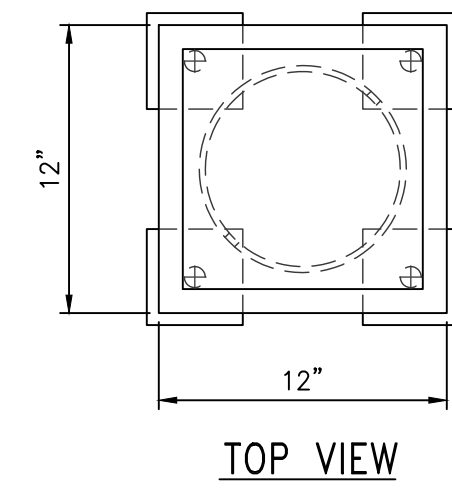
6N1-2022-39310 SHEET NO. 3.01 REV. NO. 0



PRO-BEL FULL ASSEMBLY MODEL #FA-DB6-23208-15

1. 8 5/8" O.D. GALVANIZED STEEL HSS w/ 10" x 10" GALVANIZED STEEL TOP PLATE.
- SUB-ASSEMBLY MODEL #SA-MBD14024-EM638
2. 7/8" GALVANIZED STEEL RODS (4x).
3. 12" x 12" GALVANIZED STEEL PLATE.
4. 4" x 4" STEEL BACK PLATES (4x).

TOP VIEW



PRO-BEL FULL ASSEMBLY MODEL #FA-DB6-23208-15

1. 8 5/8" O.D. GALVANIZED STEEL HSS w/ 10" x 10" GALVANIZED STEEL TOP PLATE.
- SUB-ASSEMBLY MODEL #SA-MBD14024-EM638
2. 7/8" GALVANIZED STEEL RODS (4x).
3. 12" x 12" GALVANIZED STEEL PLATE.
4. 4" x 4" STEEL BACK PLATES (4x).

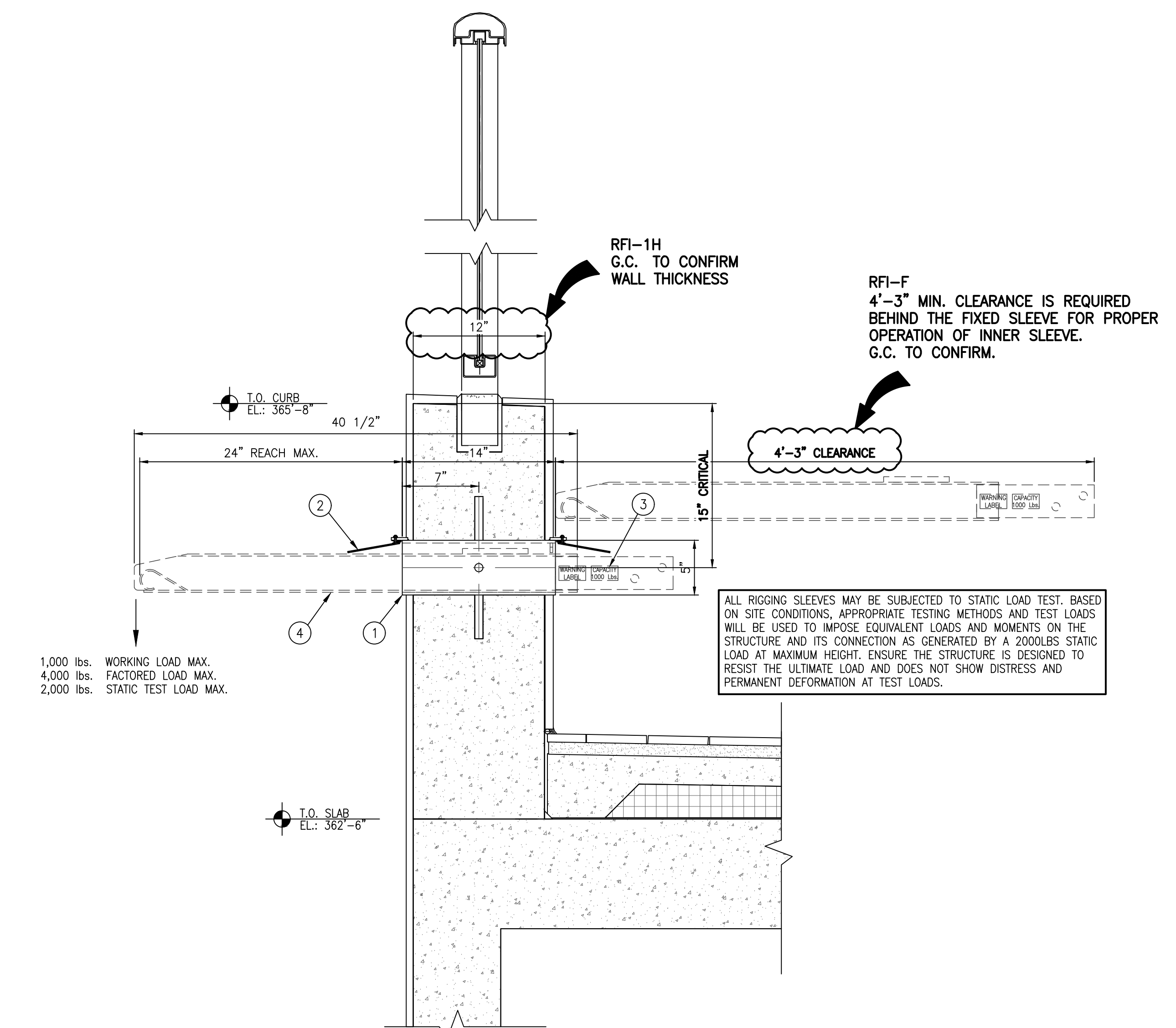
TOP VIEW

FIXED SLEEVE FULL ASSEMBLY MODEL #CUSTOM-1

1. 5" x 5" HSS FIXED SLEEVE w/ 4 - CASTING LUGS.
2. HINGED GAP (x2).

INNER SLEEVE FULL ASSEMBLY MODEL #FA-RSH3.554-0405

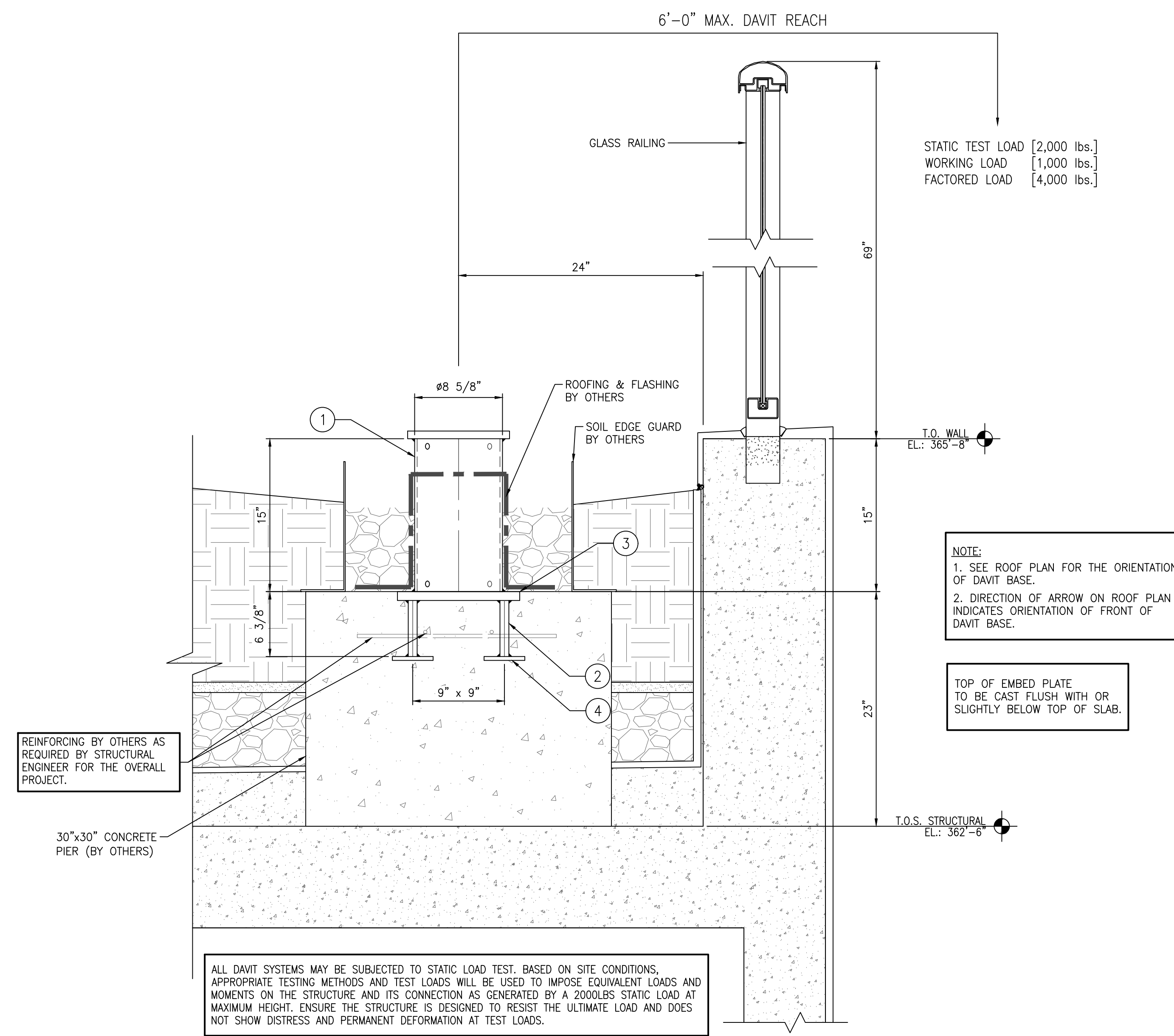
3. RIGGING SLEEVE HEAD w/ 2- 3/4" STAINLESS STEEL ROUND BARS.
4. 3 1/2" x 3 1/2" HSS RIGGING SLEEVE INSERT



14" CAST IN WALL HORIZONTAL RIGGING SLEEVE DETAIL

3.02 (REF: 1/A1216)

SCALE: 1 1/2"=1'-0"

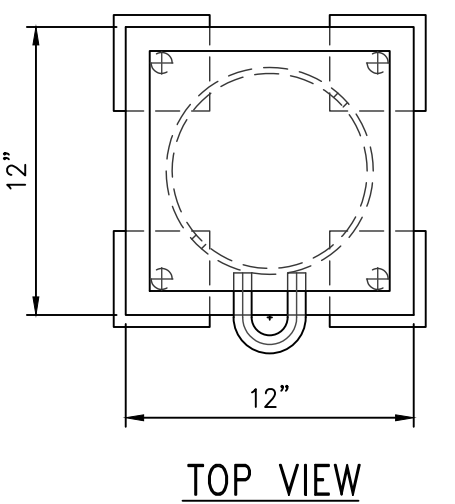


15" CAST-IN EMBED DAVIT BASE DETAIL

3.02 (REF: 4/A1217)

SCALE: 1 1/2"=1'-0"

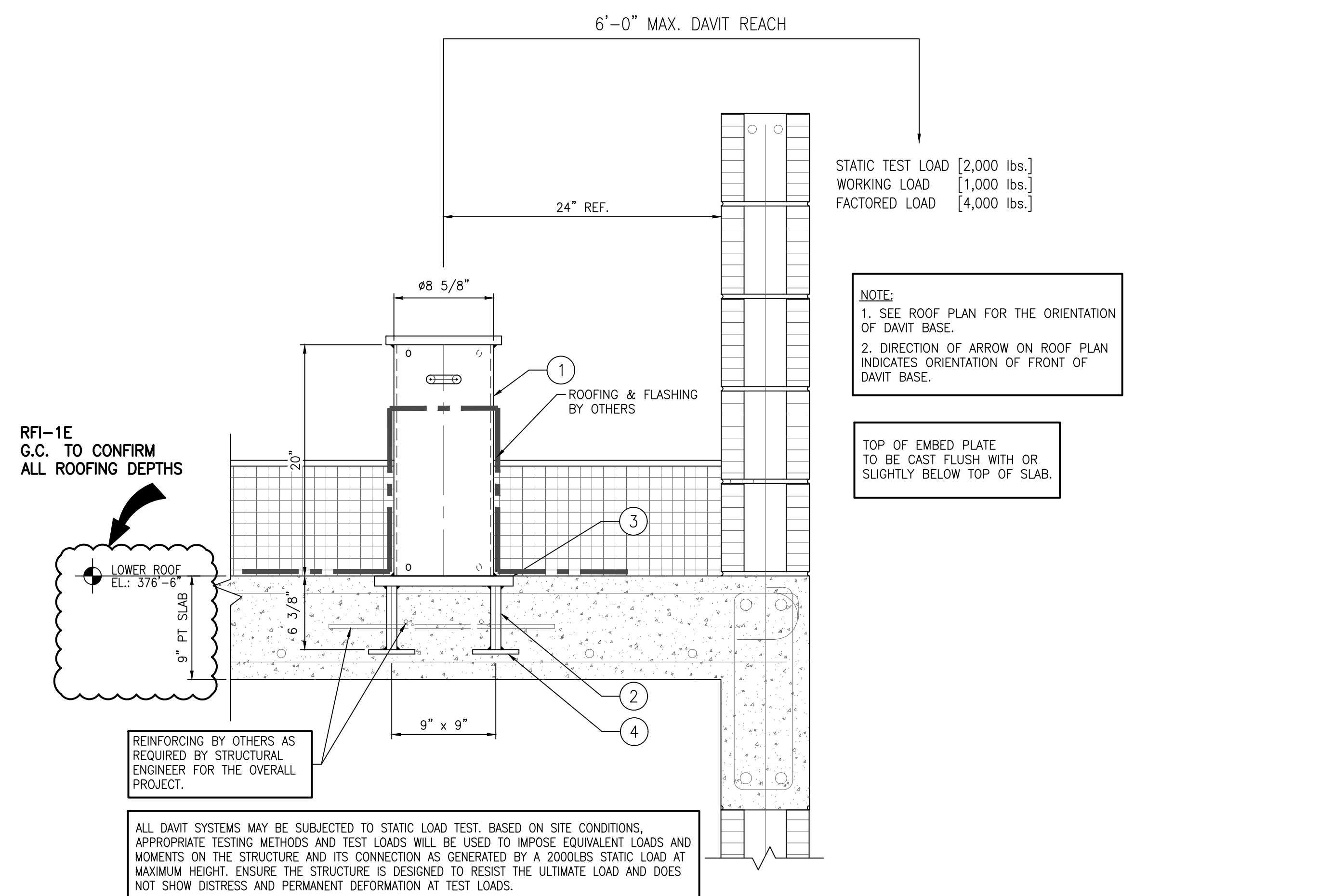
DETAIL FOR DAVIT BASE #DB8~#DB12 ONLY



PRO-BEL FULL ASSEMBLY MODEL #FA-DB6-23218-20

1. 8 5/8" O.D. GALVANIZED STEEL HSS w/ U-BAR, WELDED TO 10" x 10" GALVANIZED STEEL TOP PLATE.
- SUB-ASSEMBLY MODEL #SA-MBD14024-EM638
2. 7/8" GALVANIZED STEEL RODS (4x).
3. 12" x 12" GALVANIZED STEEL PLATE.
4. 4" x 4" GALVANIZED STEEL BACK PLATES (4x).

TOP VIEW

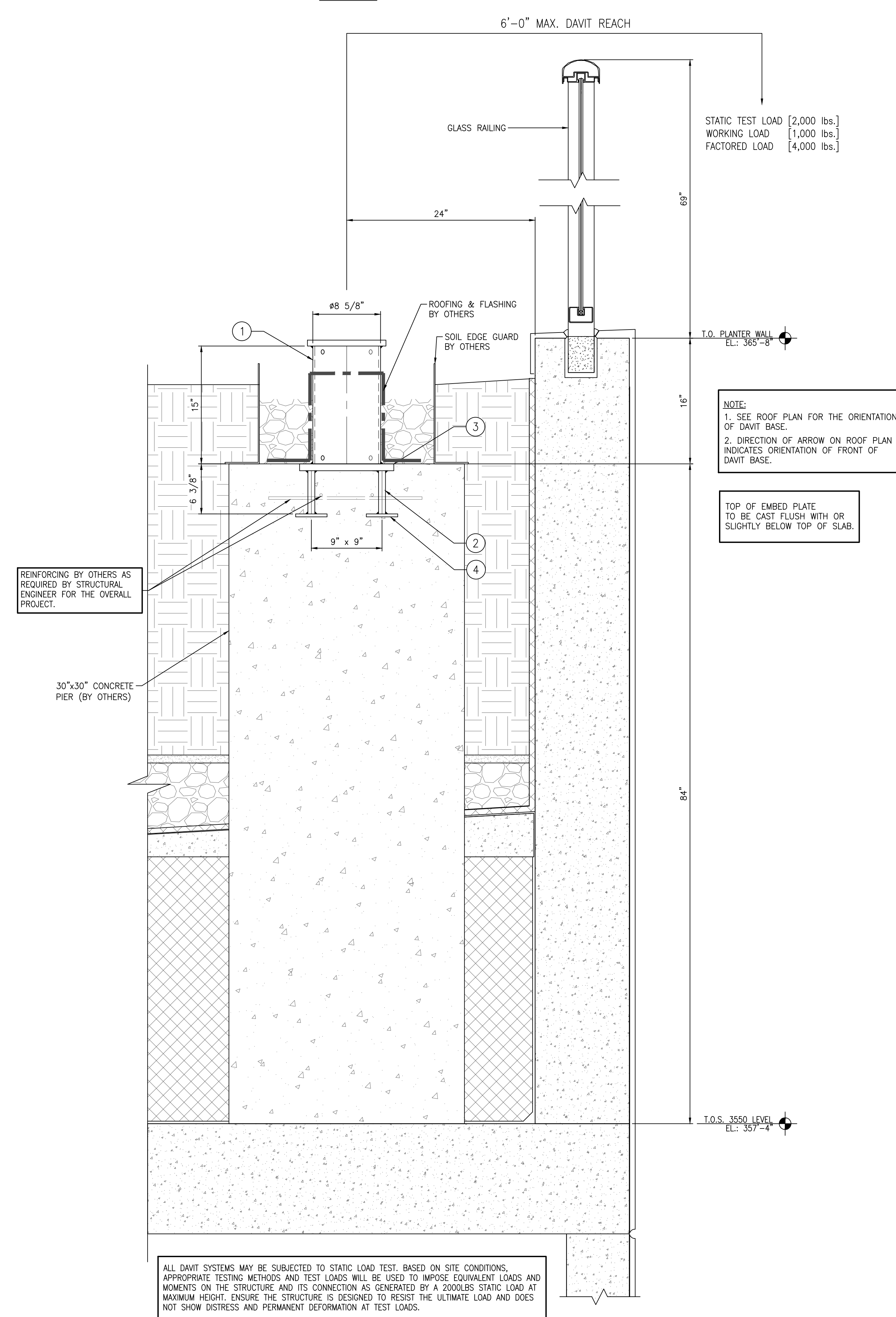


20" CAST-IN EMBED DAVIT BASE W/ U-BAR DETAIL

3.02 (REF: 16/5511)

SCALE: 1 1/2"=1'-0"

DETAIL FOR DAVIT BASE #DB1~#DB3 ONLY



15" CAST-IN EMBED DAVIT BASE DETAIL

3.02 (REF: 3/A1216)

SCALE: 1 1/2"=1'-0"

DETAIL FOR DAVIT BASE #DB4~#DB7 ONLY

IMPORTANT STRUCTURAL NOTE:
 ENGINEER OF RECORD FOR THE OVERALL PROJECT IS RESPONSIBLE FOR DESIGN OF THE BUILDING STRUCTURE, AND LOCAL REINFORCEMENT WHERE REQUIRED, TO WITHSTAND THE APPLIED LOADS OF THE SAFETY EQUIPMENT SUPPLIED BY PRO-BEL.

SPECIAL INSPECTION NOTE:
 SPECIAL INSPECTION OF ALL CAST IN PLACE AND WELDED CONNECTION ARE RESPONSIBILITY OF OTHERS AND SHOULD BE CONSIDERED. DOCUMENTED EVIDENCE OF SUCH INSPECTION SHALL BE MADE AVAILABLE TO PRO-BEL.

GENERAL NOTES - SEE SHEET 1.01

THE ENGINEER'S SEAL INDICATES ONLY THAT THE STRUCTURAL COMPONENTS SUPPLIED BY PRO-BEL:

- 1) WILL RESIST THE LOADS INDICATED ON THIS DRAWING WHEN ANALYZED BY CONVENTIONAL STRUCTURAL METHODS; OR
- 2) HAVE BEEN ANALYZED FOR THE LOADS INDICATED.

THIS DRAWING IS ON LOAN ONLY AND THE EQUIPMENT IS CONSIDERED CERTIFIED PROVIDED ANNUAL INSPECTIONS ARE PERFORMED IN ACCORDANCE WITH PRO-BEL LOG BOOK REQUIREMENTS.

THE CONTRACTOR MUST VERIFY ALL DIMENSIONS.

ANY DEVIATION FROM THIS DRAWING MUST BE REPORTED TO PRO-BEL ENTERPRISES LIMITED.

THIS DRAWING MUST NOT BE USED FOR CONSTRUCTION UNTIL IT IS APPROVED.

PRO-BEL USA INC.
 765 WESNEY ROAD SOUTH
 AURORA, ONTARIO, CANADA L1S 6R1
 Tel: (905) 427-0816, Fax: (905) 427-2545
 Toll Free: 1 (800) 461-6575
 Web: www.pro-belgroup.com
 E-Mail: info@pro-bel.ca

CLIENT:
 WILL CREEK RESIDENTIAL TRUST S. FLORIDA CONS., LLC

PROJECT:
 MODERA RIVERSIDE
 230 SW 3 ST
 MIAMI, FL 33034

PROJECT SCOPE: SUPPLY ONLY w/ SITE LOAD TESTING

MM/DD/YYYY: 09/13/2022	TECH. REVIEW	
SCALE: AS INDICATED	SALES	PM
DRAWN BY: BEN	MG	JT

TITLE:
 WINDOW CLEANING SAFETY EQUIPMENT DETAILS

PROJ. NO.
 6N1-2022-39310

SHEET NO.
 3.01

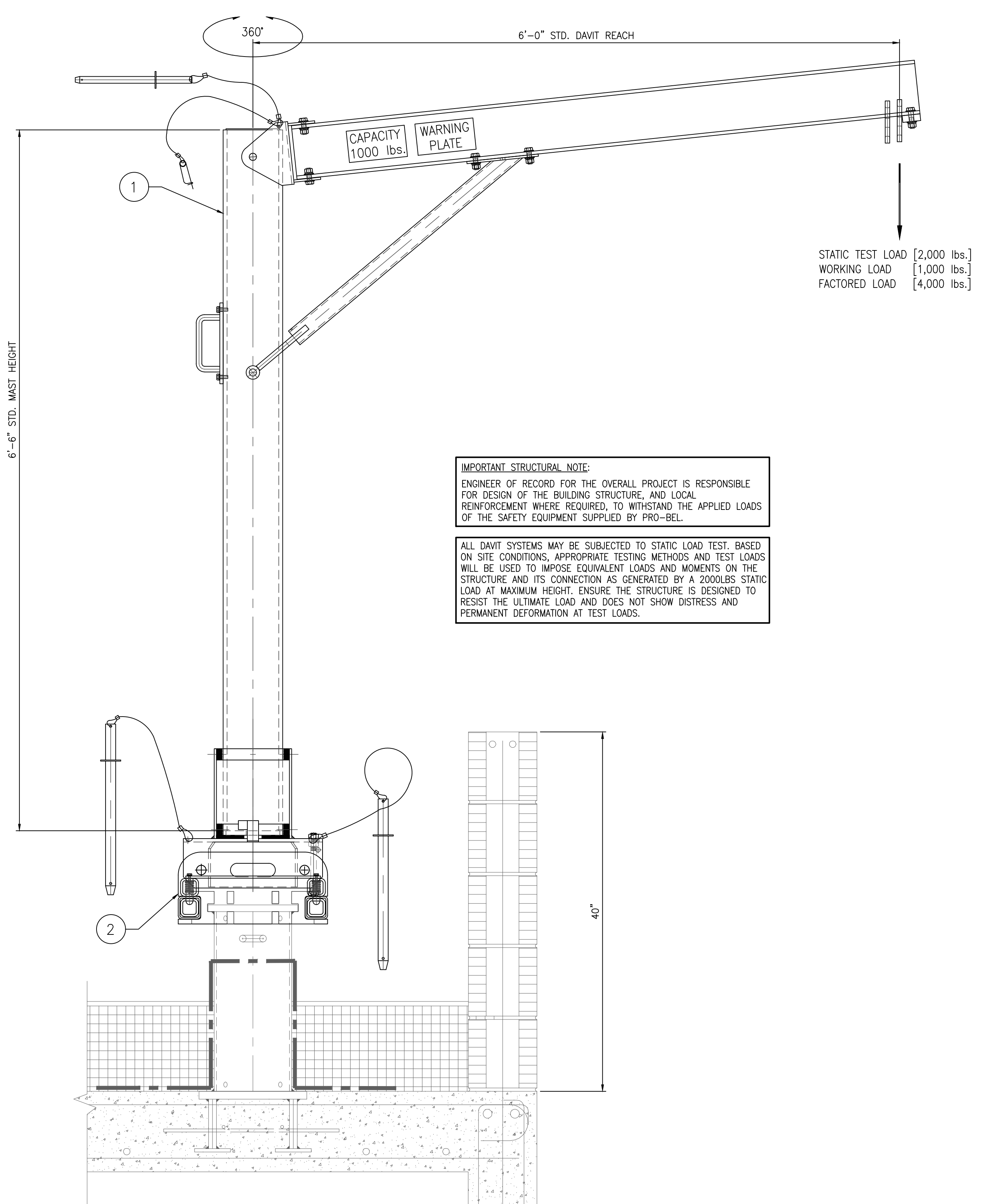
REV. NO.
 0

PRO-BEL DAVIT ARM FULL ASSEMBLY MODEL #CUSTOM-2

- A100 - BOTTOM ROTATING ALUMINUM DAVIT ARM [6'-6" TALL (6 5/8" OD MAST), 6'-0" REACH (1 6X4 BOOM)] c/w SOCKET & DOUBLE FRICTION TROLLEYS.

PRO-BEL SUB ASSEMBLY MODEL #FA-AD622-08

- ADAPTOR FULL ASSEMBLY: 200 SERIES DAVIT ADAPTOR FOR 600 SERIES FLAT DAVIT BASE (8'-6" MAX. REACH)



IMPORTANT STRUCTURAL NOTE:
ENGINEER OF RECORD FOR THE OVERALL PROJECT IS RESPONSIBLE FOR DESIGN OF THE BUILDING STRUCTURE, AND LOCAL REINFORCEMENT WHERE REQUIRED, TO WITHSTAND THE APPLIED LOADS OF THE SAFETY EQUIPMENT SUPPLIED BY PRO-BEL.

ALL DAVIT SYSTEMS MAY BE SUBJECTED TO STATIC LOAD TEST, BASED ON SITE CONDITIONS, APPROPRIATE TESTING METHODS AND TEST LOADS WILL BE USED TO IMPOSE EQUIVALENT LOADS AND MOMENTS ON THE STRUCTURE AND ITS CONNECTION AS GENERATED BY A 2000LBS STATIC LOAD AT MAXIMUM HEIGHT. ENSURE THE STRUCTURE IS DESIGNED TO RESIST THE ULTIMATE LOAD AND DOES NOT SHOW DISTRESS AND PERMANENT DEFORMATION AT TEST LOADS.

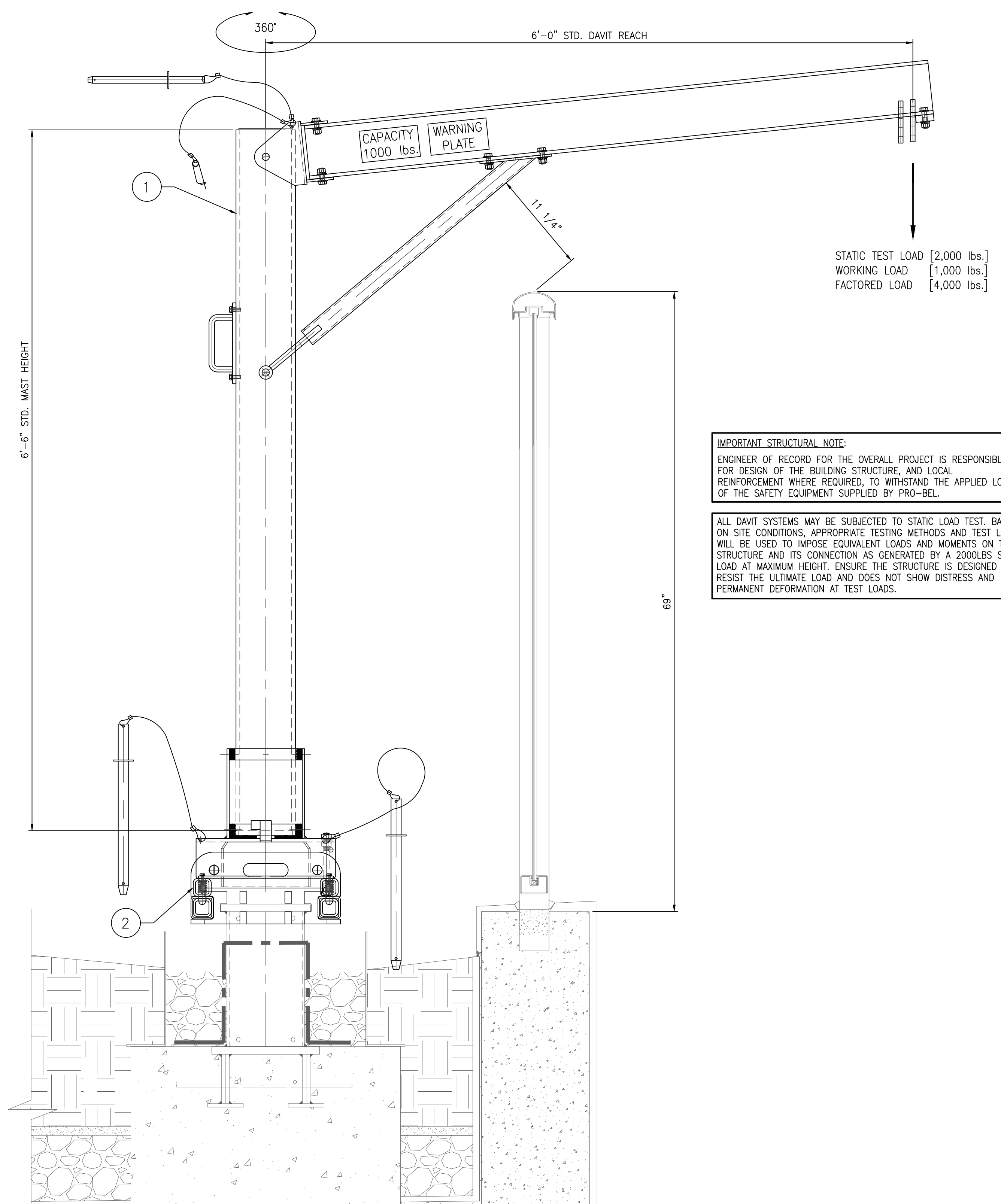
10A
3.03 A100 FRONT LOAD DAVIT ARM DETAIL (REF.) SCALE: 1 1/2" = 1'-0" 6'-6" TALL MAST & 6'-0" REACH

PRO-BEL DAVIT ARM FULL ASSEMBLY MODEL #CUSTOM-2

- A100 - BOTTOM ROTATING ALUMINUM DAVIT ARM [6'-6" TALL (6 5/8" OD MAST), 6'-0" REACH (1 6X4 BOOM)] c/w SOCKET & DOUBLE FRICTION TROLLEYS.

PRO-BEL SUB ASSEMBLY MODEL #FA-AD622-08

- ADAPTOR FULL ASSEMBLY: 200 SERIES DAVIT ADAPTOR FOR 600 SERIES FLAT DAVIT BASE (8'-6" MAX. REACH)



IMPORTANT STRUCTURAL NOTE:
ENGINEER OF RECORD FOR THE OVERALL PROJECT IS RESPONSIBLE FOR DESIGN OF THE BUILDING STRUCTURE, AND LOCAL REINFORCEMENT WHERE REQUIRED, TO WITHSTAND THE APPLIED LOADS OF THE SAFETY EQUIPMENT SUPPLIED BY PRO-BEL.

ALL DAVIT SYSTEMS MAY BE SUBJECTED TO STATIC LOAD TEST, BASED ON SITE CONDITIONS, APPROPRIATE TESTING METHODS AND TEST LOADS WILL BE USED TO IMPOSE EQUIVALENT LOADS AND MOMENTS ON THE STRUCTURE AND ITS CONNECTION AS GENERATED BY A 2000LBS STATIC LOAD AT MAXIMUM HEIGHT. ENSURE THE STRUCTURE IS DESIGNED TO RESIST THE ULTIMATE LOAD AND DOES NOT SHOW DISTRESS AND PERMANENT DEFORMATION AT TEST LOADS.

10B
3.03 A100 FRONT LOAD DAVIT ARM DETAIL (REF.) SCALE: 1 1/2" = 1'-0" 6'-6" TALL MAST & 6'-0" REACH

IMPORTANT STRUCTURAL NOTE:
ENGINEER OF RECORD FOR THE OVERALL PROJECT IS RESPONSIBLE FOR DESIGN OF THE BUILDING STRUCTURE, AND LOCAL REINFORCEMENT WHERE REQUIRED, TO WITHSTAND THE APPLIED LOADS OF THE SAFETY EQUIPMENT SUPPLIED BY PRO-BEL.

SPECIAL INSPECTION NOTE:
SPECIAL INSPECTION OF ALL CAST IN PLACE AND WELDED CONNECTION ARE RESPONSIBILITY OF OTHERS AND SHOULD BE CONSIDERED. DOCUMENTED EVIDENCE OF SUCH INSPECTION SHALL BE MADE AVAILABLE TO PRO-BEL.

GENERAL NOTES - SEE SHEET 1.01

THE ENGINEER'S SEAL INDICATES ONLY THAT THE STRUCTURAL COMPONENTS SUPPLIED BY PRO-BEL:

3) WILL RESIST THE LOADS INDICATED IN THIS DRAWING WHEN ANALYZED BY CONVENTIONAL STRUCTURAL METHODS OR

3) HAVE BEEN ANALYZED FOR THE LOADS INDICATED.

THIS DRAWING IS ON LOAN ONLY AND THE EQUIPMENT IS CONSIDERED CERTIFIED PROVIDED ANNUAL INSPECTIONS ARE PERFORMED IN ACCORDANCE WITH PRO-BEL LOG BOOK REQUIREMENTS.

THE CONTRACTOR MUST VERIFY ALL DIMENSIONS. ANY DEVIATION FROM THIS DRAWING MUST BE REPORTED TO PRO-BEL ENTERPRISES LIMITED.

THIS DRAWING MUST NOT BE USED FOR CONSTRUCTION UNLESS IT IS APPROVED.

PRO-BEL USA INC.
765 WESNEY ROAD SOUTH
AUXA, ONTARIO, CANADA L1S 6R1
Tel: (905) 427-0816, Fax: (905) 427-2545
Tel. Free: 1 (800) 461-6575
Web: www.pro-belgroup.com
E-Mail: info@pro-bel.co

CLIENT:
MILL CREEK RESIDENTIAL TRUST S. FLORIDA CONS., LLC

PROJECT:
MODERA RIVERSIDE
230 SW 3 ST
MIAMI, FL 33034

PROJECT SCOPE: SUPPLY ONLY w/ SITE LOAD TESTING

MM/DD/YYYY: 09/13/2022

TECH. REVIEW	
SALES	PM
MG	JT

TITLE:
WINDOW CLEANING SAFETY EQUIPMENT DETAILS

PROJ. NO. 6N1-2022-39310

SHEET NO. 3.01

REV. NO. 0

NO.	REVISION	BY	CHKD	MM/DD/YYYY