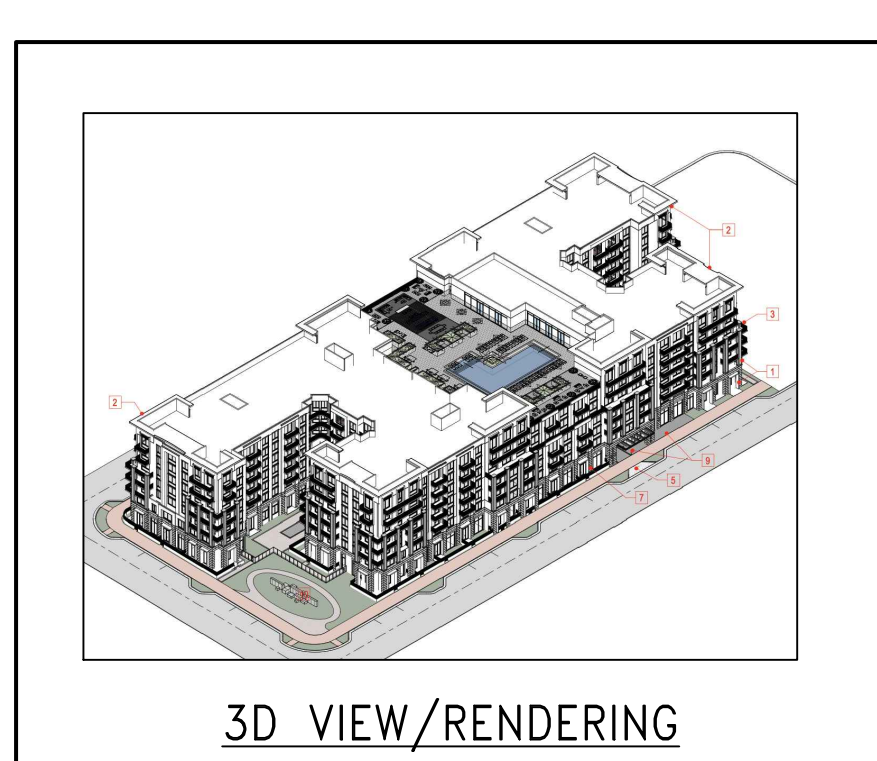
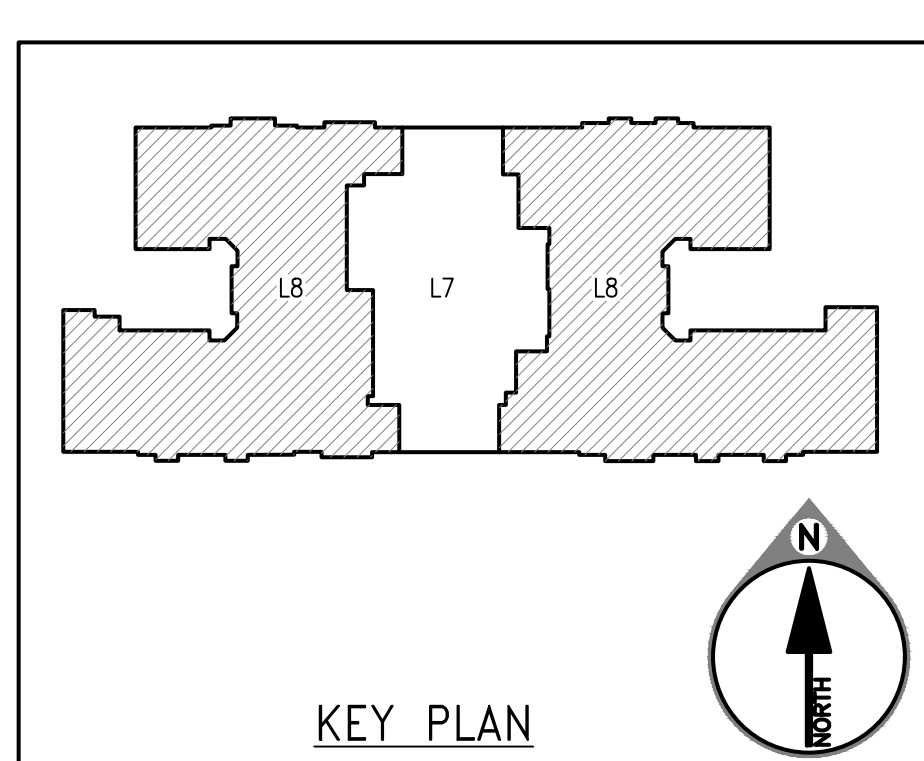


A 1.01 COMPOSITE ROOF PLAN/SAFETY EQUIPMENT LAYOUT
 (REF: A-2.09) SCALE: 3/32" = 1'-0"



LIST OF DRAWING SHEETS	
SHEET NO.	DRAWING SHEET TITLE
1.01	WINDOW CLEANING SAFETY EQUIPMENT LAYOUT & GENERAL NOTES
2.01	WINDOW CLEANING SAFETY EQUIPMENT DETAILS
3.02	WINDOW CLEANING SAFETY EQUIPMENT DETAILS

THESE DRAWINGS HAVE BEEN PREPARED BASED ON INFORMATION FOUND IN THE FOLLOWING:

ARCHITECTURAL	STRUCTURAL
CORNBLAND ARCHITECTS 07/23/21 A-2.09	BLISS & WHITNEY, INC. 05/07/21 S-7.01

FOR REVIEW

THE ENGINEER'S SEAL INDICATES ONLY THAT THE STRUCTURAL COMPONENTS SUPPLIED BY PRO-BEL WILL BESS THE LOADS INDICATED ON THIS DRAWING WHEN ANALYZED BY CONVENTIONAL STRUCTURAL TECHNIQUES, OR HAS BEEN LAB TESTED FOR THE LOADS INDICATED.

THE CONTRACTOR MUST VERIFY ALL DIMENSIONS. ANY DEVIATION FROM THIS DRAWING MUST BE REPORTED TO PRO-BEL ENTERPRISES LIMITED. THIS DRAWING MUST NOT BE USED FOR CONSTRUCTION UNTIL IT IS APPROVED.

PRO-BEL USA INC.
 705 WISNER ROAD SOUTH
 AUK CREEK, CANON, FL 32909
 Tel: (904) 427-0616, Fax: (904) 427-2545
 Toll Free: 1 (800) 461-0575
 Web: www.pro-bel.com
 E-Mail: info@pro-bel.com

CLIENT:
TRAMMEL CROW RESIDENTIAL
 PROJECT:
**ALEXAN CRAFTS
 330 CATALONIA AVENUE
 CORAL GABLES, FL 33146**

PROJECT SCOPE: SUPPLY & INSTALL (SLEEVES ONLY) w/ SITE LOAD TESTING	DATE: MM/DD/YYYY: 01/29/2023	TECH. REVIEW
SCALE: AS INDICATED	SALES	PM
DRAWN BY: HSN	MC	ENG/SIP
TITLE: WINDOW CLEANING SAFETY EQUIPMENT LAYOUT & GENERAL NOTES	JOB NO. 6N1-2022-40151	SHEET NO. 1.01
REVISION	BY: CHKD	MM/DD/YYYY

GENERAL NOTES:

- PRO-BEL EQUIPMENT IS DESIGNED TO FEDERAL OSHA - GENERAL INDUSTRY - REGULATION (STANDARDS-29 CFR) UNDER PART 1910; OCCUPATIONAL SAFETY AND HEALTH STANDARDS - 1910.28 - QUALITY TO HAVE FALL PROTECTION AND FALLING OBJECT PROTECTION. CONSULT/REVIEW WITH ARCHITECT AND CODE CONSULTANT.
- PARAPET WALLS AND ROOF EDGES THAT SUPPORT SAFETY LINES AND/OR DIRECT RIGGING LINES SHALL BE DESIGNED BY THE PROJECT STRUCTURAL ENGINEER/ARCHITECT FOR THE PORTIONS OF BUILDING STRUCTURE THAT SUPPORT PRO-BEL EQUIPMENT SHALL BE VERIFIED BY THE PROJECT STRUCTURAL ENGINEER/ARCHITECT FOR THE RESULTING FORCES AND MOMENTS DUE TO THE LOADS SHOWN ON PRO-BEL SHOP DRAWINGS.
- REINFORCING OF BUILDING STRUCTURE BY OTHERS AS REQUIRED BY THE PROJECT STRUCTURAL ENGINEER TO RESIST THE LOADS IMPOSED BY PRO-BEL EQUIPMENT.
- THE SAFETY ANCHOR HAS BEEN TESTED TO ENSURE THAT DETACHMENT DOES NOT OCCUR WITH A 22.5 KN (5,000 LB) LOAD.
- INSTALLATION OF HORIZONTAL LIFELINES, STATIC LINES AND/OR ROG LINES BETWEEN ANCHORS/DOWTS WITHOUT PRIOR WRITTEN APPROVAL FROM PRO-BEL IS STRICTLY PROHIBITED, AND WILL RESULT IN THE MANUFACTURER'S WARRANTY BECOMING VOID AND THE RELEVANT PRODUCT LIABILITY INSURANCE BEING CANCELLED.
- EVERY MAN OR WORKING ROOF LEVEL MUST HAVE DIRECT ACCESS TO THE INTERIOR OF THE BUILDING.

MATERIAL:

- ALL STRUCTURAL STEEL IS DESIGNED AS PER AISC SPECIFICATIONS.
- ALL HOLLOW STRUCTURAL SECTIONS CONFORM TO ASTM A500 OR EQUIVALENT CAN/CSA-C44.20/C44.21.
- ALL STEEL PLATE AND OTHER SECTIONS CONFORM TO ASTM A36 OR EQUIVALENT CAN/CSA-C40.20/C40.21.
- STAINLESS STEEL - TYPE 304/316.
- ALL BOLTS - TYPE 304 STAINLESS OR GALVANIZED STEEL WITH COMPATIBLE NUTS AND WASHERS.

INSTALLATION:

- EQUIPMENT IS TO BE SUPPLIED BY PRO-BEL AND INSTALLED BY OTHERS.
- CAST-IN BOLTS, CAGES, AND FULLY EMBEDDED EQUIPMENT ARE TO BE SUPPLIED BY PRO-BEL AND INSTALLED BY OTHERS. PRO-BEL IS TO BE NOTIFIED IF THE POSITION OR DETAILS OF THE CAST-IN ITEMS DEVIATE FROM THIS DRAWING.
- ALL PRO-BEL EQUIPMENT SHOULD BE VISUALLY INSPECTED BEFORE EACH SCHEDULED SERVICE CYCLE AND NOT LESS THAN ONCE A YEAR FOR ANY DAMAGE, DETRIORATION, WEAR, CORROSION OR ANY OTHER VISUAL DEFECT WHICH WOULD COMPROMISE THE INTEGRITY OF THE EQUIPMENT.
- ANY FALL ARREST INCIDENT OR INCIDENT (FIRE, LIGHTNING ETC) INVOLVING USE OF PRO-BEL EQUIPMENT OR IN THE NEAR VICINITY OF PRO-BEL EQUIPMENT, SHOULD BE REPORTED TO PRO-BEL'S PROFESSIONAL ENGINEER.
- ANY SUSPECTED DAMAGE OR COMPROMISED EQUIPMENT UNDER REPAIR CORRECTIVE ACTION THAT NEEDS TO BE TAKEN UNDER THE DIRECTION OF PRO-BEL'S PROFESSIONAL ENGINEER OF RECORD.
- NO ALTERATION OR MODIFICATION OF ANY PRO-BEL EQUIPMENT, CONNECTION OR THE SUPPORTING STRUCTURE IS PERMITTED AS THIS WILL AFFECT THE INTEGRITY / ABILITY OF THE EQUIPMENT. ANY ALTERATION / MODIFICATION WILL RESULT IN MANUFACTURER'S WARRANTY BECOMING NULL AND VOID AND THE PRODUCT LIABILITY INSURANCE BEING CANCELLED.
- ANY ALTERATION / MODIFICATION OF PRO-BEL'S EQUIPMENT, ITS CONNECTION OR SUPPORTING STRUCTURE SHOULD ONLY BE UNDERTAKEN WITH THE WRITTEN AUTHORIZATION OF PRO-BEL'S PROFESSIONAL ENGINEER OF RECORD.

TESTING:

- IT IS RECOMMENDED ALL INITIAL TESTING, AND SUBSEQUENT TESTING FOR RECERTIFICATION, BASED ON FREQUENCY RECOMMENDED BY PRO-BEL, TO VERIFY THE INTEGRITY OF ALL EQUIPMENT, ITS CONNECTION AND THE SUPPORTING STRUCTURE BE PERFORMED BY PRO-BEL OR ITS AUTHORIZED REPRESENTATIVE. PRO-BEL WILL PROVIDE STAMPED DRAWINGS, TEST REPORTS AND OTHER CERTIFICATIONS BASED ON THESE TESTS AS APPLICABLE.
- YIELDING OF EQUIPMENT AND / OR SUPPORTING STRUCTURE MAY OCCUR AS A RESULT OF LOAD TESTING. WHEN THIS OCCURS, CORRECTIVE ACTION NEEDS TO BE TAKEN BY PRO-BEL FOR ITS EQUIPMENT OR THE BUILDING STRUCTURAL ENGINEER OF RECORD FOR THE SUPPORTING STRUCTURE.

USE:

- EQUIPMENT SHOULD NOT BE USED WHEN WIND VELOCITY IS ABOVE 23MPH (40 KM/H) AT GROUND LEVEL.
- EQUIPMENT SHOULD NOT BE USED DURING ADVERSE WEATHER CONDITIONS THAT WOULD EXPOSE THE OPERATOR OR THE PUBLIC TO ANY INCREASED SAFETY HAZARDS.
- EQUIPMENT SHOULD BE AT LEAST 10 FT. AWAY FROM HIGH VOLTAGE ELECTRICAL LINES.
- ALL USERS OF PRO-BEL EQUIPMENT MUST BE PROPERLY TRAINED IN ORDER TO USE THE EQUIPMENT SAFELY. USERS MUST COMPLY WITH ALL APPLICABLE SAFETY CODES AND REGULATIONS WHEN USING THIS SYSTEM.
- THIS DRAWING MUST BE READ AND USED IN CONJUNCTION WITH THE OPERATING INSTRUCTIONS DESCRIBED IN THE LOG BOOK SUPPLIED BY PRO-BEL.
- WORKERS MUST HAVE A WORK PLAN PRIOR TO START OF WORK ON THE TOP ROOF AREA AND OTHER AREAS WHERE WINDOW WASHING EQUIPMENT IS TO BE USED AND ALSO DEMONSTRATE HOW TO RIG SAFELY AS PER THE SAFETY REGULATIONS.
- WORKERS MUST PROTECT LINES FROM CHAFING AT ALL TIMES.
- PRO-BEL EQUIPMENT SHALL BE RE-CERTIFIED AT PERIODS NOT TO EXCEED 10 YEARS. THE RE-CERTIFICATION RECORD SHALL BE INCLUDED IN THE BUILDING LOOKBOOK. IF AN AREA OF SUSPICION IS IDENTIFIED, A TEST PROCEDURE, IF NECESSARY, SHALL BE PERFORMED UNDER THE DIRECTION OF PRO-BEL'S PROFESSIONAL ENGINEER.
- WORKER MUST BE TIED OFF FOR FALL ARREST PRIOR TO ITS APPROACHING AND REMAIN CONTINUOUSLY TIED OFF WHEN WORKING WITHIN (6'-0") OF ROOF EDGE WHERE PARAPET HEIGHT IS LESS THAN SAFETY RAILING HEIGHT (42" TALL). ENGINEERS SHALL ARRANGE THEIR LIFE LINES IN SUCH A WAY TO ENSURE THAT THEY CANNOT FALL MORE THAN (6'-0") VERTICAL FREE FALL, OR STRIKE LOWER ROOF LEVELS OR BUILDING WHEN PERFORMING NON-ROUTINE ROOF MAINTENANCE WORK.
- NON-STRUCTURAL PARAPET WALLS, RAILINGS AND ROOF EDGES SHALL BE RIGGED IN SUCH A MANNER TO AVOID DAMAGING THE BUILDING OR ENGINEERING THE HEALTH AND SAFETY OF THE WORKER AND/OR THE PUBLIC.
- PROTECT LINES FROM CHAFING AT ALL TIMES.
- IMPORTANT STRUCTURAL NOTE: ENGINEER OF RECORD FOR THE OVERALL PROJECT IS RESPONSIBLE FOR DESIGN OF THE BUILDING STRUCTURE, AND LOCAL REINFORCEMENT WHERE REQUIRED, TO WITHSTAND THE APPLIED LOADS OF THE SAFETY EQUIPMENT SUPPLIED BY PRO-BEL.
- SPECIAL INSPECTION NOTE: SPECIAL INSPECTION OF ALL CAST IN PLACE AND WELDED CONNECTION ARE RESPONSIBILITY OF OTHERS AND SHOULD BE CONSIDERED. DOCUMENTED EVIDENCE OF SUCH INSPECTION SHALL BE MADE AVAILABLE TO PRO-BEL.

HAZARD AREA NOTE:

ACCESS TO ANY AREA WITHIN 6'-0" OF ROOF EDGE WHERE THE PARAPET WALL/RILING IS LESS THAN 42" TALL IS RESTRICTED. WORKERS MUST BE TIED OFF TO AN ANCHOR OUTSIDE THESE AREAS PRIOR TO APPROACHING AND REMAIN CONTINUOUSLY TIED OFF WHEN WORKING WITHIN THESE AREAS.

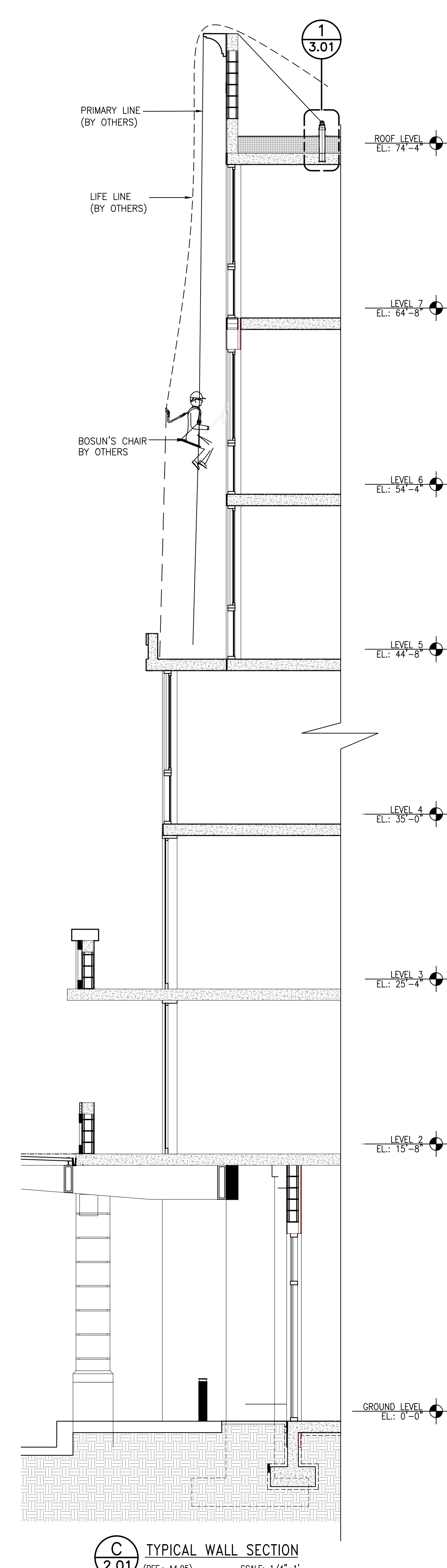
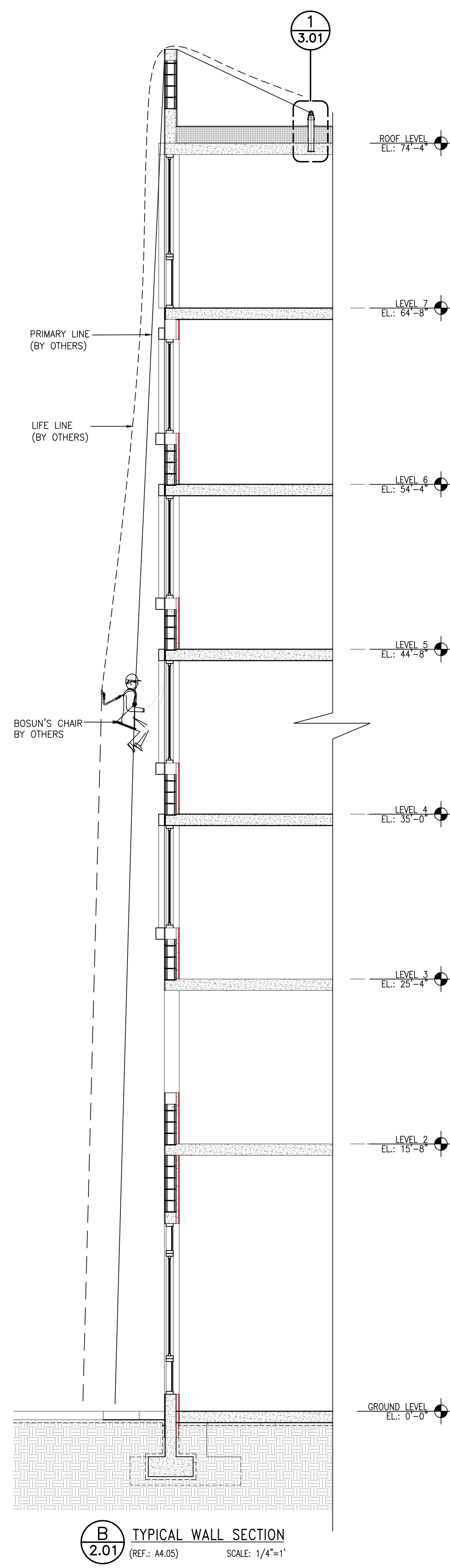
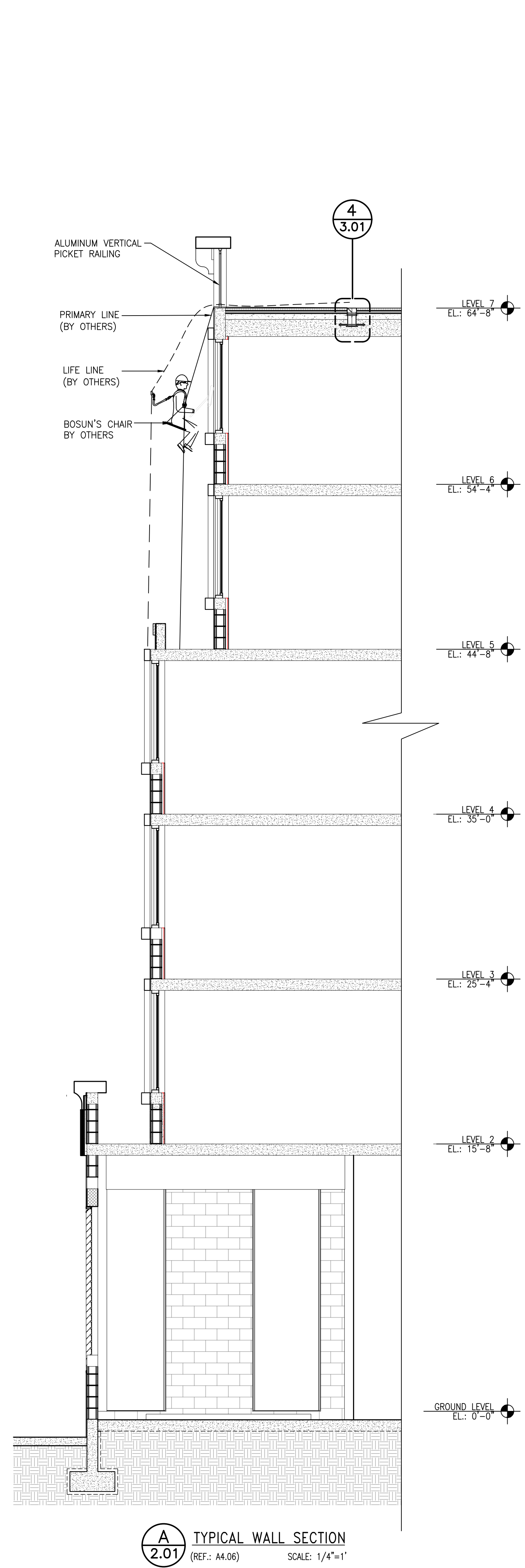
ACCESS TO EQUIPMENT NOTE:

SAFE ACCESS & EGRESS, SUCH AS DOORS, WINDOWS AND ROOF HATCHES TO BE PROVIDED BY OTHERS, IN ORDER TO USE, INSPECT AND CERTIFY EQUIPMENT.

NON-STRUCTURAL ROOFING NOTE:

NON-STRUCTURAL ROOFING NOTE: NON-STRUCTURAL PARAPET WALLS, RAILINGS AND ROOF EDGES SHALL BE RIGGED IN SUCH A MANNER TO AVOID DAMAGING THE BUILDING OR ENGINEERING THE HEALTH AND SAFETY OF THE WORKER AND/OR THE PUBLIC.

PRO-BEL - EQUIPMENT SCHEDULE AND BILL OF MATERIAL						
DETAIL NO./ SHEET NO.	SYMBOL	PRODUCT DESCRIPTION	MODEL NO./PART NO.	L7	ROOF (L8)	TOTAL QTY
1/3.01	Ⓚ	26" CAST IN FULLY EMBEDDED ROOF ANCHOR	FA-PBE74E80-2606	-	39	39
2/3.01	Ⓛ	15" CAST IN FULLY EMBEDDED ROOF ANCHOR	FA-PBE74E80-1506	-	20	20
3/3.01	Ⓜ	15" CAST IN PLACE HORIZONTAL RIGGING SLEEVE	CUSTOM-1	-	20	20
4/3.01	Ⓨ	INNER SLEEVE	FA-RSH3-533-042	-	2	2
5/3.01	Ⓩ	13" CAST IN RECESSED ROOF ANCHOR	CUSTOM-2	4	-	4
6/3.02	ⓐ	CAST IN RECESSED WALL ANCHOR	FA-PB685-15	5	-	5
7/3.02	ⓑ	8"-7" CAST IN CASE CURVED RIGGING SLEEVE	CUSTOM-3	-	10	10
		10"-4" CAST IN CASE CURVED RIGGING SLEEVE	CUSTOM-4	-	6	6



PARAPET WALLS, RAILINGS AND ROOF EDGES:
SHALL BE DESIGNED TO PERFORM UNDER THE APPLIED MAXIMUM FALL ARREST LOAD OF 1800 LBS OCCURRING HORIZONTALLY AND 1800 LBS VERTICALLY, SUCH THAT THE STRUCTURE IS NOT DAMAGED OR ENDANGERING THE HEALTH AND SAFETY OF THE WORKER AND/OR THE PUBLIC. THIS IS THE RESPONSIBILITY OF THE STRUCTURAL ENGINEER OF RECORD FOR THE OVERALL PROJECT.

NON-STRUCTURAL RIGGING NOTE:
NON-STRUCTURAL PARAPET WALLS, RAILINGS AND ROOF EDGES SHALL BE RIGGED IN SUCH A MANNER TO AVOID DAMAGING THE BUILDING OR ENDANGERING THE HEALTH AND SAFETY OF THE WORKER AND/OR THE PUBLIC.

PROTECT LINES FROM CHAFING AT ALL TIMES.

IMPORTANT NOTE:
WORKERS MUST USE A SHOCK ABSORBING LANYARD RATED FOR 500 LBS. MAXIMUM ARREST FORCE.

IMPORTANT STRUCTURAL NOTE:
ENGINEER OF RECORD FOR THE OVERALL PROJECT IS RESPONSIBLE FOR DESIGN OF THE BUILDING STRUCTURE, AND LOCAL REINFORCEMENT WHERE REQUIRED, TO WITHSTAND THE APPLIED LOADS OF THE SAFETY EQUIPMENT SUPPLIED BY PRO-BEL.

SPECIAL INSPECTION NOTE:
SPECIAL INSPECTION OF ALL CAST IN PLACE AND WELDED CONNECTION ARE RESPONSIBILITY OF OTHERS AND SHOULD BE CONSIDERED. DOCUMENTED EVIDENCE OF SUCH INSPECTION SHALL BE MADE AVAILABLE TO PRO-BEL.

FOR REVIEW

THE ENGINEER'S SEAL INDICATES ONLY THAT THE STRUCTURAL COMPONENTS SUPPLIED BY PRO-BEL.

3) WILL RESIST THE LOADS INDICATED ON THIS DRAWING WHEN ANALYZED BY CONVENTIONAL STRUCTURAL TECHNIQUES, OR

4) HAVE BEEN LAB TESTED FOR THE LOADS INDICATED.

THIS DRAWING IS ON LOAN ONLY AND THE EQUIPMENT IS CONSIDERED CERTIFIED PROVIDING ANNUAL INSPECTIONS ARE PERFORMED IN ACCORDANCE WITH PRO-BEL LOG BOOK REQUIREMENTS.

THE CONTRACTOR MUST VERIFY ALL DIMENSIONS. ANY DEVIATION FROM THIS DRAWING MUST BE REPORTED TO PRO-BEL ENTERPRISES LIMITED.

THIS DRAWING MUST NOT BE USED FOR CONSTRUCTION UNTIL IT IS APPROVED.

PRO-BEL USA INC.
735 WESTNEY ROAD SOUTH
AURIC, ONTARIO, CANADA L1S 6M1
Tel: (905) 427-0616, Fax: (905) 427-2545
Toll Free: 1 (800) 461-0275
Web: www.pro-bel.com
E-Mail: info@pro-bel.ca

CLIENT:
TRAMMEL CROW RESIDENTIAL

PROJECT:
**ALEXAN CRAFTS
330 CATALONIA AVENUE
CORAL GABLES, FL 33146**

PROJECT SCOPE: SUPPLY & INSTALL (SLEEVES ONLY) w/ SITE LOAD TESTING

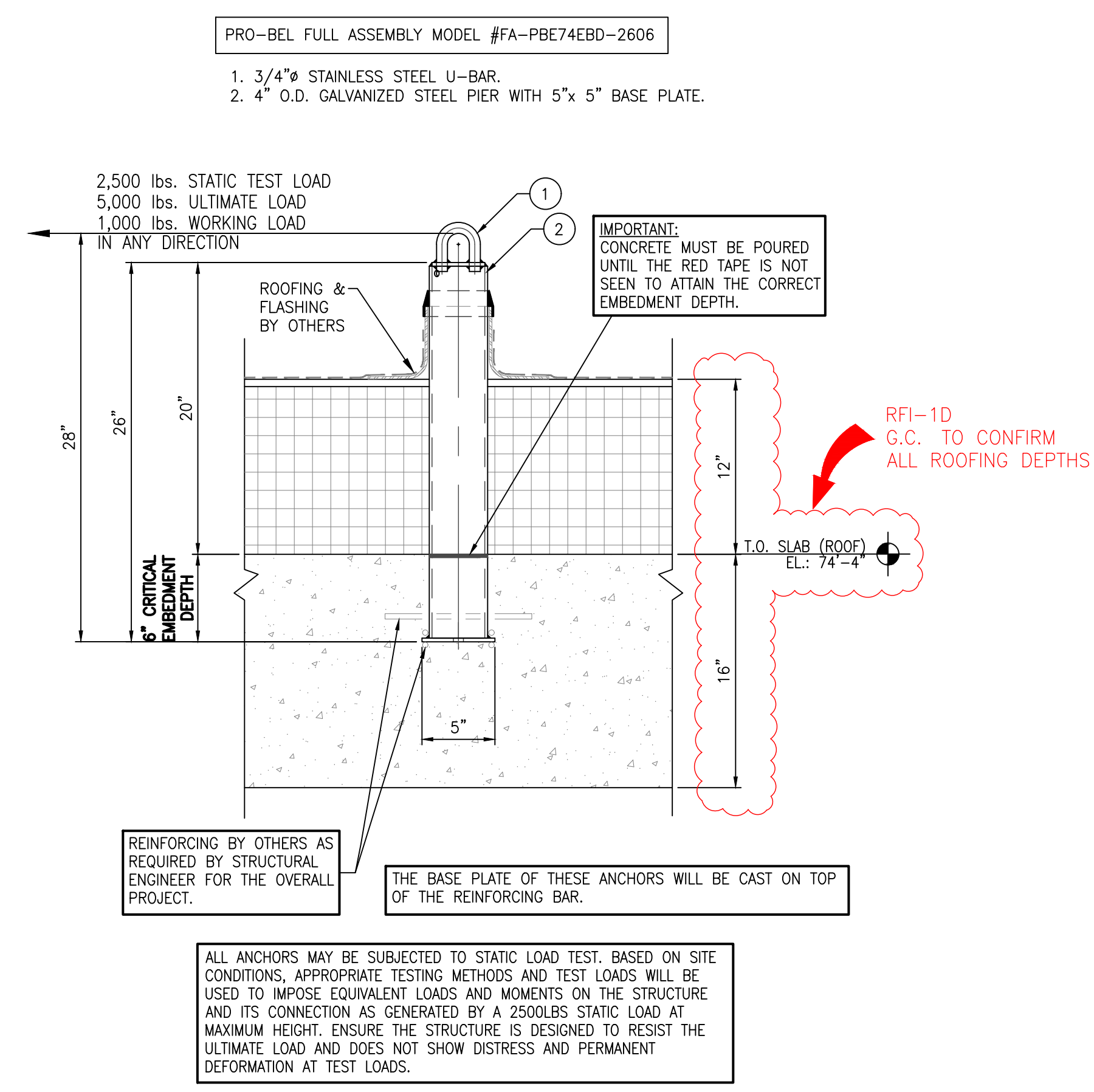
MM/DD/YYYY: 01/29/2023	TECH. REVIEW		
SCALE: AS INDICATED	SALES	PM	ENG/SIP
DRAWN BY: HSN	MC	CD	

TITLE:
WINDOW CLEANING SAFETY EQUIPMENT SECTIONS

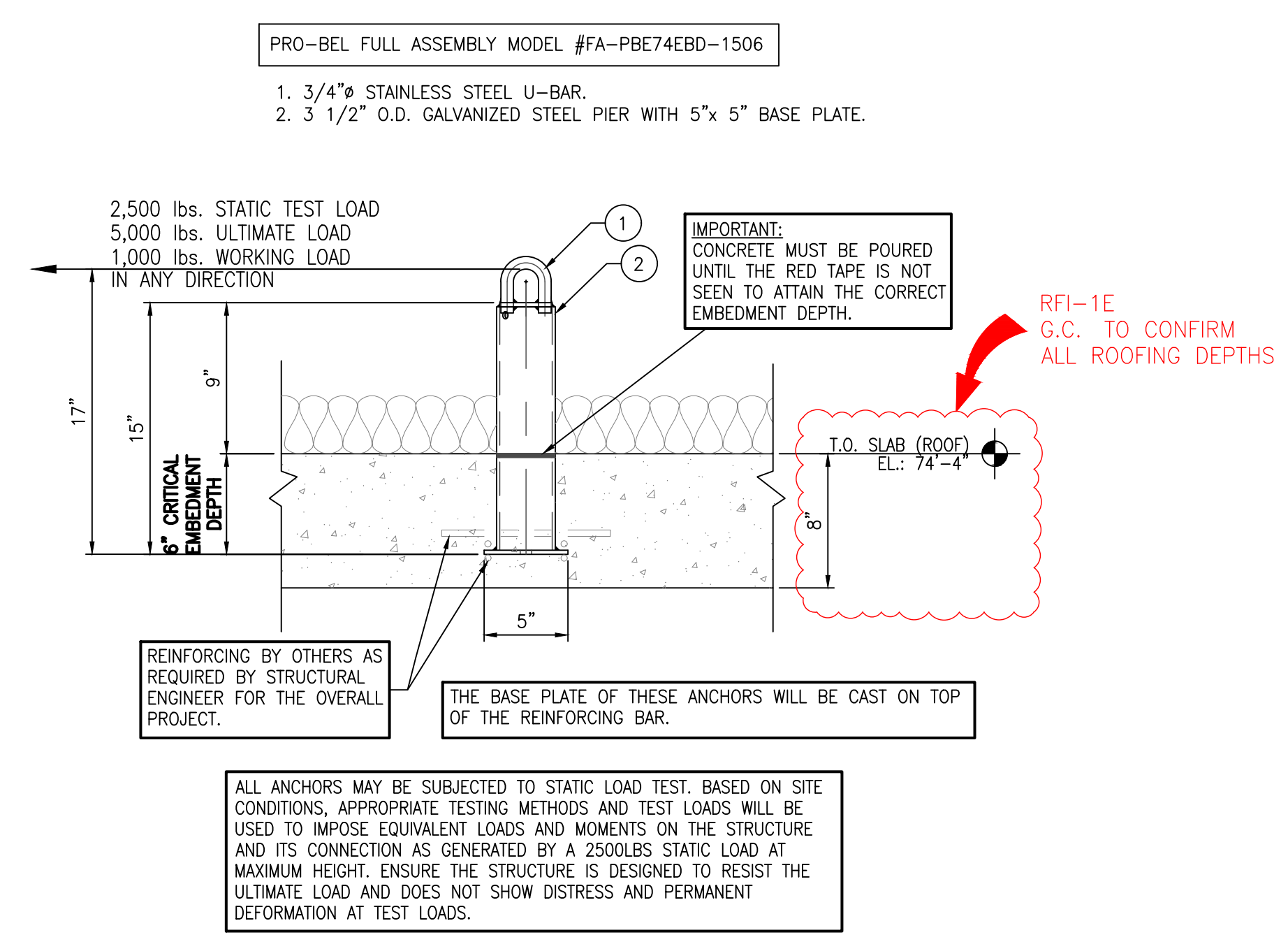
JOB NO. 6N1-2022-40151	SHEET NO. 2.01	REV. NO. 0
---------------------------	-------------------	---------------

NO.	REVISION	BY	CHKD	MM/DD/YYYY

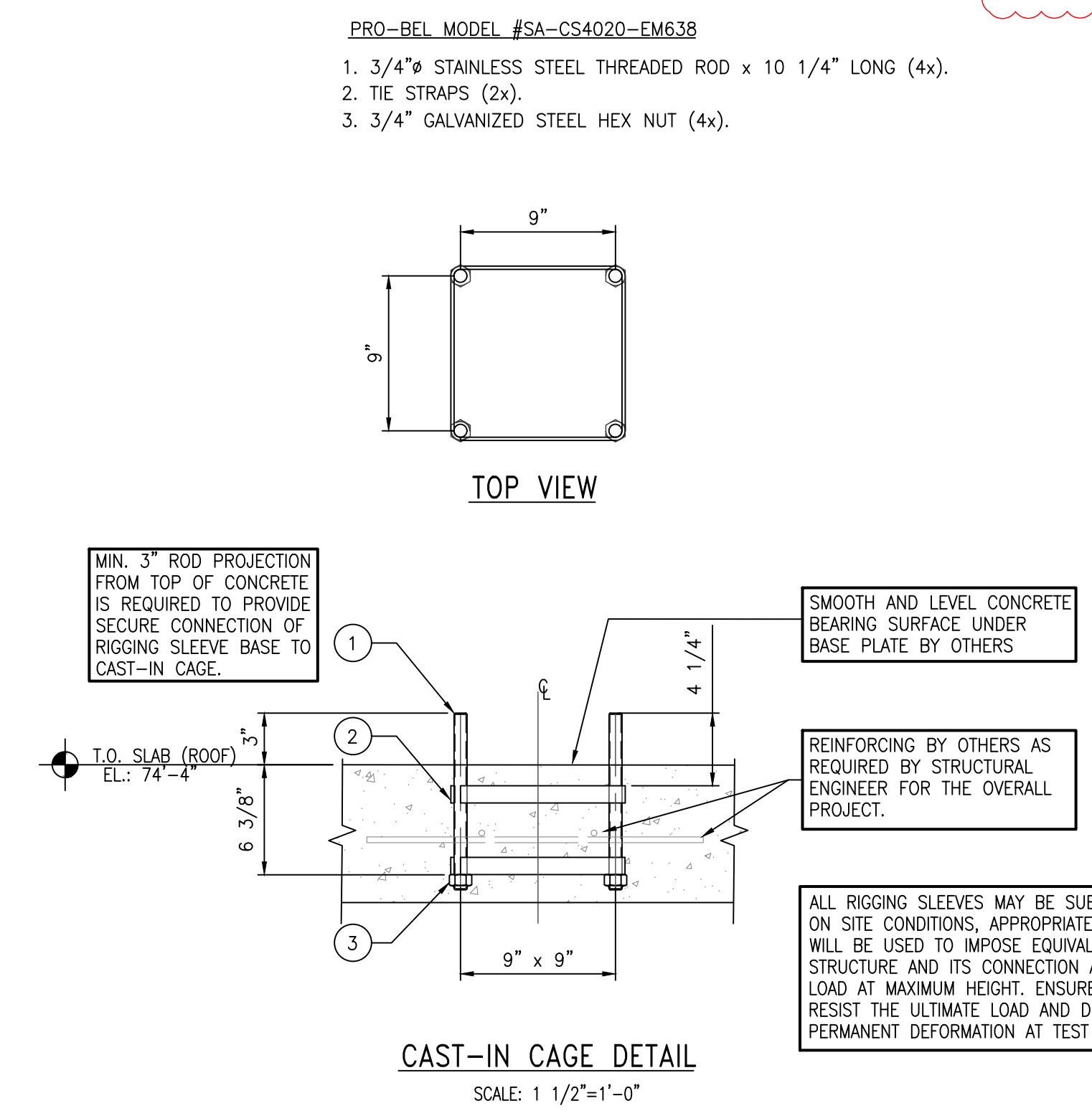
- FIXED SLEEVE FULL ASSEMBLY MODEL #CUSTOM-1
- PRO-BEL SUB-ASSEMBLY MODEL #SA-CS4020-EM638 REFER TO CAST IN CAGE DETAIL
- INNER SLEEVE FULL ASSEMBLY MODEL #FA-RSH3.553-042
- HINGED CAP.
 - 4" x 6" HSS FIXED SLEEVE w/ SUPPORT WELDED TO 12" x 13" BASE PLATE.
 - 3/4" - 10 UNC STAINLESS STEEL HEX NUT & LOCK WASHER, AND GALVANIZED PLATE WASHER.
- RIGGING SLEEVE HEAD w/ 3/4" STAINLESS STEEL ROUND BAR.
 - 4" x 4" HSS RIGGING SLEEVE INSERT



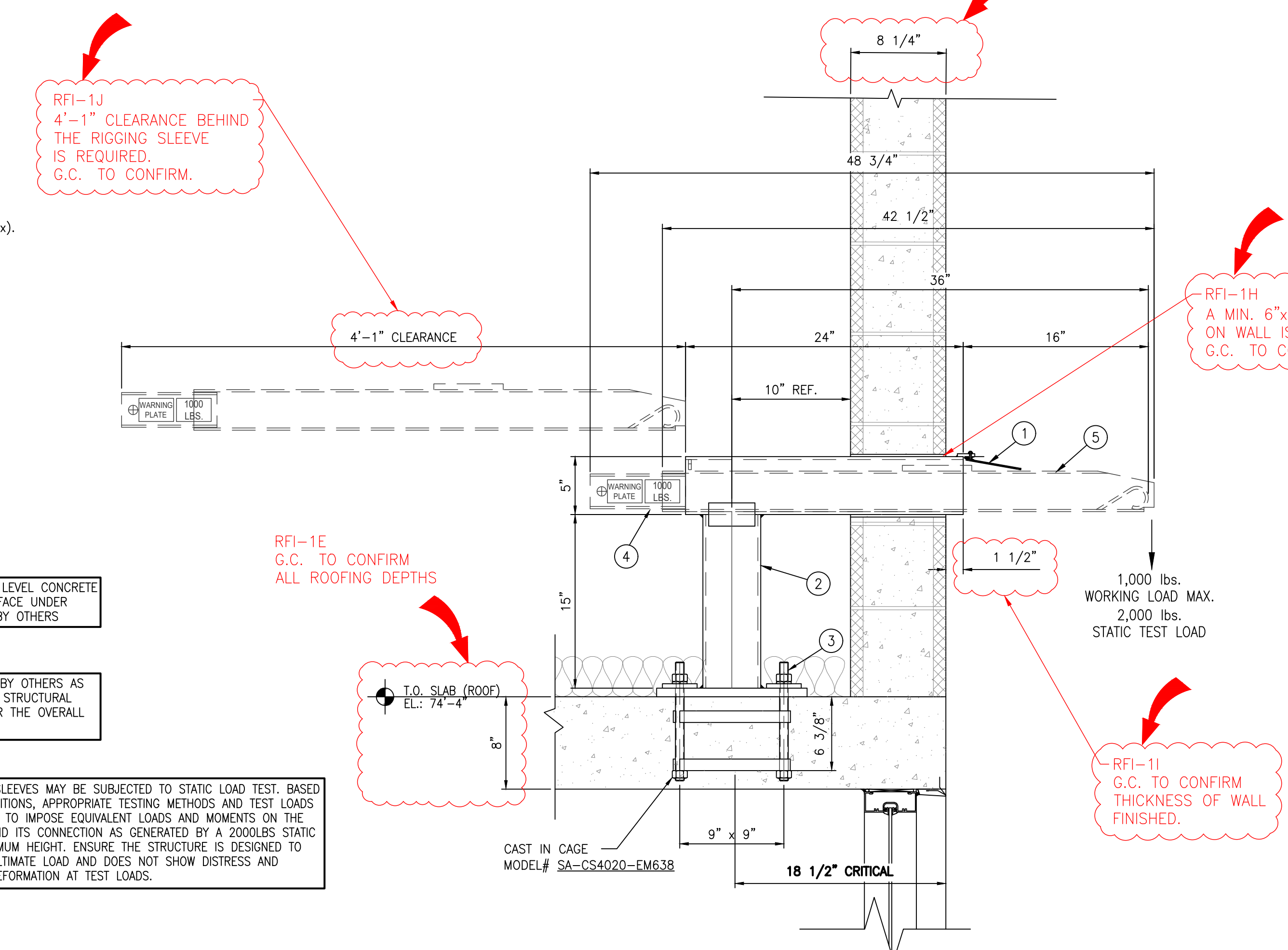
1 26" CAST IN FULLY EMBEDDED ROOF ANCHOR DETAIL
(REF.: 2/A-9.00A) SCALE: 1 1/2"=1'-0"



2 15" CAST IN FULLY EMBEDDED ROOF ANCHOR DETAIL
(REF.: 1/A-9.00A) SCALE: 1 1/2"=1'-0"



3 15" CAST IN PLACE HORIZONTAL RIGGING SLEEVE DETAIL
(REF.: 1-9.00A) SCALE: 1 1/2"=1'-0"

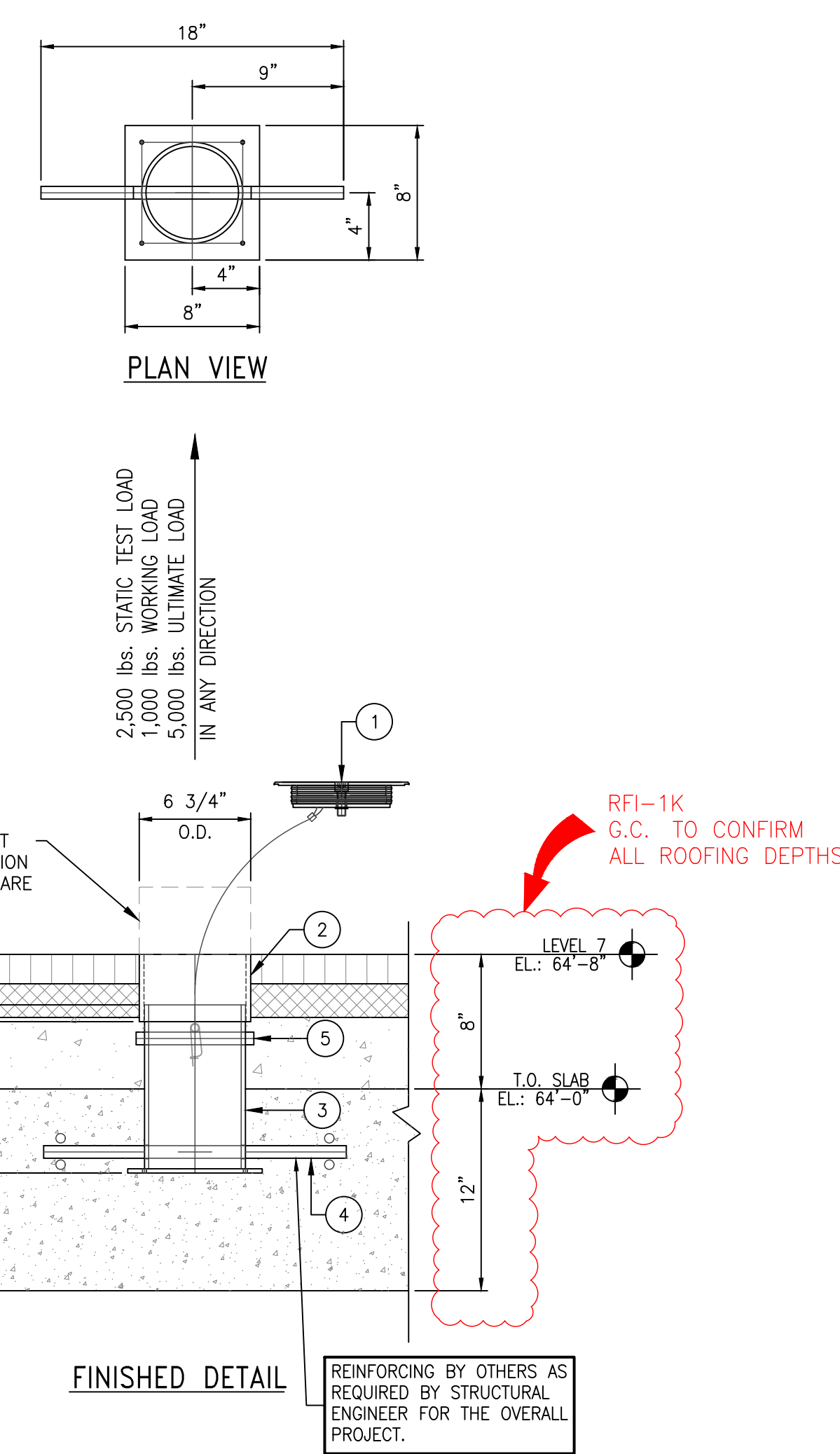


PRO-BEL FULL ASSEMBLY MODEL #CUSTOM-2

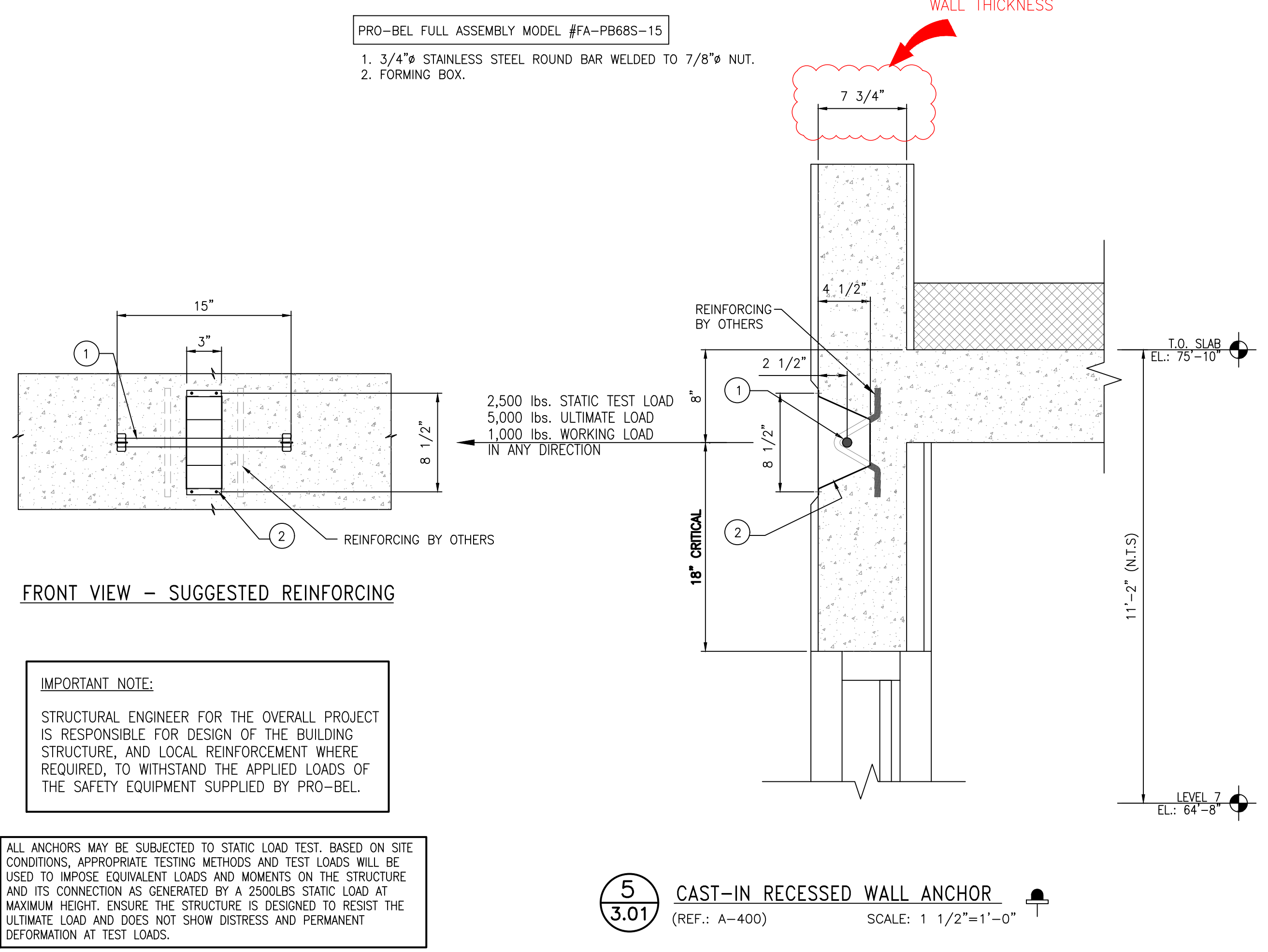
- CASTED ALUMINUM CAP w/ TETHER.
- PVC HOUSING
- STEEL HSS.
- 3/4" STAINLESS STEEL CASTING BAR.
- 3/4" STAINLESS STEEL ANCHOR BAR.
- STYROFOAM TEMPORARY CAP (REMOVE AFTER INSTALL).

PROCEDURE FOR CASTING (BY OTHERS) BALCONY ANCHOR

PRIOR TO CONCRETE POUR	POST CONCRETE POUR
1. ENSURE STYROFOAM TEMPORARY CAP (ITEM #6) IS IN PLACE PRIOR TO CONCRETE POUR.	1. REMOVE STYROFOAM TEMPORARY CAP (ITEM #6) ON BALCONY ANCHOR AFTER CONCRETE IS POURED.
2. ADJUST LEVELING RODS (ITEM #5) SUCH THAT THE EMBEDMENT DEPTH OF THE STEEL HSS (ITEM #3) IS 127mm [5"] BELOW THE TOP SURFACE OF FINISHED CONCRETE.	2. CUT THE PVC HOUSING (ITEM #2) SUCH THAT THE TOP SIDE OF THE HOUSING IS LEVEL WITH THE TOP OF FINISHED CONCRETE.
3. BIND THE CASTING BAR (ITEM #4) TO REINFORCING REBAR (BY OTHERS) TO ENSURE THERE IS NO MOVEMENT OF BALCONY ANCHOR WHILE POURING CONCRETE AND THAT THE BOTTOM OF THE STEEL HSS IS EMBEDDED 127mm [5"] INTO THE SLAB.	3. CONNECT TETHER ON THE ALUMINUM CAP (ITEM #1) TO THE TETHER CLIP ON ANCHOR BAR (ITEM #7) AND PLACE ALUMINUM CAP (ITEM #1) ONTO ANCHOR HOUSING (ITEM #2).



4 13" CAST IN RECESSED ROOF ANCHOR DETAIL
(REF.: M-06) SCALE: 1 1/2"=1'-0"



5 CAST-IN RECESSED WALL ANCHOR
(REF.: A-400) SCALE: 1 1/2"=1'-0"

FOR REVIEW

THE ENGINEER'S SEAL INDICATES ONLY THAT THE STRUCTURAL COMPONENTS SUPPLIED BY PRO-BEL:

- WILL RESIST THE LOADS INDICATED ON THIS DRAWING WHEN ANALYZED BY CONVENTIONAL STRUCTURAL TECHNIQUES, OR
- HAVE BEEN LAB TESTED FOR THE LOADS INDICATED.

THIS DRAWING IS ON LOAN ONLY AND THE EQUIPMENT IS CONSIDERED CERTIFIED PROVIDING ANNUAL INSPECTIONS ARE PERFORMED IN ACCORDANCE WITH PRO-BEL LOG BOOK REQUIREMENTS.

THE CONTRACTOR MUST VERIFY ALL DIMENSIONS.

ANY DEVIATION FROM THIS DRAWING MUST BE REPORTED TO PRO-BEL ENTERPRISES LIMITED.

THIS DRAWING MUST NOT BE USED FOR CONSTRUCTION UNTIL IT IS APPROVED.

PRO-BEL USA INC.
765 WESTNEY ROAD SOUTH
AUX. OFFICE, CANAL LIS BMT
Tel: (904) 427-0616, Fax: (904) 427-2545
Toll Free: 1 (800) 461-0575
Web: www.pro-bel.com
E-Mail: info@pro-bel.co

CLIENT: TRAMMEL CROW RESIDENTIAL

PROJECT: ALEXAN CRAFTS
330 CATALONIA AVENUE
CORAL GABLES, FL 33146

PROJECT SCOPE: SUPPLY & INSTALL (SLEEVES ONLY) w/ SITE LOAD TESTING

MM/DD/YYYY: 01/29/2023	TECH. REVIEW
SCALE: AS INDICATED	SALES
DRWN BY: HSN	MC
	CD
	ENG/SIP

TITLE: WINDOW CLEANING SAFETY EQUIPMENT DETAILS

JOB NO. 6N1-2022-40151

SHEET NO. 3.01

REV. NO. 0

IMPORTANT STRUCTURAL NOTE:
ENGINEER OF RECORD FOR THE OVERALL PROJECT IS RESPONSIBLE FOR DESIGN OF THE BUILDING STRUCTURE, AND LOCAL REINFORCEMENT WHERE REQUIRED, TO WITHSTAND THE APPLIED LOADS OF THE SAFETY EQUIPMENT SUPPLIED BY PRO-BEL.

SPECIAL INSPECTION NOTE:
SPECIAL INSPECTION OF ALL CAST IN PLACE AND WELDED CONNECTION ARE RESPONSIBILITY OF OTHERS AND SHOULD BE CONSIDERED. DOCUMENTED EVIDENCE OF SUCH INSPECTION SHALL BE MADE AVAILABLE TO PRO-BEL.

NO.	REVISION	BY	CHKD	MM/DD/YYYY

PRO-BEL FULL ASSEMBLY MODEL #CUSTOM-3
 PRO-BEL SUB-ASSEMBLY MODEL #SA-CS210-EM60
 REFER TO CAST IN CAGE DETAIL.

1. RIGGING SLEEVE HEAD w/ 3/4" STAINLESS STEEL ROUND BAR.
2. RIGGING SLEEVE END CAP.
3. 3 1/2" x 3 1/2" HSS RIGGING SLEEVE SUPPORT w/ 5" x 8" BASE PLATE.
4. 4" O.D. CURVED SLEEVE (TILTED, BENT @ 64°).
5. 5/8" - 11 UNC STAINLESS STEEL HEX NUT & LOCK WASHER, AND GALVANIZED PLATE WASHER.

RFI-1P
 RETENTION CONFLICT BETWEEN THE RIGGING SLEEVE AND THE KNEE WALL. G.C. TO CONFIRM.

RFI-1M
 SD OF TRUSS WILL BE REQUIRED TO ENSURE NO CONFLICT.

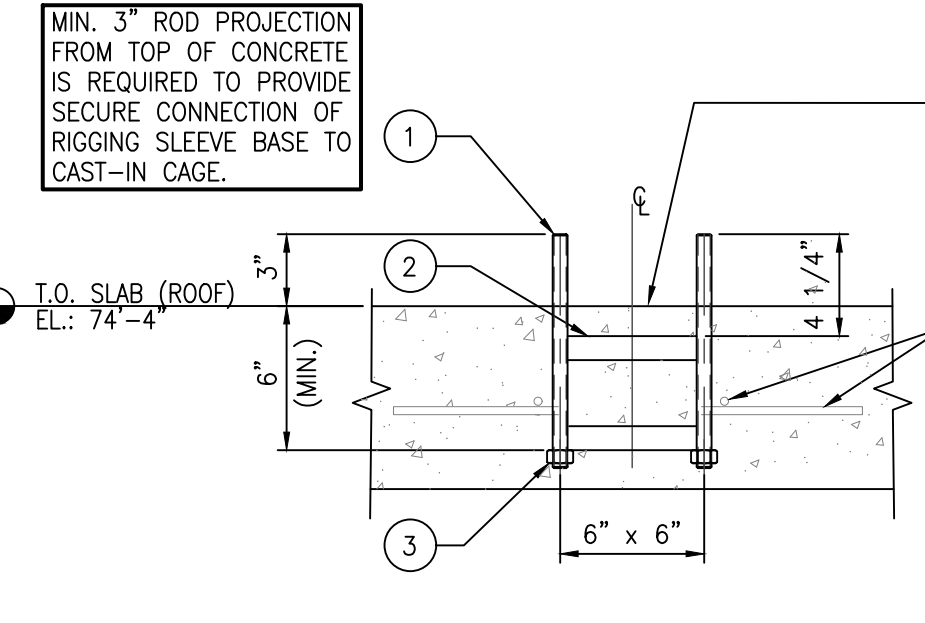
RFI-1N
 OPENING ON WALL IS REQUIRED FOR RIGGING SLEEVE INSTALL. G.C. TO CONFIRM.

RFI-1D
 G.C. TO CONFIRM ALL ROOFING DEPTHS

RFI-1O
 G.C. TO CONFIRM THE SPACING BETWEEN WALLS

- PRO-BEL SUB-ASSEMBLY MODEL #SA-CS210-EM60
1. 5/8" STAINLESS STEEL THREADED ROD x 9 3/4" LONG (2x).
 2. THE STRAPS (2x).
 3. 5/8" STAINLESS STEEL HEX NUT (2x).

TOP VIEW



6 8'-7" CAST IN CAGE CURVED RIGGING SLEEVE DETAIL
 (REF: 7/57.01) SCALE: 1 1/2"=1'-0"

PRO-BEL FULL ASSEMBLY MODEL #CUSTOM-4
 PRO-BEL SUB-ASSEMBLY MODEL #SA-CS210-EM60
 REFER TO CAST IN CAGE DETAIL.

1. RIGGING SLEEVE HEAD w/ 3/4" STAINLESS STEEL ROUND BAR.
2. RIGGING SLEEVE END CAP.
3. 3 1/2" x 3 1/2" HSS RIGGING SLEEVE SUPPORT w/ 5" x 8" BASE PLATE.
4. 4" O.D. CURVED SLEEVE (TILTED, BENT @ 64°).
5. 5/8" - 11 UNC STAINLESS STEEL HEX NUT & LOCK WASHER, AND GALVANIZED PLATE WASHER.

RFI-1T
 RETENTION CONFLICT BETWEEN THE RIGGING SLEEVE AND THE KNEE WALL. G.C. TO CONFIRM.

RFI-1M
 SD OF TRUSS WILL BE REQUIRED TO ENSURE NO CONFLICT.

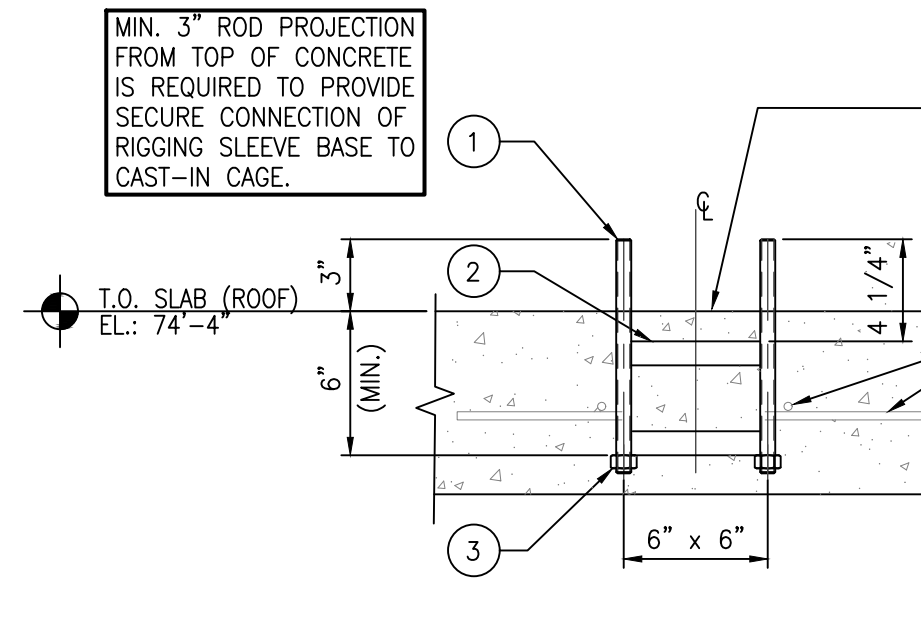
RFI-1Q
 OPENING ON WALL IS REQUIRED FOR RIGGING SLEEVE INSTALL. G.C. TO CONFIRM.

RFI-1D
 G.C. TO CONFIRM ALL ROOFING DEPTHS

RFI-1R
 G.C. TO CONFIRM THE SPACING BETWEEN WALLS

- PRO-BEL SUB-ASSEMBLY MODEL #SA-CS210-EM60
1. 5/8" STAINLESS STEEL THREADED ROD x 9 3/4" LONG (2x).
 2. THE STRAPS (2x).
 3. 5/8" STAINLESS STEEL HEX NUT (2x).

TOP VIEW



7 10'-4" CAST IN CAGE CURVED RIGGING SLEEVE DETAIL
 (REF: 7/57.01) SCALE: 1 1/2"=1'-0"

DETAIL FOR RIGGING SLEEVE #RS17~#RS22 ONLY

IMPORTANT STRUCTURAL NOTE:
 ENGINEER OF RECORD FOR THE OVERALL PROJECT IS RESPONSIBLE FOR DESIGN OF THE BUILDING STRUCTURE, AND LOCAL REINFORCEMENT WHERE REQUIRED, TO WITHSTAND THE APPLIED LOADS OF THE SAFETY EQUIPMENT SUPPLIED BY PRO-BEL.

SPECIAL INSPECTION NOTE:
 SPECIAL INSPECTION OF ALL CAST IN PLACE AND WELDED CONNECTION ARE RESPONSIBILITY OF OTHERS AND SHOULD BE CONSIDERED. DOCUMENTED EVIDENCE OF SUCH INSPECTION SHALL BE MADE AVAILABLE TO PRO-BEL.

FOR REVIEW

THE ENGINEER'S SEAL INDICATES ONLY THAT THE STRUCTURAL COMPONENTS SUPPLIED BY PRO-BEL:

- a) WILL RESIST THE LOADS INDICATED ON THIS DRAWING WHEN ANALYZED BY CONVENTIONAL STRUCTURAL TECHNIQUES, OR
- b) HAVE BEEN LAB TESTED FOR THE LOADS INDICATED.

THIS DRAWING IS ON LOAN ONLY AND THE EQUIPMENT IS CONSIDERED CERTIFIED PROVIDING ANNUAL INSPECTIONS ARE PERFORMED IN ACCORDANCE WITH PRO-BEL LOG BOOK REQUIREMENTS.

THE CONTRACTOR MUST VERIFY ALL DIMENSIONS. ANY DEVIATION FROM THIS DRAWING MUST BE REPORTED TO PRO-BEL ENTERPRISES LIMITED.

THIS DRAWING MUST NOT BE USED FOR CONSTRUCTION UNTIL IT IS APPROVED.

PRO-BEL USA INC.
 765 WESTERN ROAD SOUTH
 AURORA, ONTARIO L1S 6M1
 Tel: (905) 427-0616, Fax: (905) 427-2545
 Toll Free: 1 (800) 461-0575
 Web: www.pro-bel.com
 E-Mail: info@pro-bel.ca

CLIENT:
 TRAMMEL CROW RESIDENTIAL
 PROJECT:
 ALEXAN CRAFTS
 330 CATALONIA AVENUE
 CORAL GABLES, FL 33146

PROJECT SCOPE: SUPPLY & INSTALL (SLEEVES ONLY) w/ SITE LOAD TESTING
 MW/DD/YYYY: 01/29/2023
 SCALE: AS INDICATED
 DRAWN BY: HSN

TITLE:
 WINDOW CLEANING SAFETY EQUIPMENT DETAILS
 SHEET NO. 3.02
 REV. NO. 0

NO.	REVISION	BY	CHKD	MW/DD/YYYY